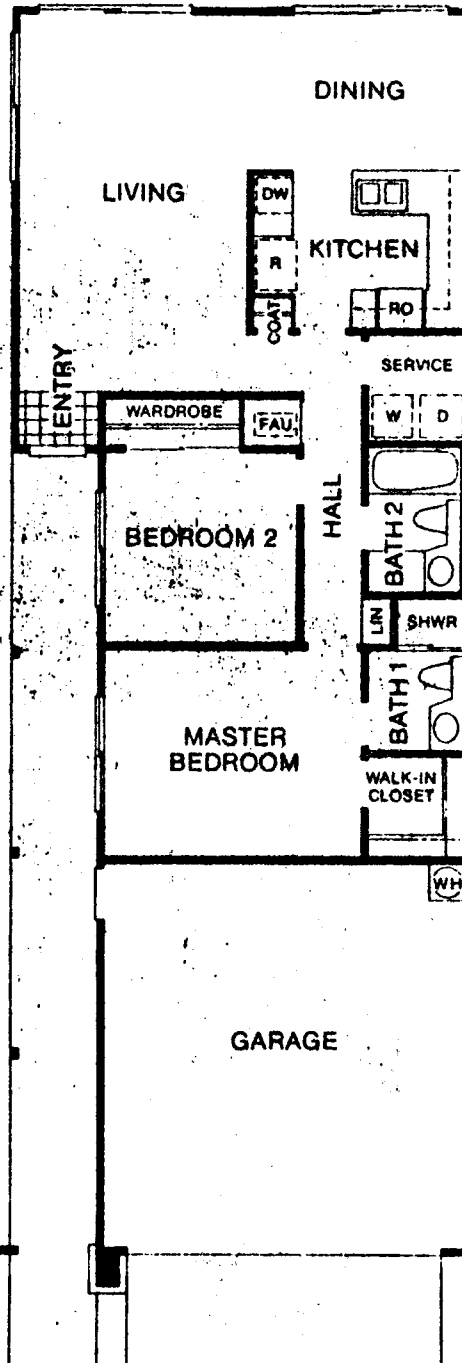
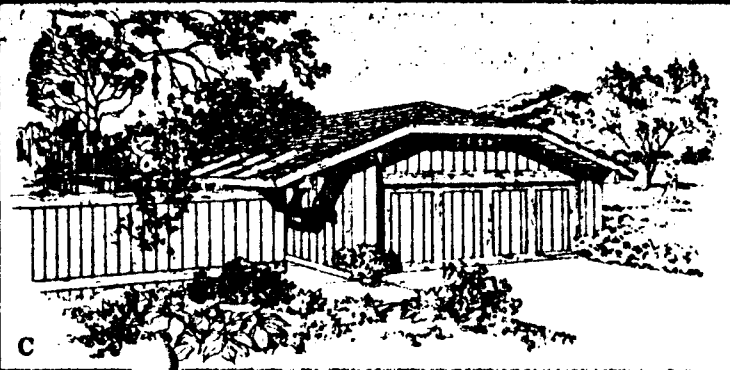
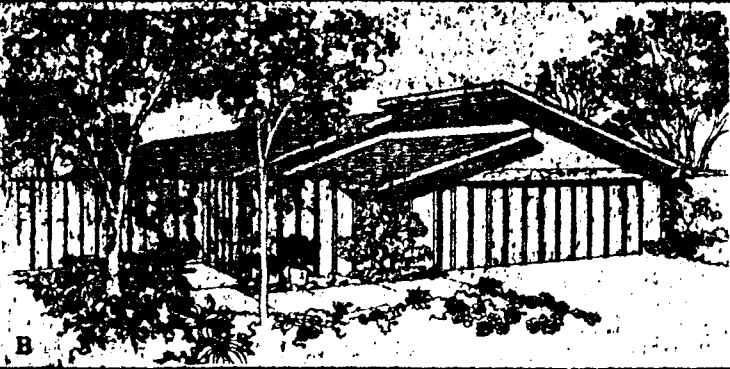
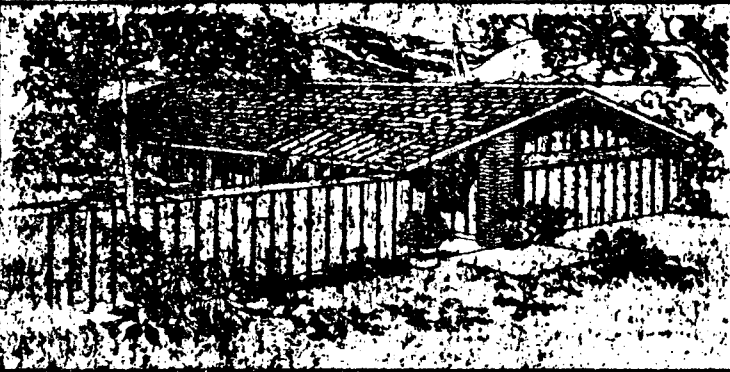




Plan 1 AQUARIUS Deco

Two bedrooms, two baths, walk-in closet,
indoor service area.

The entire rainbow belongs to the Aquarian, although
the predominant color is electric blue. This reflects their
warm personality. Water bearers are honest, probing and
popular, which can be felt in the wide open arrangement
of their homes.



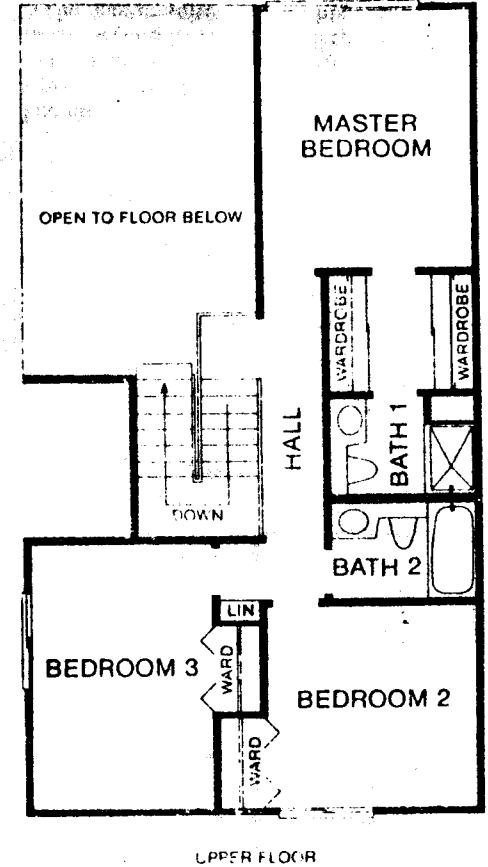
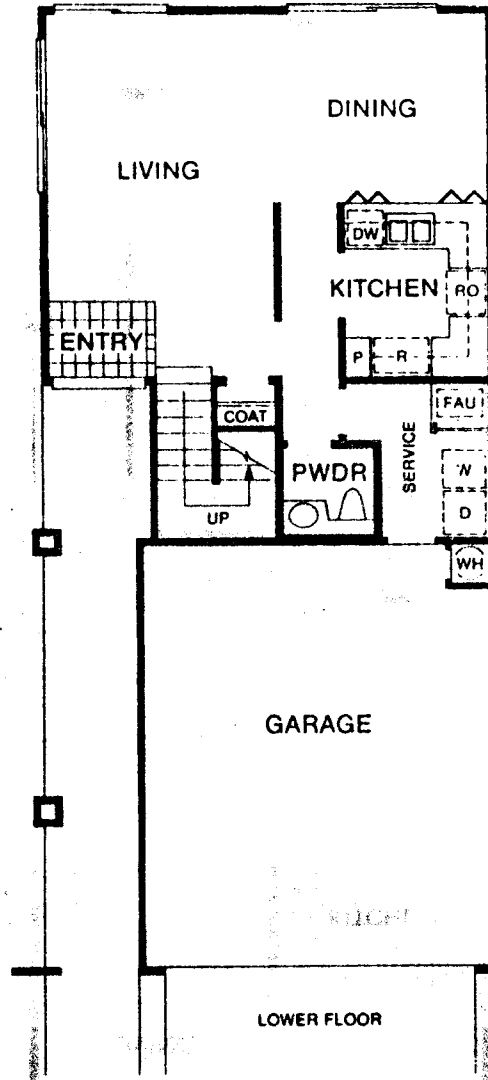
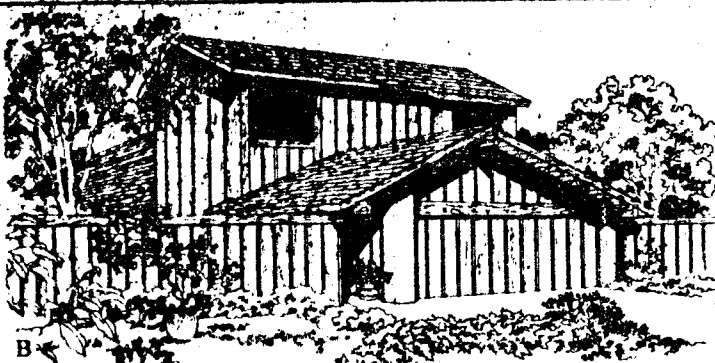
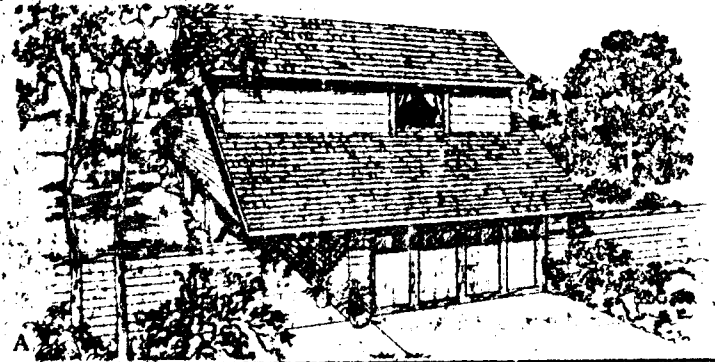
The living and dining areas are oriented to
take full advantage of the views. This plan
is ideal for smaller families, who like the
feel of a large home without the worry of
caring for it. The indoor-outdoor design adds
hundreds of square feet to this plan, which is
accentuated by the huge glass doors and
windows in nearly every room.



Plan 2 SCORPIO Decor

Two story three bedrooms two and one-half baths, two story living room, walk-in wardrobe.

Scorpios are passionate, perceptive people, which can be seen in the deep red color throughout their homes. Scorpios will surround themselves with luxury, such as rich, heavy furnishings and accessories.



An elegant plan which completely separates the sleeping and living areas. On the lower level, the "entertaining" kitchen is easily accessible to the living and dining area while the large master bedroom, and other bedrooms are away from it all upstairs. Of course, the outdoors is part of your home here, too, with the use of sliding glass doors in the living and dining areas. A door connects the garage with the indoor service area.

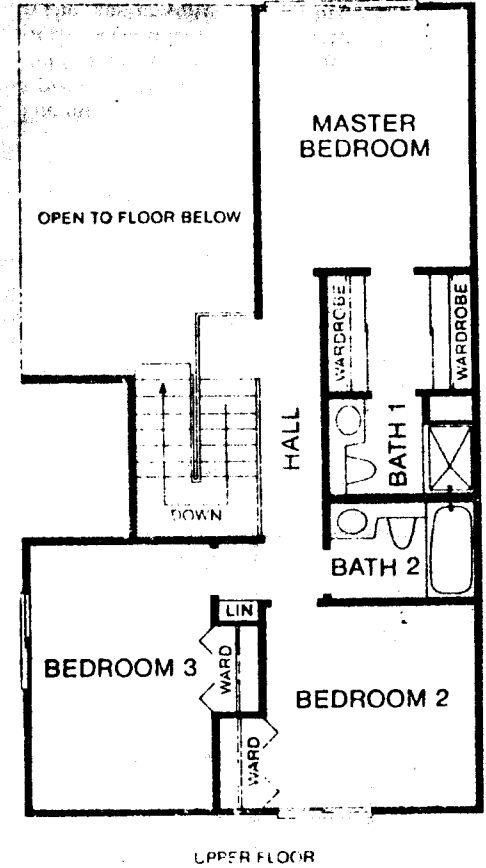
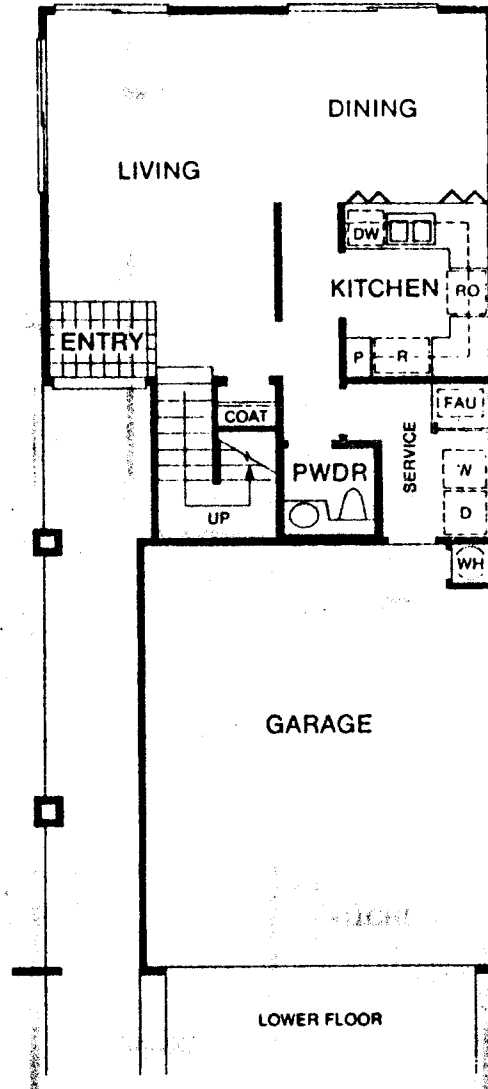
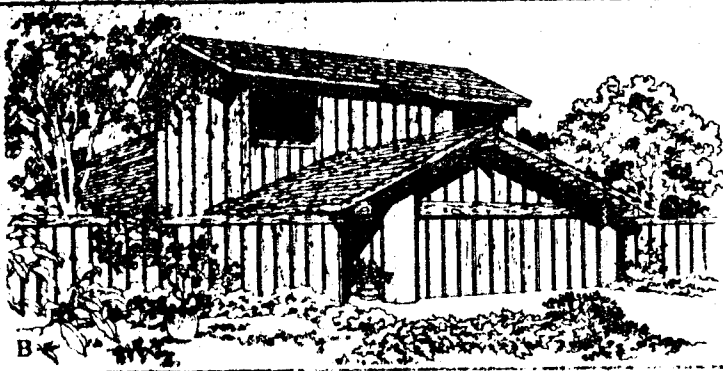
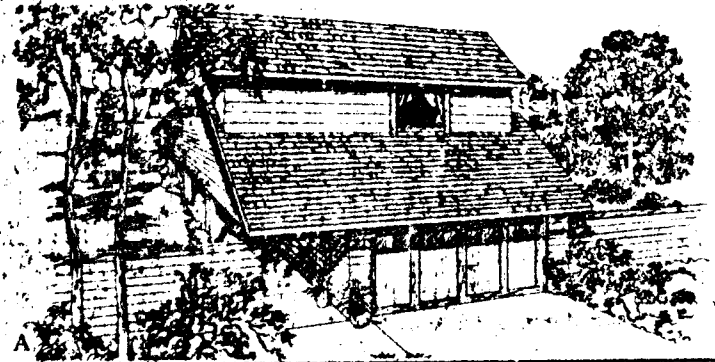
48 AG



Plan 2 SCORPIO Decor

Two story three bedrooms two and one-half baths, two story living room, walk-in wardrobe.

Scorpios are passionate, perceptive people, which can be seen in the deep red color throughout their homes. Scorpios will surround themselves with luxury, such as rich, heavy furnishings and accessories.



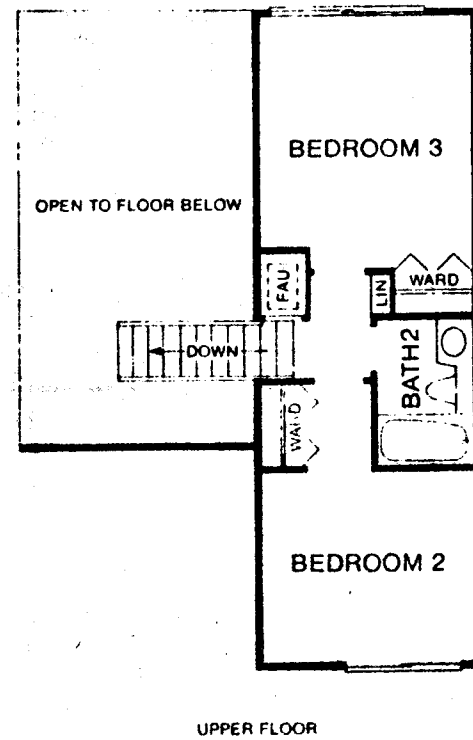
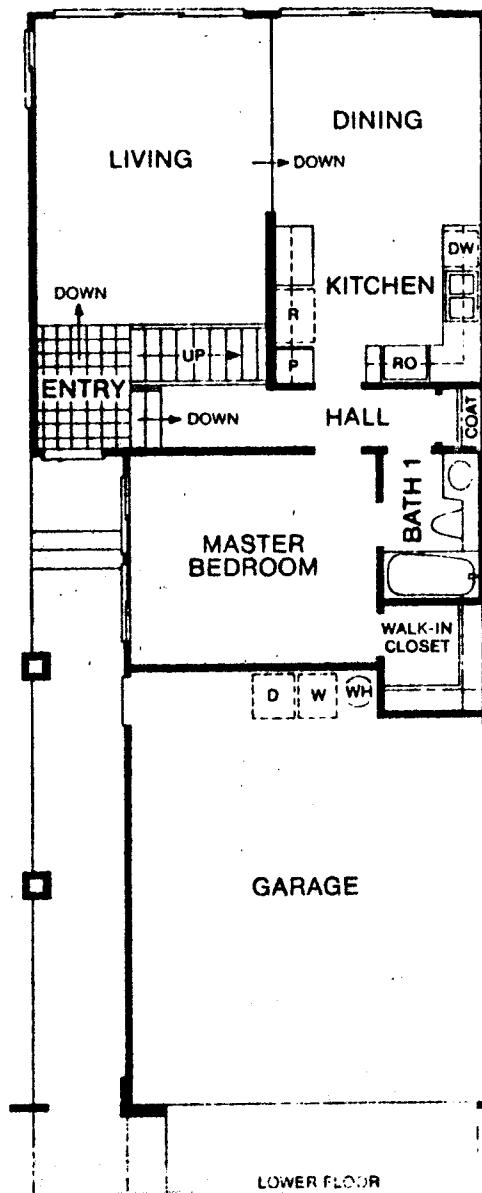
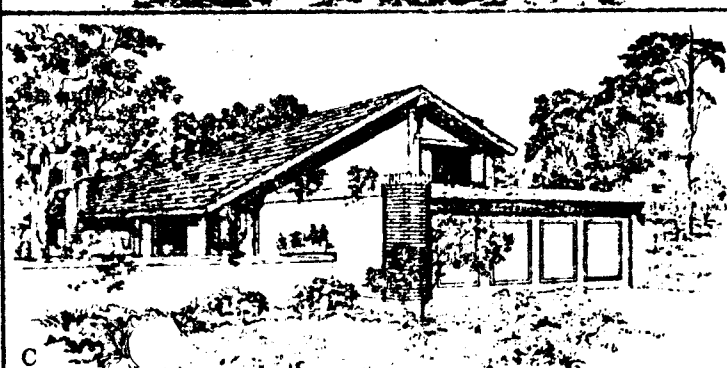
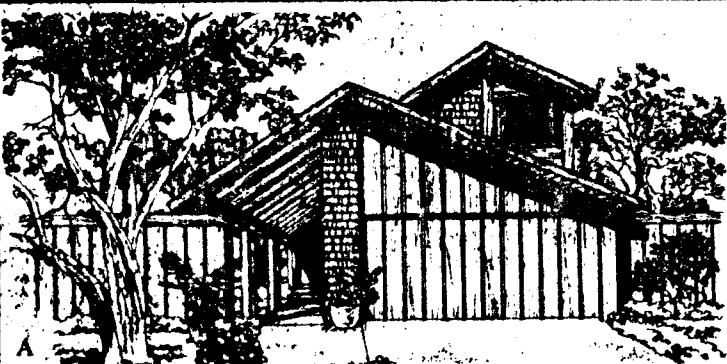
An elegant plan which completely separates the sleeping and living areas. On the lower level, the "entertaining" kitchen is easily accessible to the living and dining area while the large master bedroom, and other bedrooms are away from it all upstairs. Of course, the outdoors is part of your home here, too, with the use of sliding glass doors in the living and dining areas. A door connects the garage with the indoor service area.



Plan 3 LIBRA Decor

Two story, three bedrooms, two baths,
raised entry step-down dining room.

Librans are lovers of art, which can be seen by the soft blue and pastel shades of colors throughout their environment. Other dominant colors come from the golden leaves of autumn on one side of their scale with the sky blue violets from the spring rains on the other half.



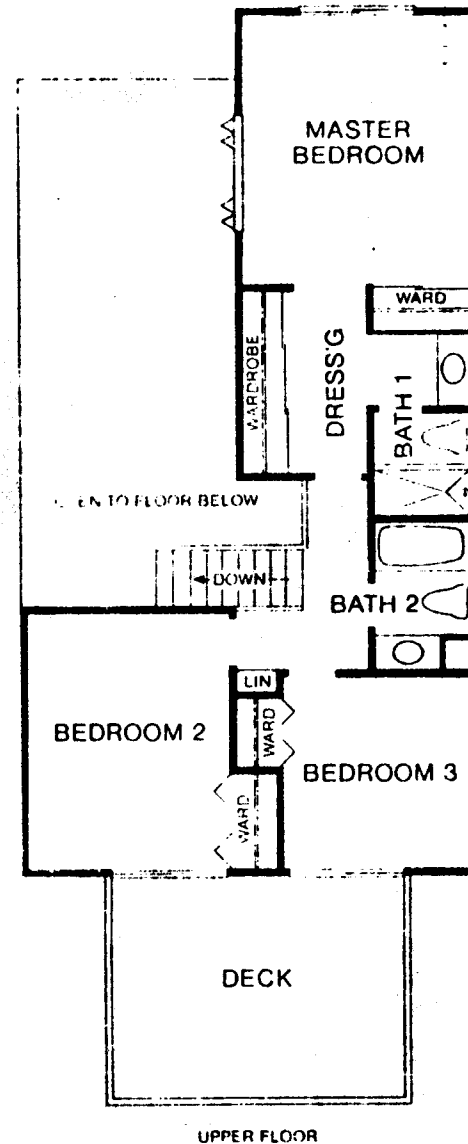
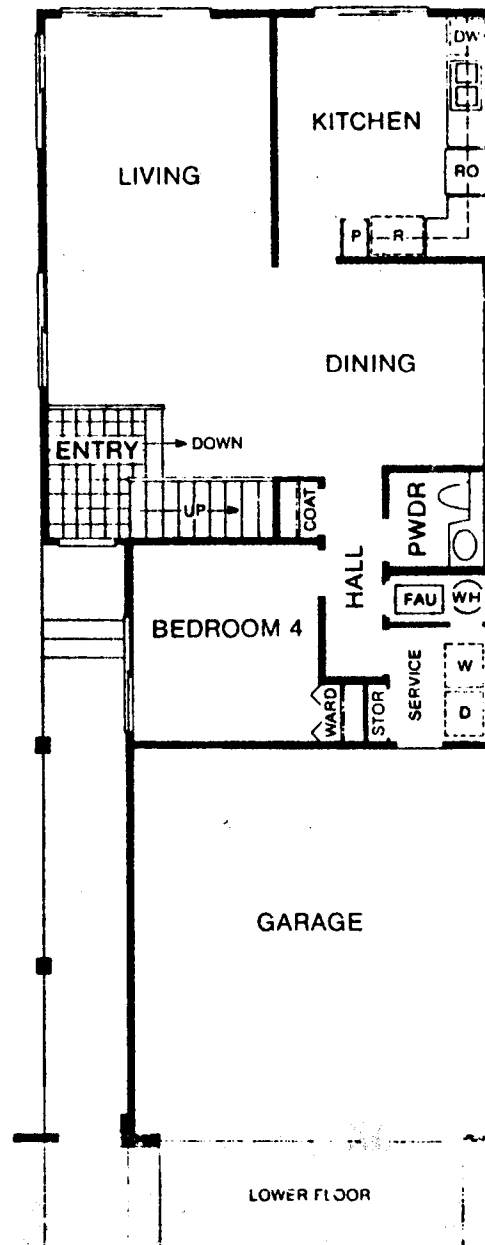
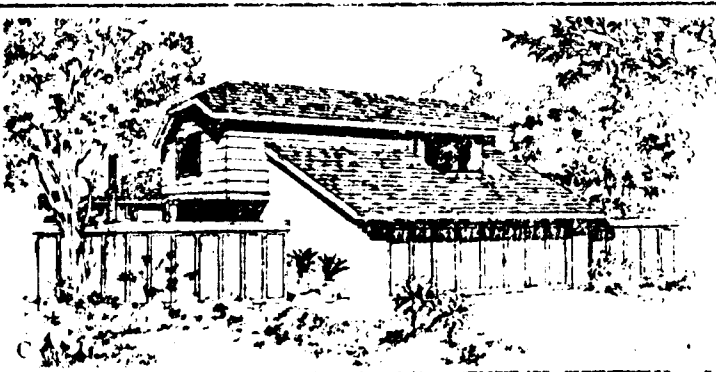
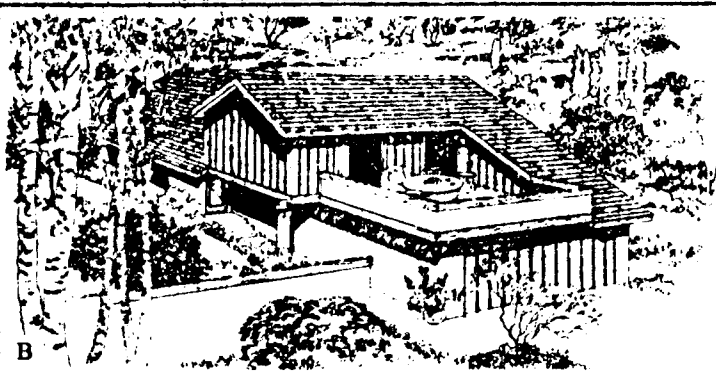
The master bedroom on the lower level means a private retreat for parents, while the children are tucked away in their own area on the second level. Large picture windows in the master suite enlarge this plan, and the outdoors is made part of your living and dining areas with the sliding doors. The step-down dining room enhances the feeling of luxury made evident by the two story living room.



Plan 4 LEO Decor

Two story, four bedrooms, two and one half baths, master suite with boudoir.

A royal feeling is the one conveyed by the furnishings in a Leo's home. The lion is a warm person, who makes visitors to his home feel like a king or a queen. The predominant yellow sun colors have a tendency to deepen to orange in the glow of the sunset.

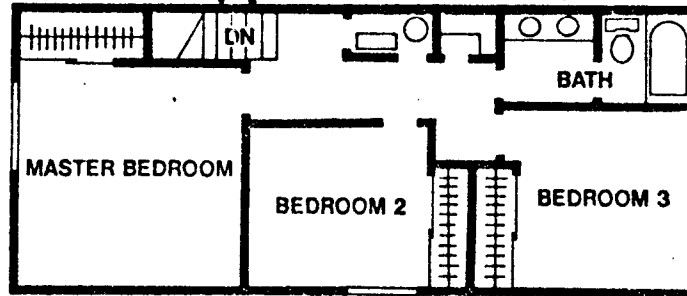


The elegant master suite is extended, giving you more space for a sitting room. There is also a dressing area off of the private master bath. The fourth bedroom is easily converted into a downstairs den, while all of the other bedrooms are upstairs away from the busy living areas. Of course, they connect the garage with the outdoors.

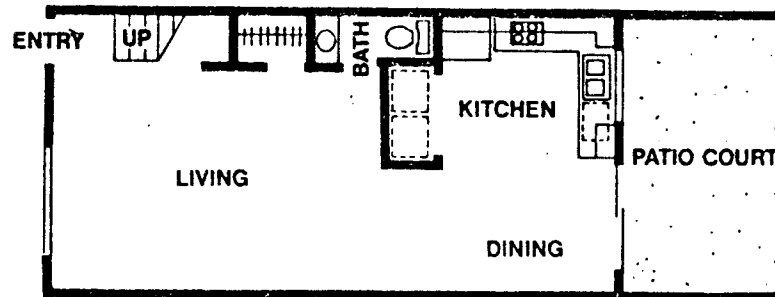
49AG

The Town Home 3
Two-story Studio—3 Bedrooms—1½ Baths—1-car Garage

approx. 1,154 sq. ft.



Second Story

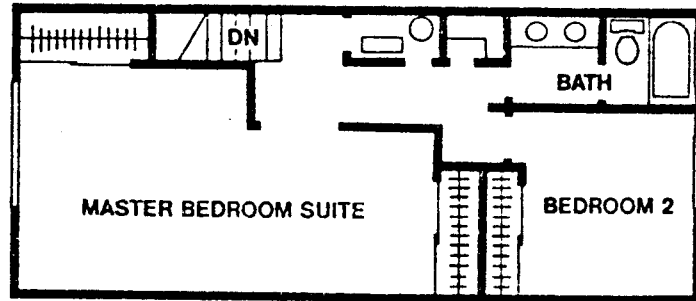


First Story

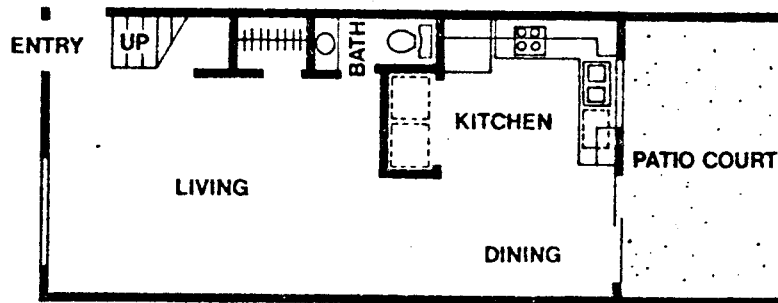
Town Home 2 - approx. 1054 sq. ft.

The Town Home 2 DELUXE

Two-story Studio—2 Bedrooms—1½ Baths—1-car Garage



Second Story

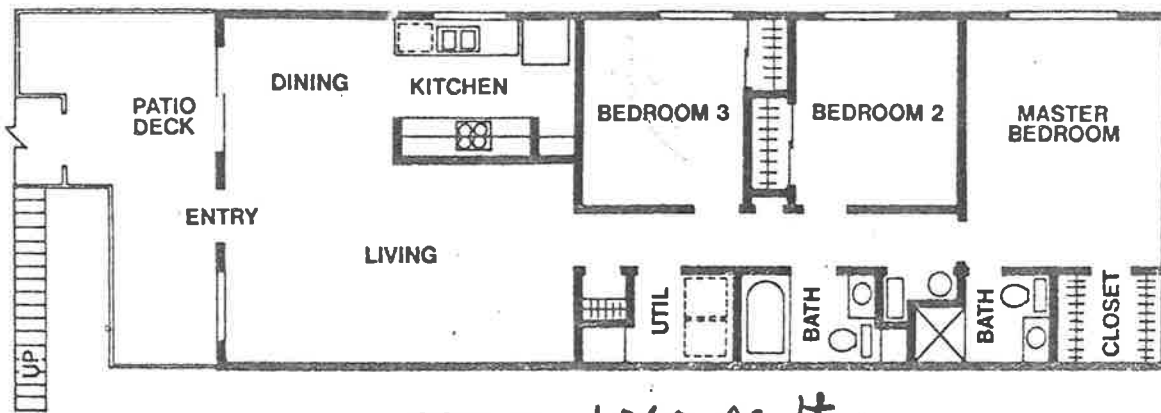


First Story

approx. 1,154 sq. ft.

The Penthouse

One-story—3 Bedrooms—2 Baths—2-car Garage



approx. 1,060 sq. ft.