

# The Bahama

4 bedrooms, 3 baths, family room and service room.

Functional built-in wet bar. Beautiful atrium. Distinctive select walnut grain kitchen cabinets. Elegant master bedroom suite with spectacular view of lake. Large walk-in closet. Home prepared for air conditioning. Decorative floor tile. Luxurious wall-to-wall carpeting. Floor to ceiling decorative ceramic tile in bathrooms. General Electric dishwasher, oven and range.

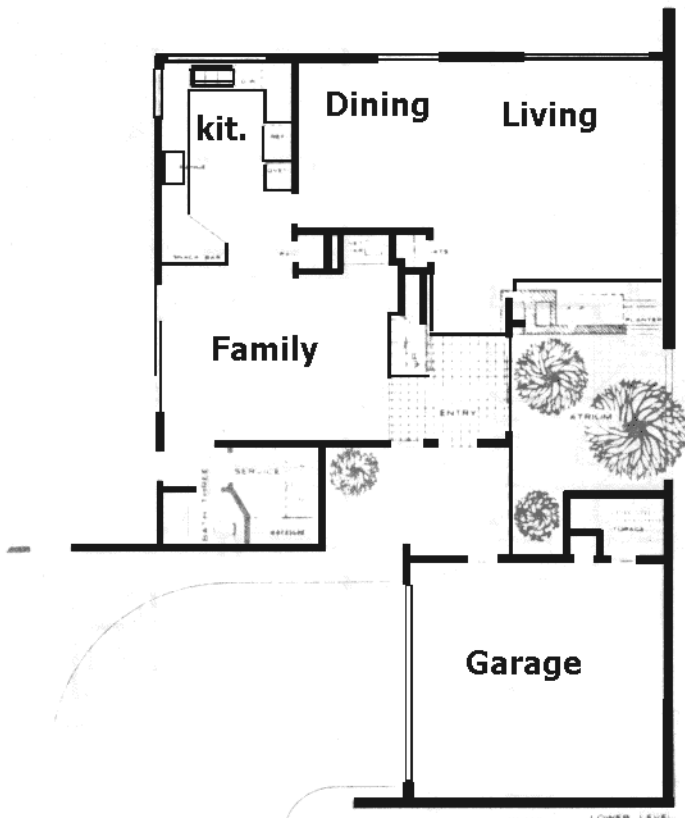
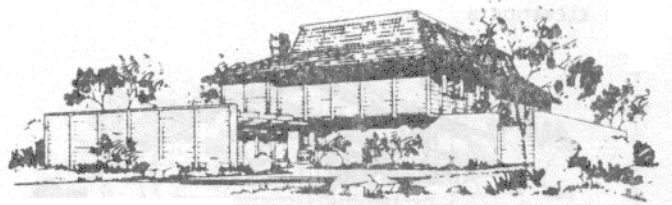
ELEVATION 1



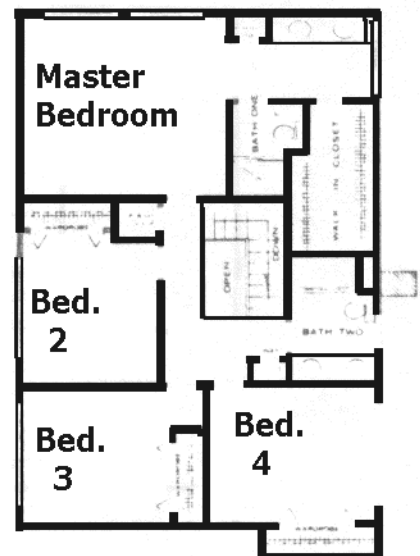
ELEVATION 2



ELEVATION 3



lower floor



upper floor

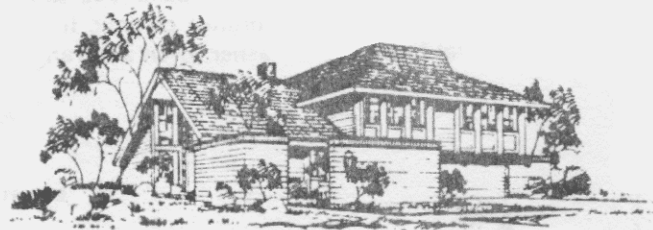


# The Buccaneer

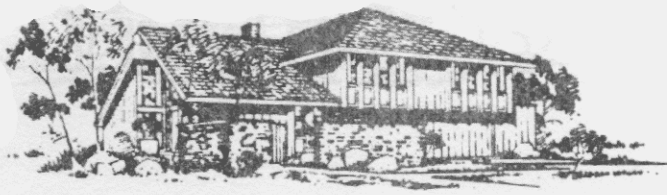
4 bedrooms, or 3 bedrooms and den, 3 baths, and separate dining area.

Spacious family room. Dramatic master bedroom suite with spectacular view of lake and adjoining spacious sitting room with fireplace. Home prepared for air conditioning. Decorative floor tile. Convenient serving counter bar from kitchen to patio. Distinctive select walnut kitchen cabinets. Luxurious wall-to-wall carpeting. Floor to ceiling decorative ceramic tile in bathrooms. General Electric dishwasher, oven and range.

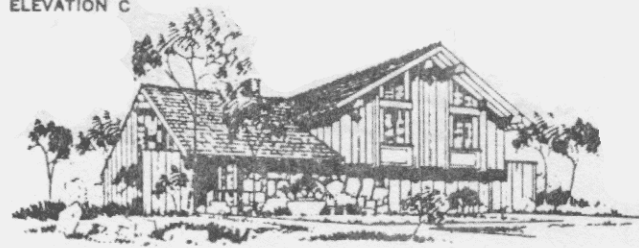
ELEVATION A



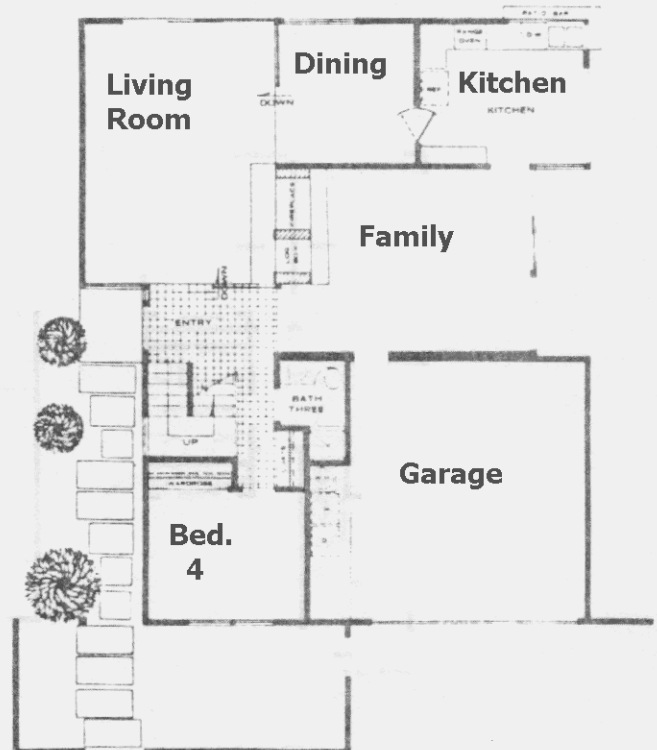
ELEVATION B



ELEVATION C



upper level



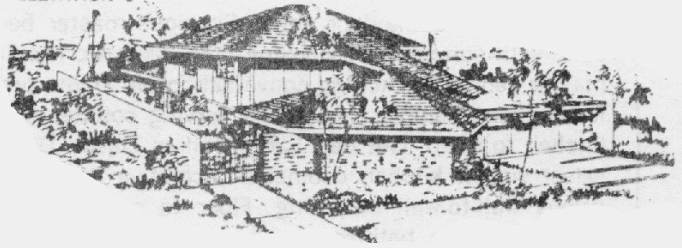
lower level

# The Caribbean

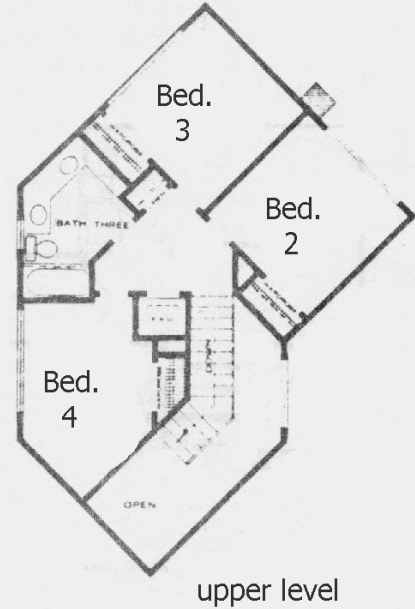
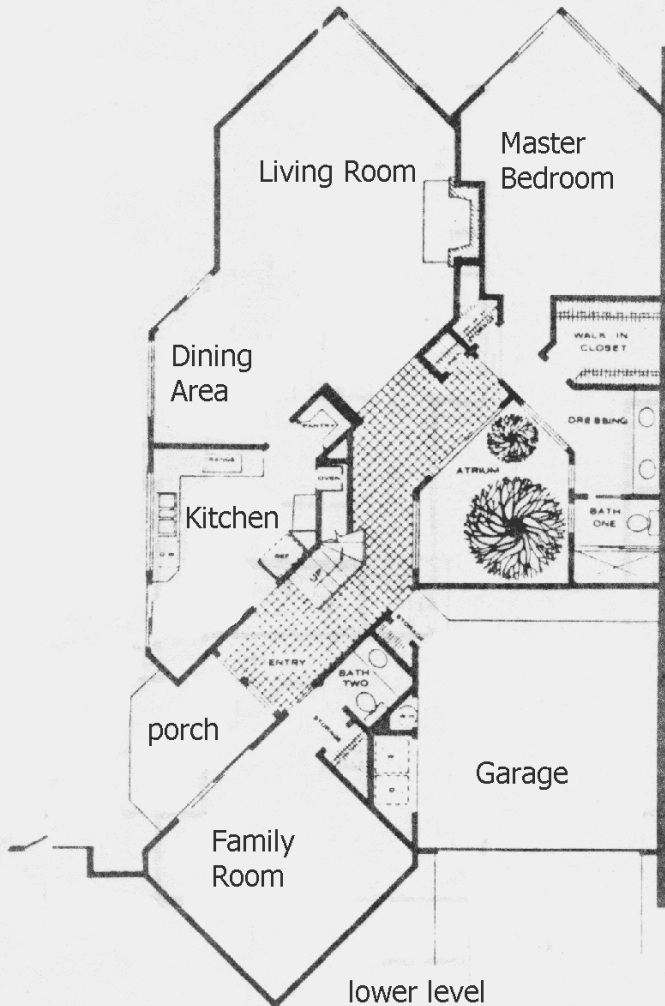
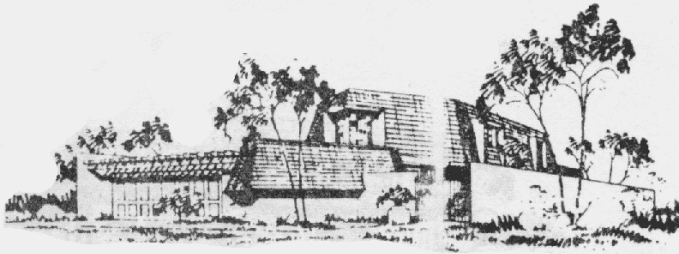
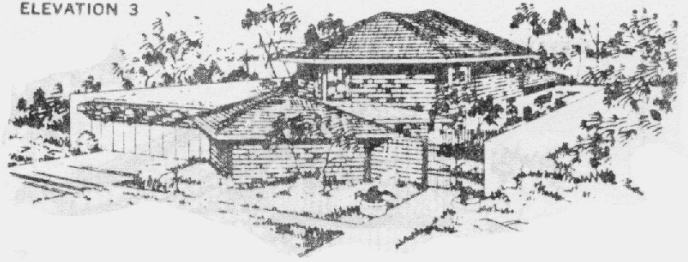
4 bedrooms, 3 baths, and separate family room.

Classic atrium entry. Distinctive select walnut kitchen cabinets. Easy to reach spacious pantry, closet. Huge walk-in closet. Decorative floor tile. Luxurious wall-to-wall carpeting. Home designed for maximum unimpeded view of lake. Floor to ceiling decorative ceramic tile in bathrooms. Home prepared for air conditioning. 3 compartment kitchen sink. General Electric dishwasher, oven and range.

ELEVATION 1

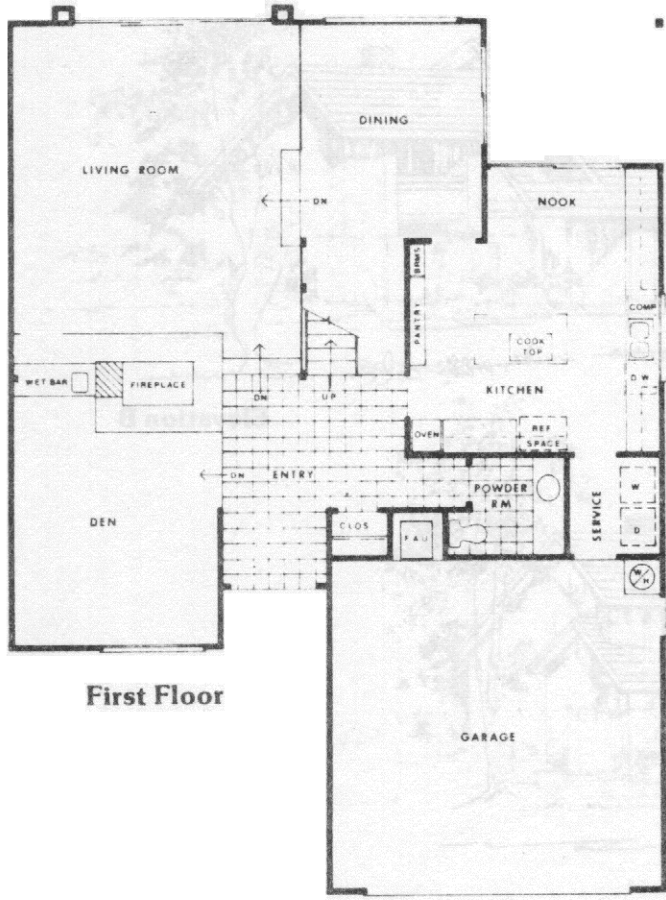


ELEVATION 3

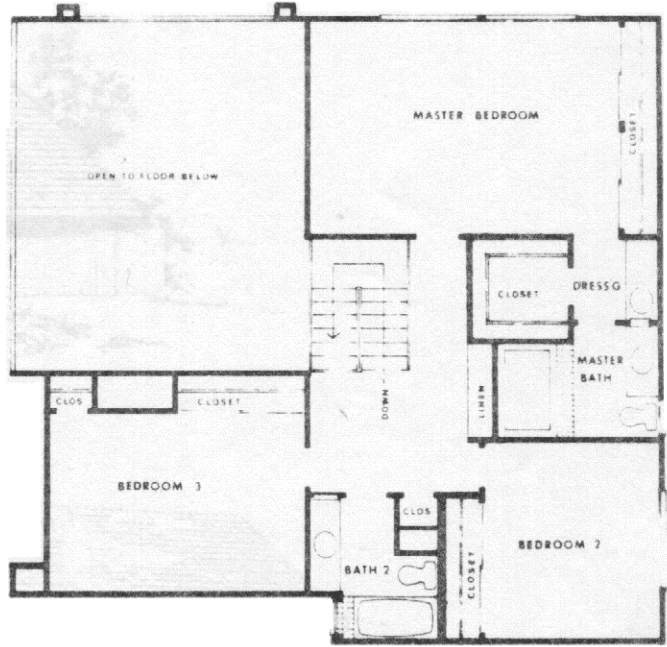




**Plan-1**  
*The*  
**COLUMBIA**  
**3 Bedroom & Den**  
**2 1/2 Bath**  
**Formal Dining**



**First Floor**



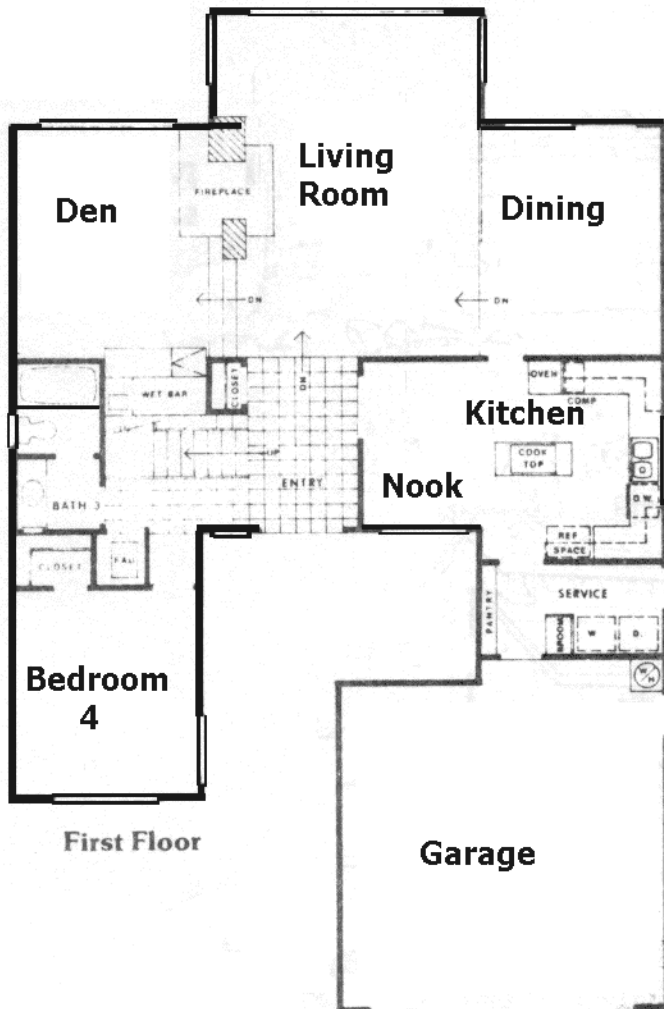
**Second Floor**

Hollyfed's policy is one of constant innovation and improvement. Fine, more desirable homes and more lasting home values are the results. Consistent with this policy, Hollyfed reserves the right to make product, design or price changes without notice or obligation.



## Plan-3 The Constellation

**4 Bedroom & Den  
3 Bath  
Formal Dining**



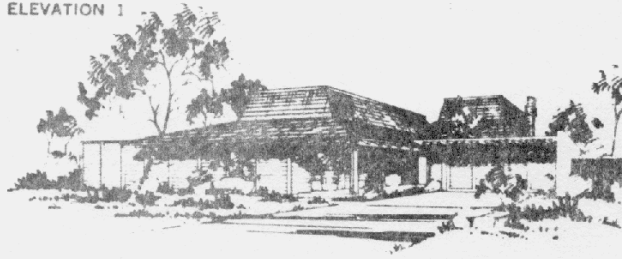
Hollyded's policy is one of constant innovation and improvement. Fine, more desirable homes and more lasting home values are the results. Consistent with this policy, Hollyded reserves the right to make product, design, or price changes without notice or obligation.

# The Dover

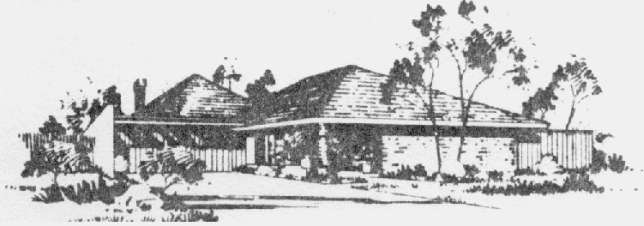
3 bedrooms, 2 baths, family room, dining and living room areas.

Prestige master bedroom suite. Huge walk-in closet. Dramatic atrium. Distinctive select walnut kitchen cabinets. Unimpaired view of lake from master bedroom, dining area and living room. Home prepared for air conditioning. Decorative floor tile. Luxurious wall-to-wall carpeting. Floor to ceiling decorative ceramic tile in bathrooms. General Electric dishwasher, oven and range.

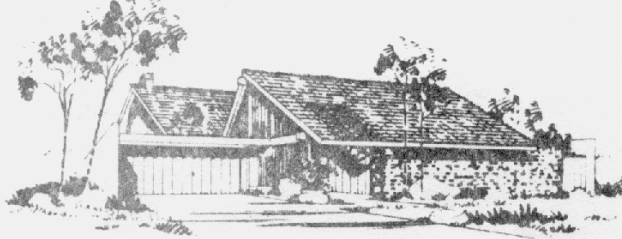
ELEVATION 1



ELEVATION 2



ELEVATION 3

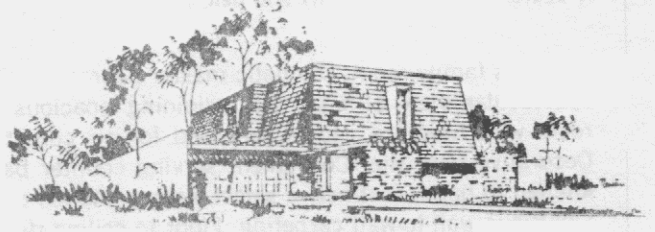


# The Empress

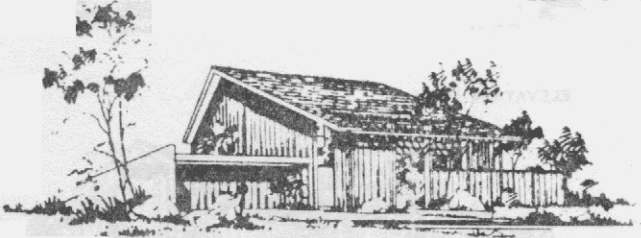
4 bedrooms, 3 baths, and family room.

Unique conversation pit with view of lake. Gracious master bedroom suite with panoramic view of lake. Beautiful atrium. Distinctive select walnut kitchen cabinets. Home prepared for air conditioning. Huge walk-in closet. Laundry center on second floor. Decorative floor tile. Luxurious wall-to-wall carpeting. Floor to ceiling decorative ceramic tile in bathrooms. General Electric dishwasher, oven and range.

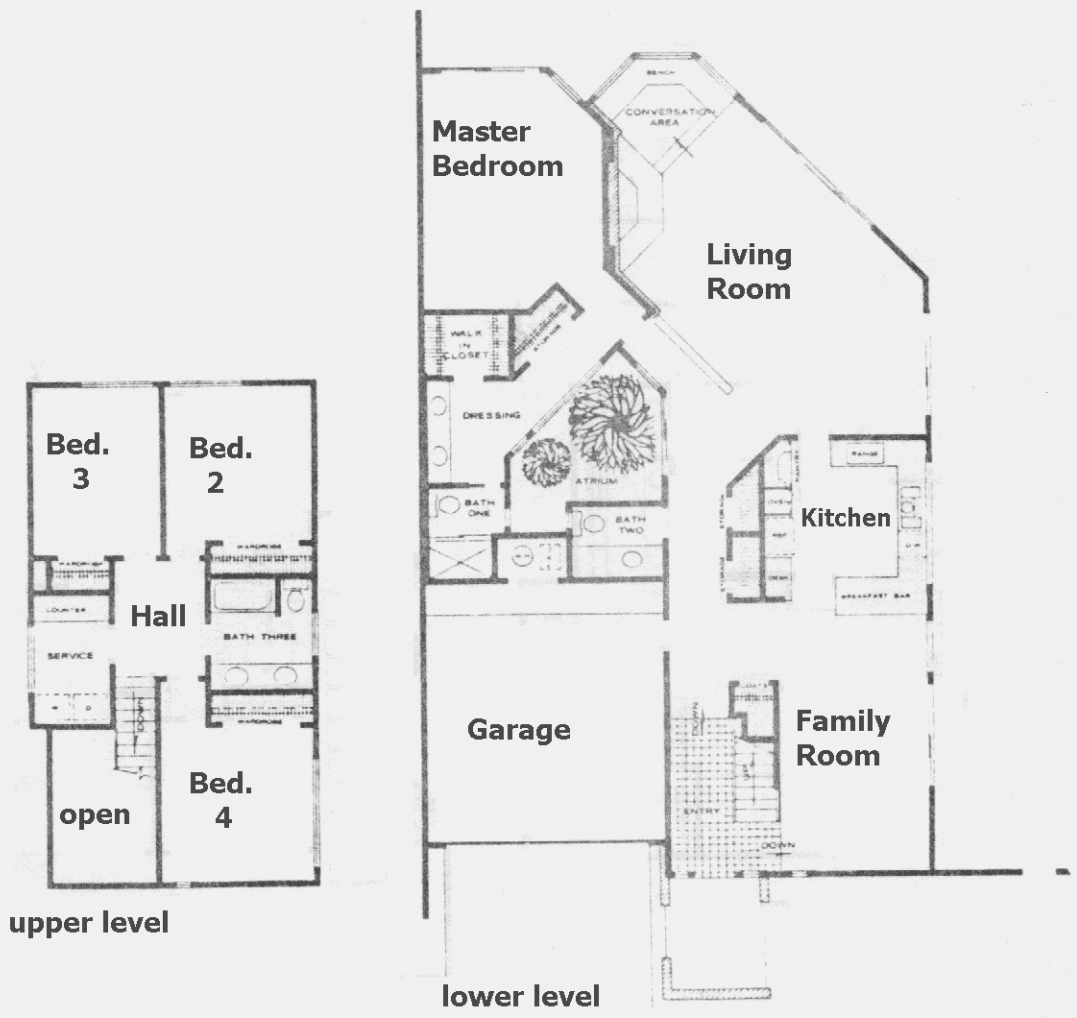
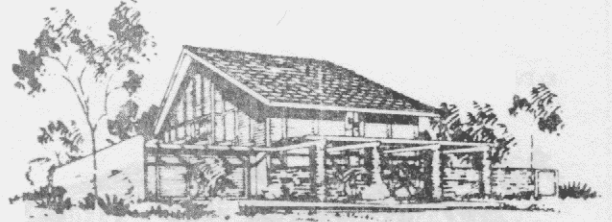
ELEVATION 1



ELEVATION 2



ELEVATION 3

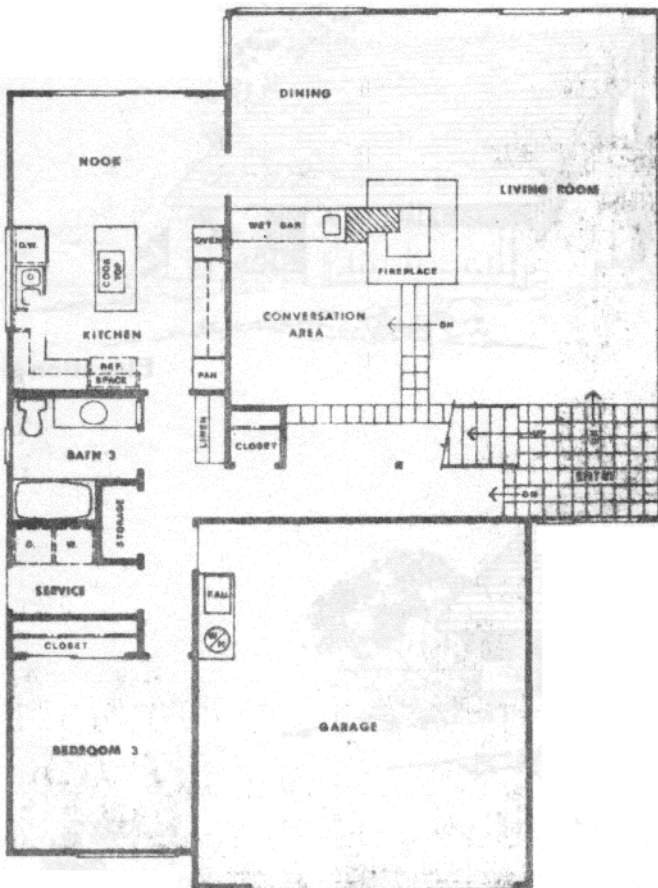




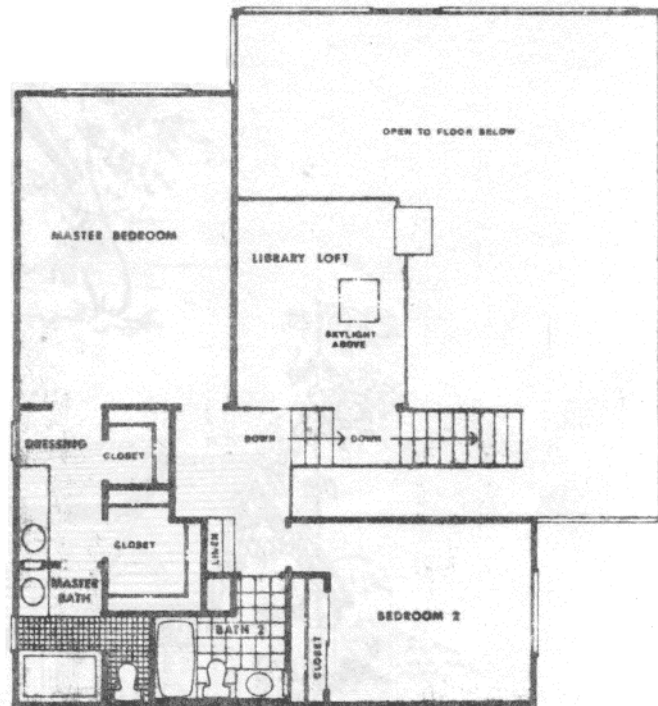
**Plan - 2**

*The*  
**INTREPID**

**3 Bedroom 3 Bath  
Library Loft  
Formal Dining**



**First Floor**



**Second Floor**

Hollyfed's policy is one of constant innovation and improvement. Fine, more desirable homes and more lasting home values are the results. Consistent with this policy, Hollyfed reserves the right to make product, design or price changes without notice or obligation.

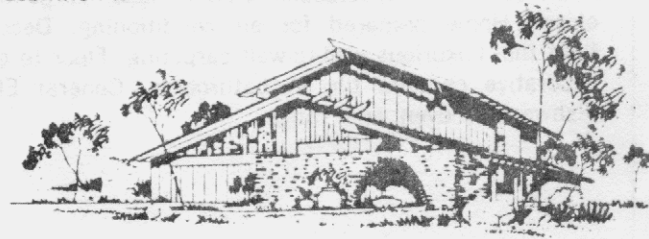


# The Islander

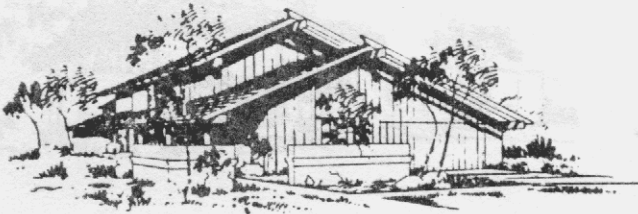
4 bedrooms, 3 baths, family room and separate dining room.

Exciting conversation pit. Magnificent double-door entry. Spacious step-down living room. Wet bar. Dramatic fireplace in master bedroom suite. Large walk-in closets. Home prepared for air conditioning. Distinctive select walnut kitchen cabinets. Decorative floor tile. Luxurious wall-to-wall carpeting. Floor to ceiling decorative ceramic tile in bathrooms. Convenient serving counter bar from kitchen to patio. General Electric dishwasher, oven and range.

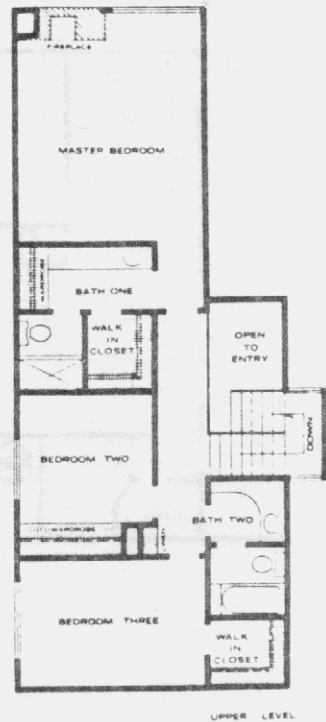
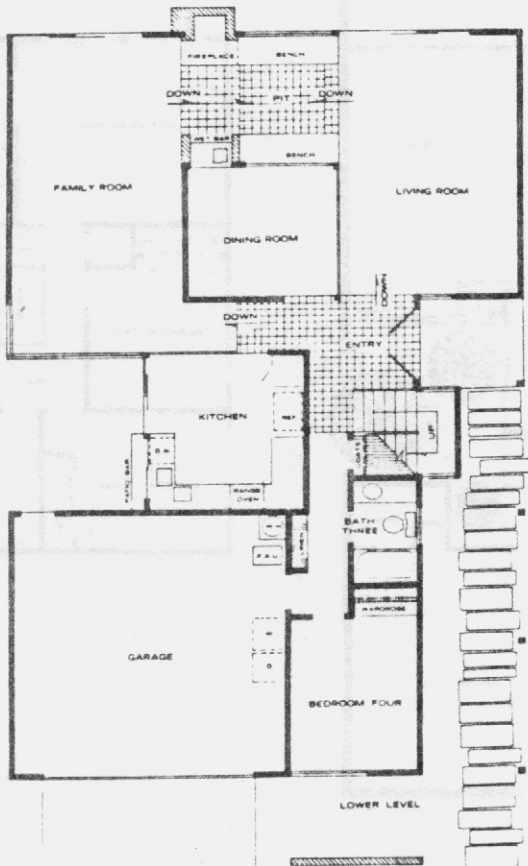
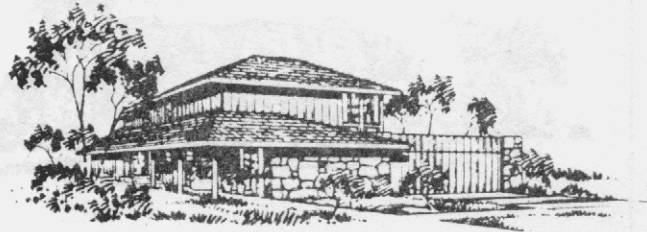
ELEVATION A



ELEVATION B



ELEVATION C

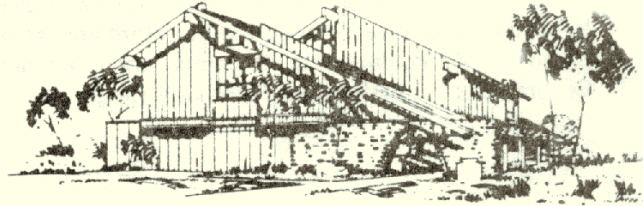


# The Martinique

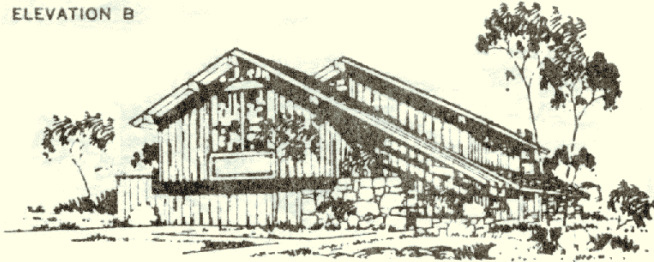
3 bedrooms, 2 baths, family room and versatile bonus room area (suitable for additional 3 bedrooms, or large recreation area, or office and den).

Magnificent double-door entry. Spacious master bedroom suite with sun-deck overlooking lake. Majestic fireplace in master bedroom. Exciting conversation pit. Home prepared for air conditioning. Convenient serving counter bar from kitchen to patio. Wet bar. Large walk-in closet. Distinctive select walnut kitchen cabinets. Decorative floor tile. Luxurious wall-to-wall carpeting. Floor to ceiling decorative ceramic tile in bathrooms. General Electric dishwasher, oven and range.

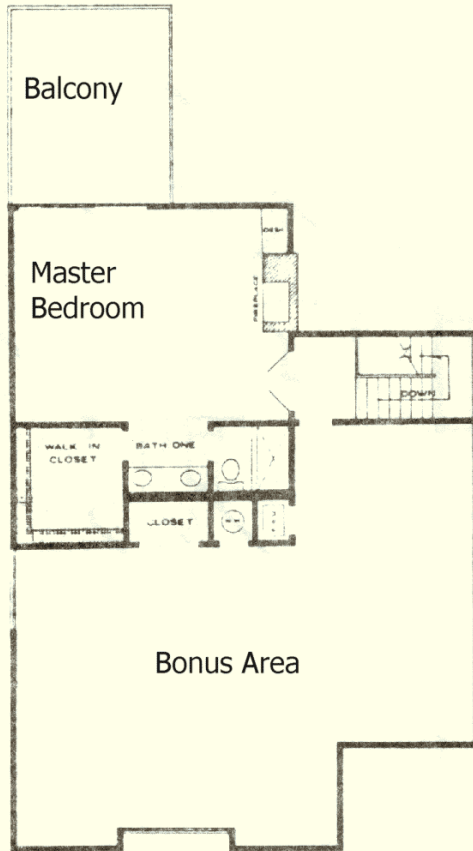
ELEVATION A



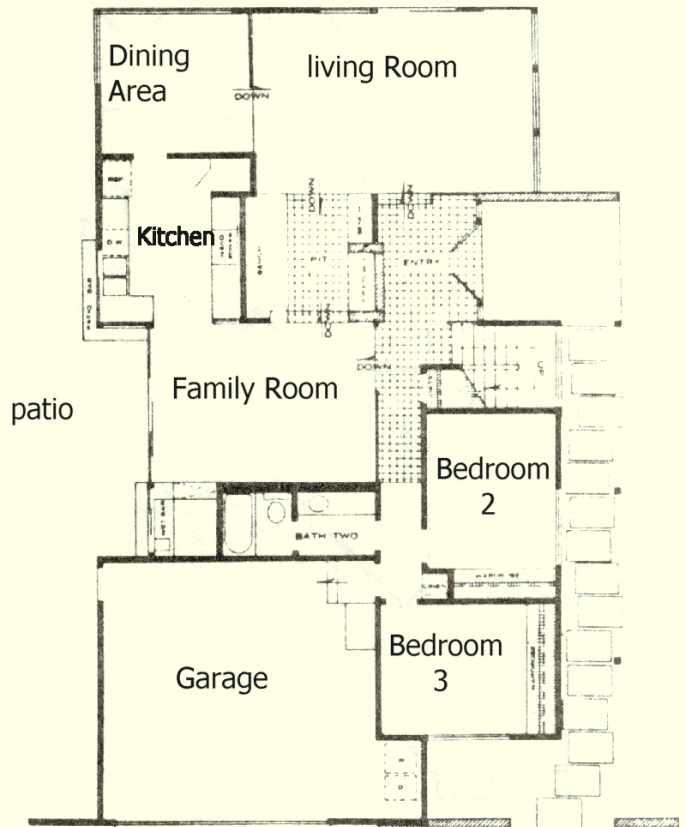
ELEVATION B



ELEVATION C



upper level



lower level