

KITCHEN

FAMILY ROOM

MASTER BEDROOM

BATH1

DINING

BATH 2

BEDROOM 2

HALL

LIVING ROOM

ENTRY

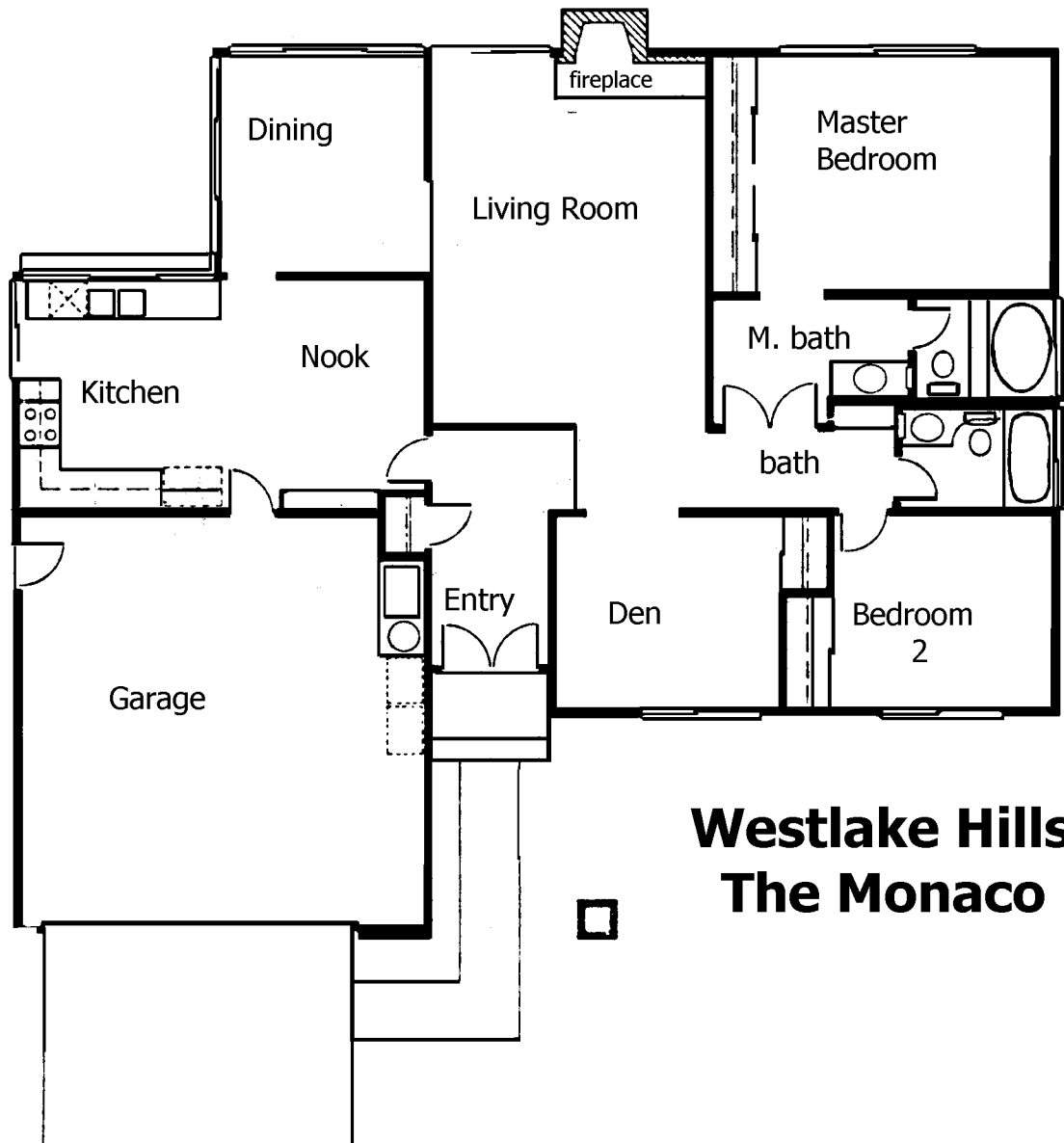
BEDROOM 4

BEDROOM 3

GARAGE

THE MONACO • You will see an exceptionally practical

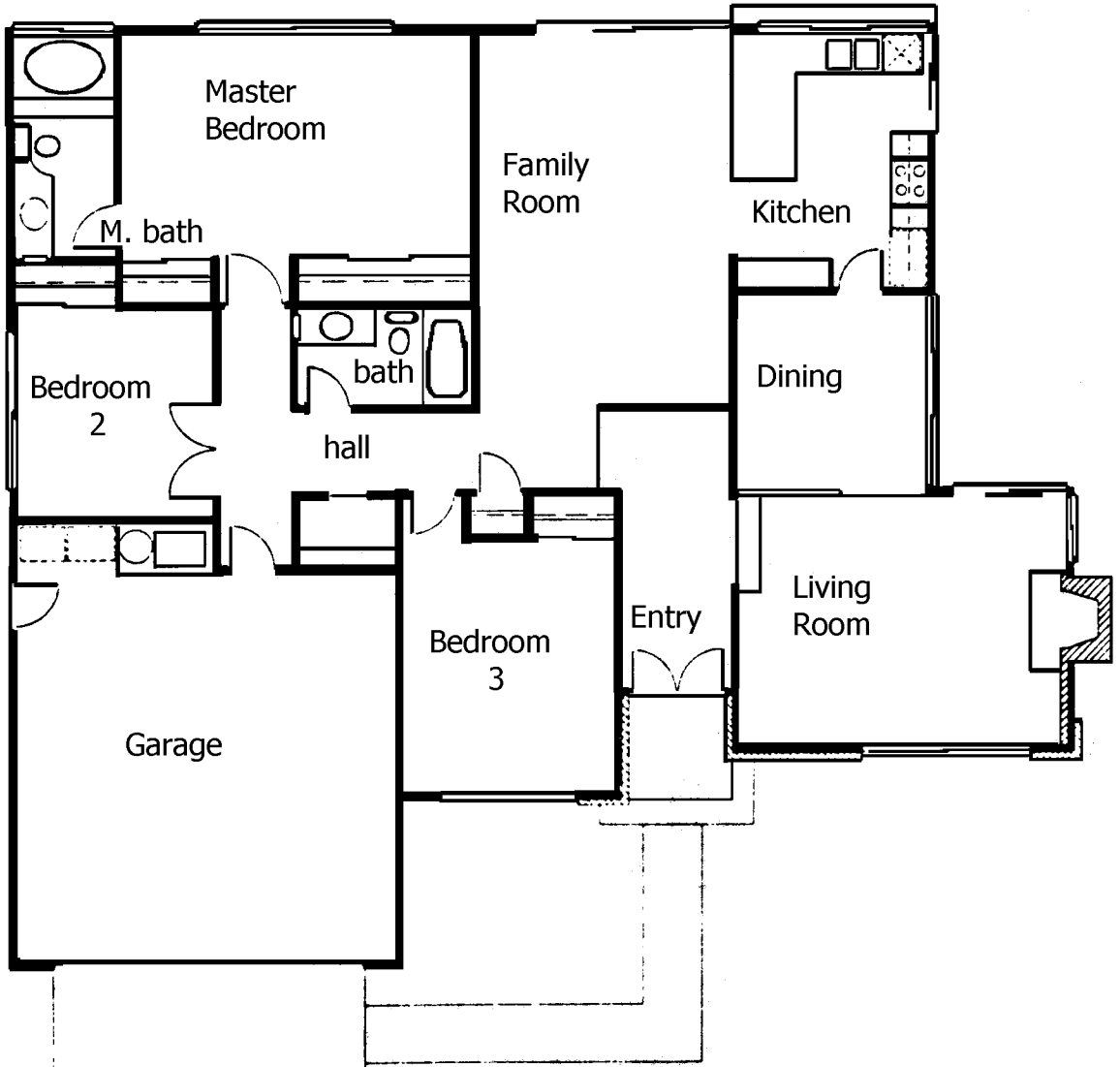
floor plan of unusual charm as you come through the double doors of the entry. You first glimpse the brick fireplace and hearth in the step-down living room. The adjoining dining room is slightly raised, so that dinner guests can overlook this hospitable living area. The adjacent garden kitchen looks directly into the outdoor patio and also has a good-sized breakfast nook for informal family meals. Retracing your steps—noticing, we hope, the sloped ceilings and wrought-iron railings along the way—you come to the double doors of a master bedroom suite which, we believe, would delight Princess Grace herself. A sense of privacy, a 12-foot wardrobe and a spacious bath-dressing area enhance this “home away from home” bedroom. Another full bath and bedroom open into the hallway, as does still another room, which you may choose to call a library, bedroom—or den, as we’ve named it. ■ We’re just as fussy about a home’s efficiency as we are about its aesthetic values. That’s why we like the Monaco so much. It has a great sense of style, and it makes every square foot *work*.



Westlake Hills The Monaco

THE CARMEL • Let's tour this charming house in count

clockwise fashion, starting at the sheltered porch entry and going through the double doors of the foyer and down into the living room with its sloped ceiling and brick fireplace. Stepping up into the formal dining area, we direct your attention to : balcony-like railing, "wall" of glass, and dramatic ceiling. The kitchen, as you can see, is exceptionally large, with coun space to match. The sloped-ceiling family area has sliding glass doors for easy access to your garden. This family gatheri place is so situated as to be the very heart of the Carmel. On now, down the hallway for a look into a 14-foot-long bedroo the second bath (wait 'til you see the first!) and still another bedroom. A turn in the hall brings you to your away-from-it- master bedroom. This suite measures just under 24 feet in length, which means there is room for a sofa, a desk and a loun chair or two . . . almost like having your own private apartment in your own home!



**Westlake Hills
The Carmel**