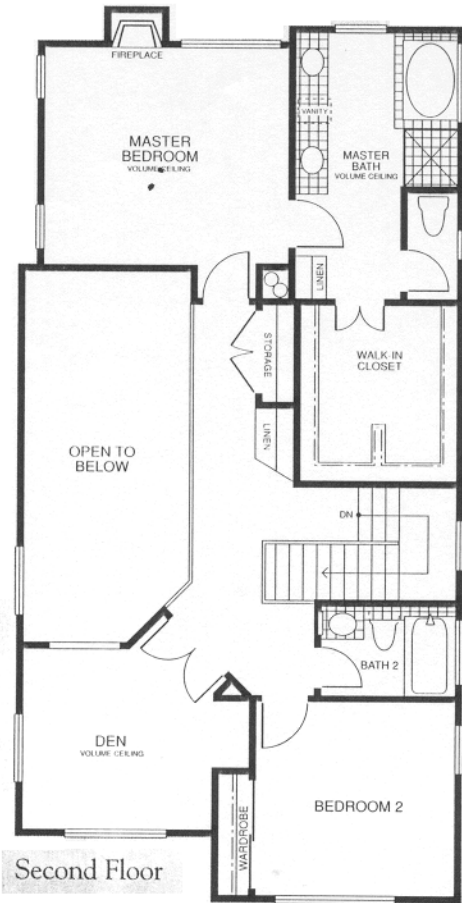
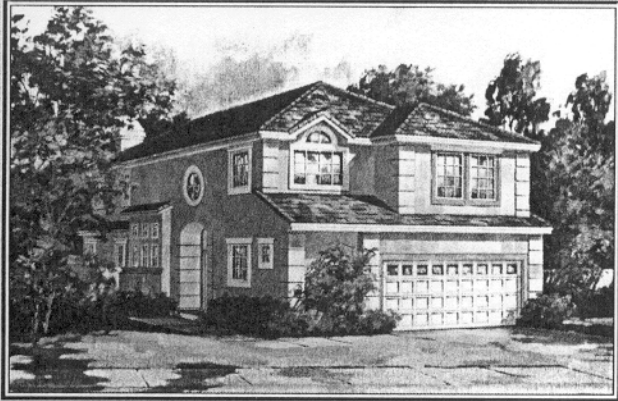
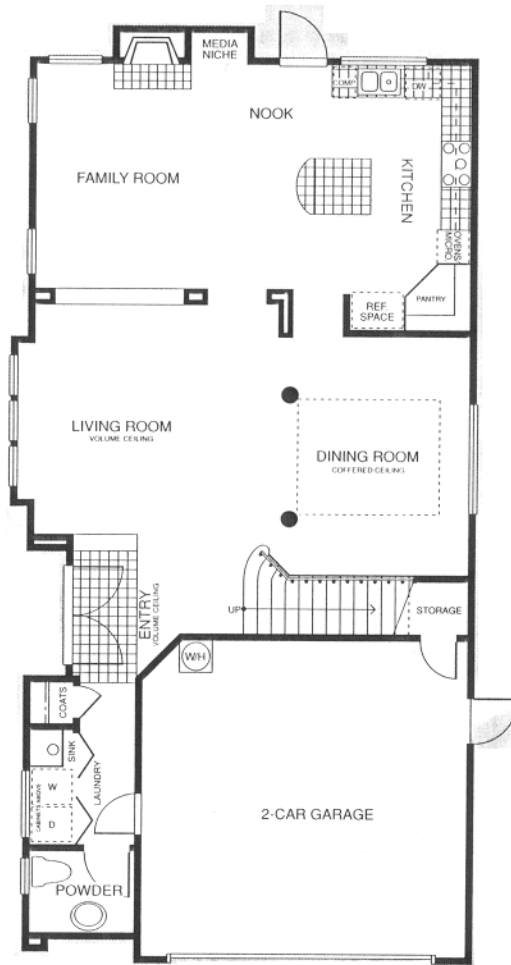
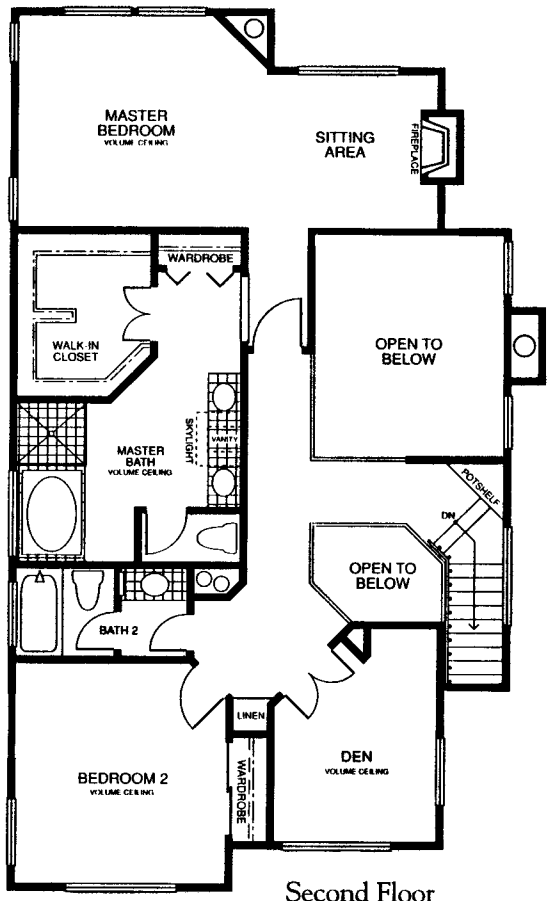


Westlake Cove Plan A

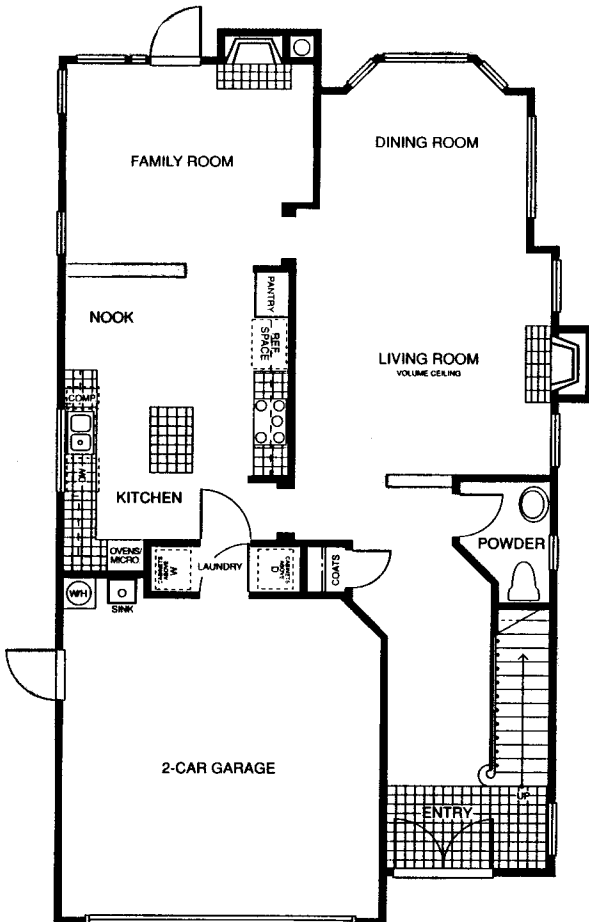


- ❖ Two bedrooms plus den (optional third bedroom)
- ❖ Two and one-half baths
- ❖ Family room with fireplace and media niche
- ❖ Living room with volume ceiling
- ❖ Private dining room with coffered ceiling
- ❖ Gourmet kitchen with center island
- ❖ Breakfast nook
- ❖ Master bedroom with fireplace and spacious walk-in closet
- ❖ Indoor laundry room



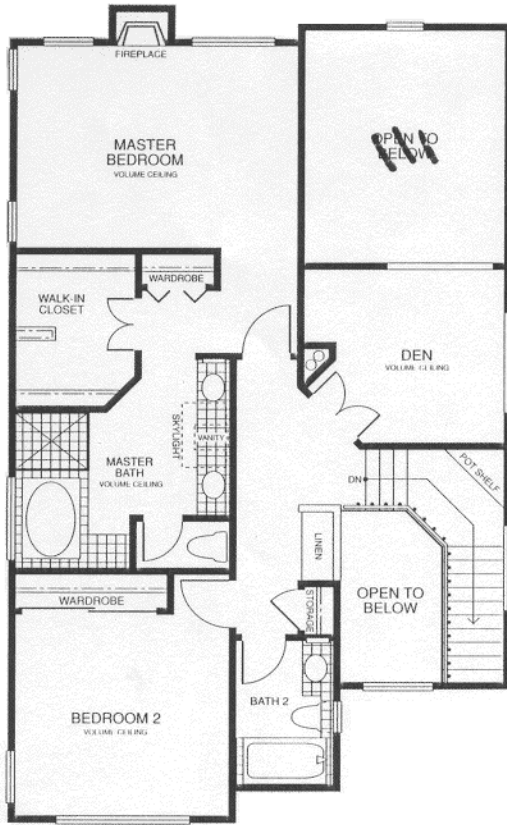


Second Floor

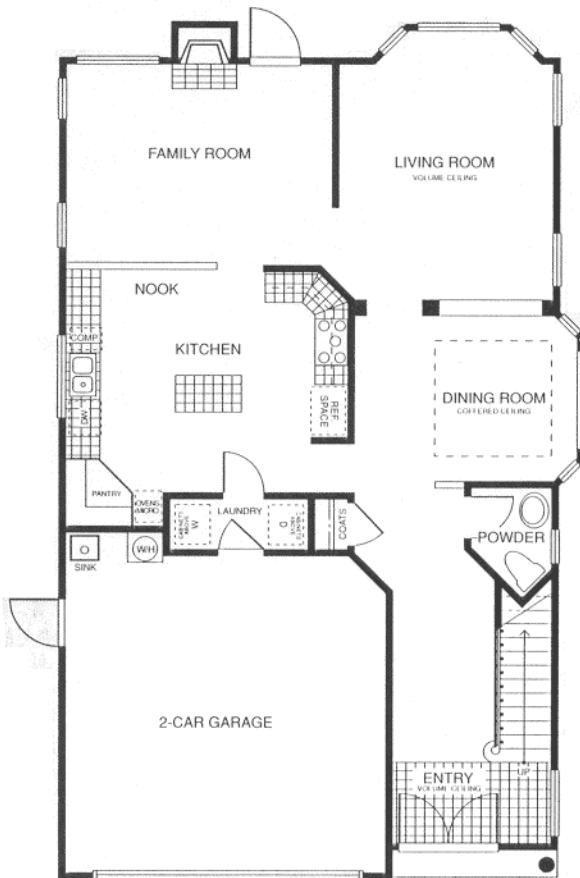


First Floor

Westlake Cove Plan B



Second Floor



First Floor

- ❖ Two bedrooms plus den (optional third bedroom)
- ❖ Two and one-half baths
- ❖ Family room with fireplace
- ❖ Living room with volume ceilings
- ❖ Private dining room with coffered ceiling
- ❖ Gourmet kitchen with center island
- ❖ Breakfast nook
- ❖ Master bedroom with fireplace
- ❖ Indoor laundry room

In an effort to continuously improve its product, the builder reserves the right to change maps, floorplans, exteriors, specifications and prices without notice. Special wall and window coverings, landscaping, custom-designed walks and patio treatments and many other items featured in and around the model homes are decorator-suggested and not included in the purchase price. Please see a sales representative should you have any questions. All renderings, floorplans and maps are artists' conceptions and are not intended to be actual depictions of buildings, fencing, walks, driveways or landscaping, nor are they necessarily to scale.