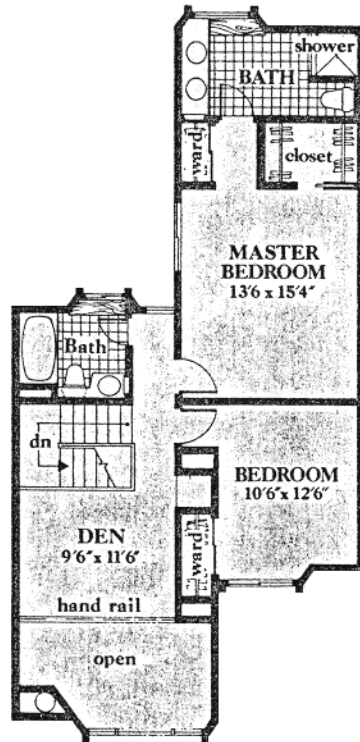
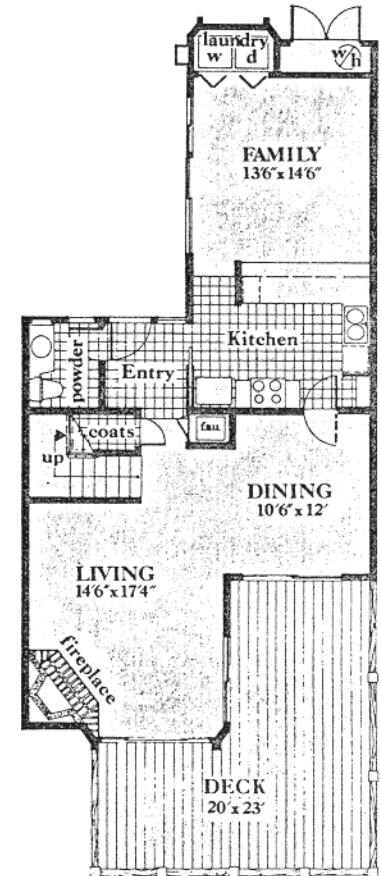
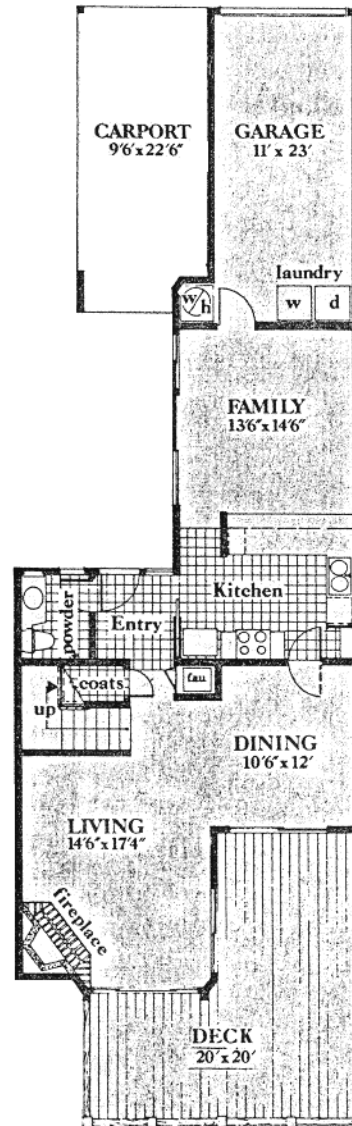


# Bristol Bay—B2



2 bedrooms and den. 2½ baths.

The entry area features a conveniently-located powder room and guest closet. A large living room contains an angled fireplace which extends high into the mezzanine den area. The dining area is adjacent to the living room. Both sections enter out to a large 20' x 20' deck area. The kitchen is conveniently located between the dining area and the family room. In turn, the family room is accessible from the enclosed garage area,\* an area that also contains the washer and dryer. This plan also features an attached carport. Besides the mezzanine den level, this plan also features a large master bedroom suite with walk-through wardrobe closet

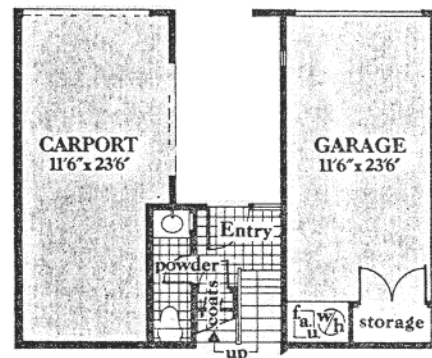
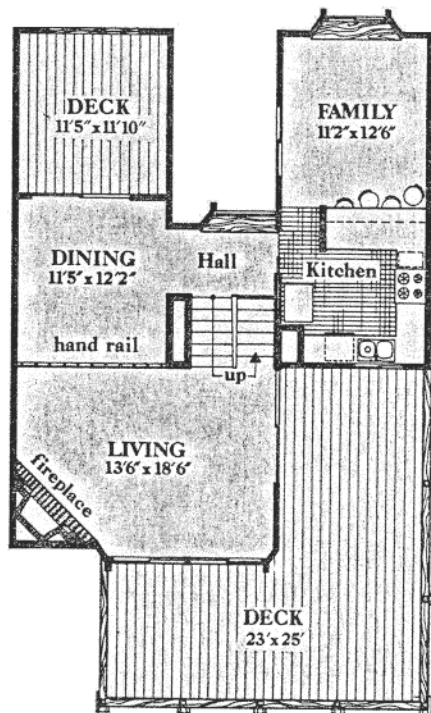
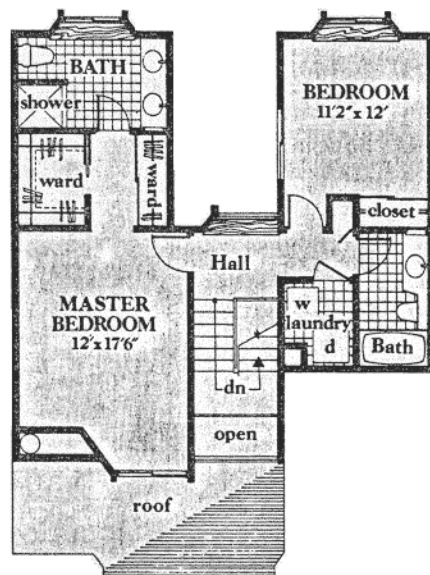


\*Plan B-2A

The difference between the B-2 plan and the B-2A plan is in the carport and garage area. In the B-2 plan the carport and garage are attached. The difference in square footage is due to the utility room in the B-2A plan not being included in the garage area.

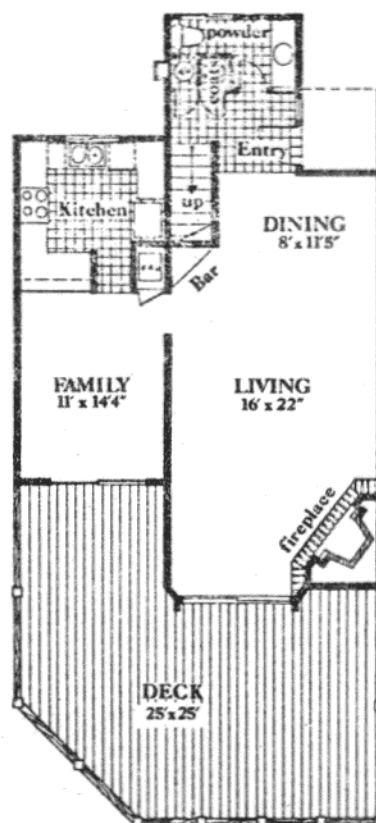
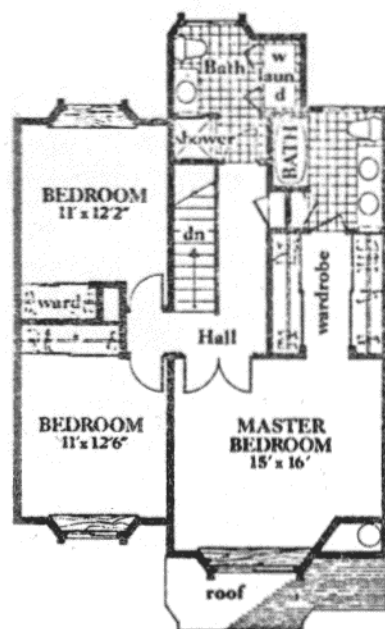
1725.5 square feet

# Half Moon Bay—A1



2 bedrooms. 2½ baths. Split-level design. Entering this plan, which has an attached car port and enclosed garage, you will find a conveniently located powder room and closet. This plan features a large living room, a focal point of which is a bold, angled fireplace. The kitchen opens out to a large family room, and is also adjacent to a separate dining room which overlooks the living room. The dramatic master bedroom suite has a walk-through wardrobe closet, vanity area and bath. A spacious second bedroom, second bath and strategically placed laundry and utility room complete this plan. 1593.8 square feet

## Hudson's Bay—C



3 bedrooms. 2½ baths.

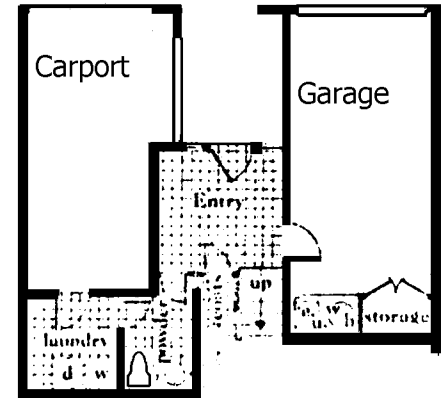
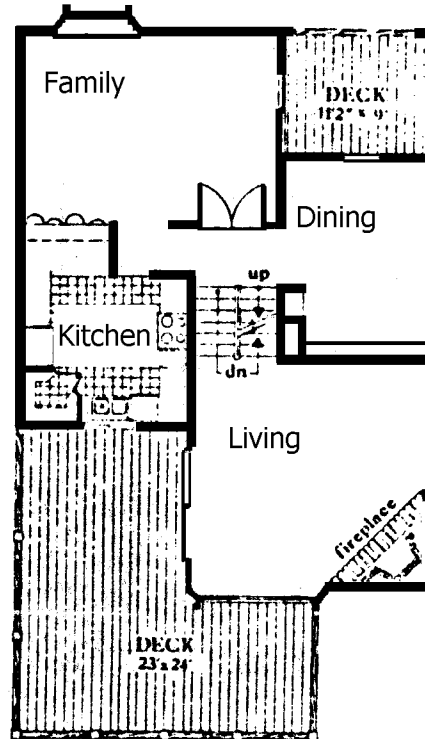
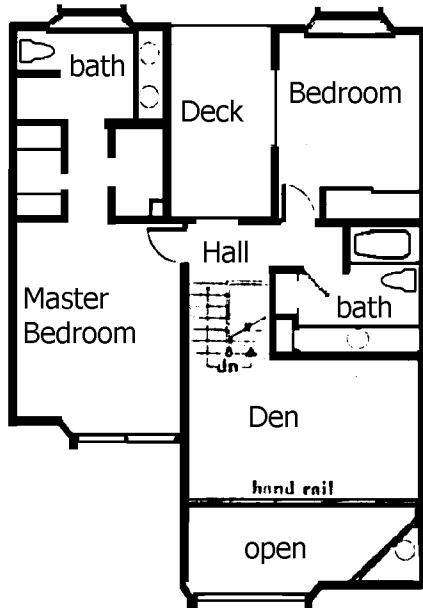
An unusually large 16' x 22' living room is but one of the outstanding features of this floorplan. The room is accented by a large fireplace, canted for maximum effect. The room also has a handy bar which is adjacent to the dining area. The lower level entry way contains a convenient powder room and guest closet. The family room is adjacent to the kitchen. Both the family room and the living room open to a large deck area. The second floor contains a large master bedroom walk-through wardrobe closet, vanity area and bath. The second bath has been handily selected as the location of the washer-dryer, laundry room. The second and third bedrooms complete this plan.

1827.6 square feet

Note: An optional feature is available in Units 2 and 3. The wall between the master bedroom and the second bedroom may be opened, thus creating a sitting room or retreat as part of the master bedroom suite.

# Westlake Bay

## Jamaica Bay—A3 unit II



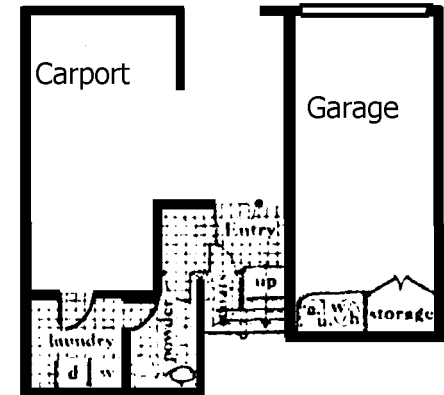
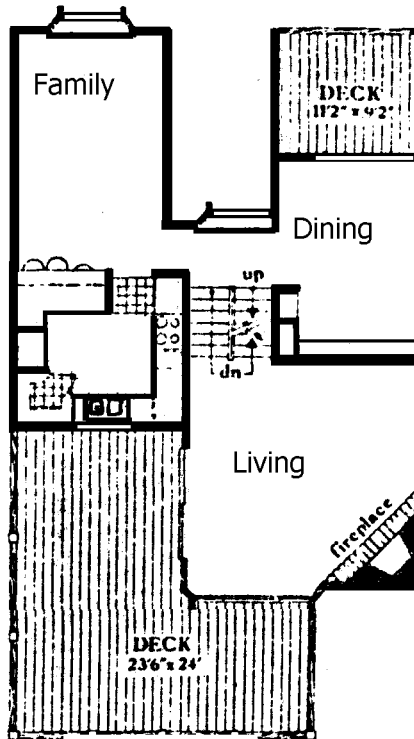
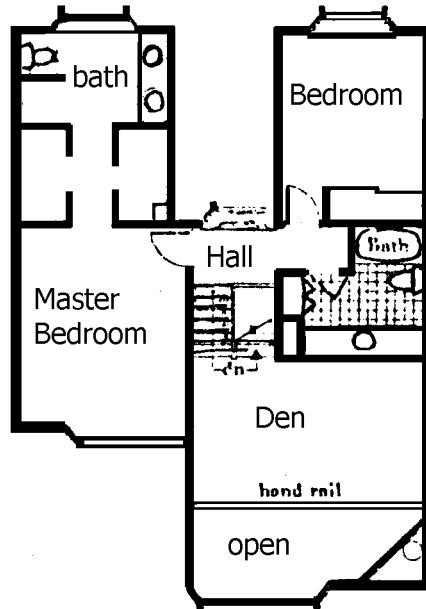
2 bedrooms and den. 2½ baths.  
Split-level design.

Design changes incorporated into the A-3 II plan and which differentiate it from the A-3 plan are the larger family room and the addition of another deck on the sleeping level, adjacent to the second bedroom.

2067.62 square feet

## Westlake Bay -

## Jamaica Bay—A3



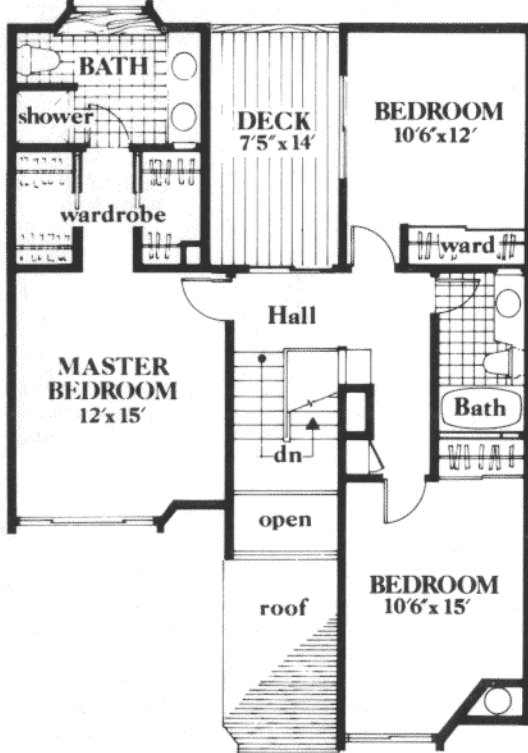
2 bedrooms and den. 2½ baths.  
Split-level design.

The garage provides a large storage area, and the plan's carport area contains its laundry and utility room. The entry hall area features a powder room and closet. The living room opens to a large patio-deck area. A handsome, angled fireplace is a striking design feature of the large living room. A separate dining room also opens onto another patio deck. The kitchen and family room are conveniently adjacent to one another. A mezzanine level den adds still another dimension to this outstanding plan. A walk-through wardrobe closet is also a feature of 'The Jamaica Bay's master bedroom suite, which also contains a large bath. The second bedroom and bath are also on this level.

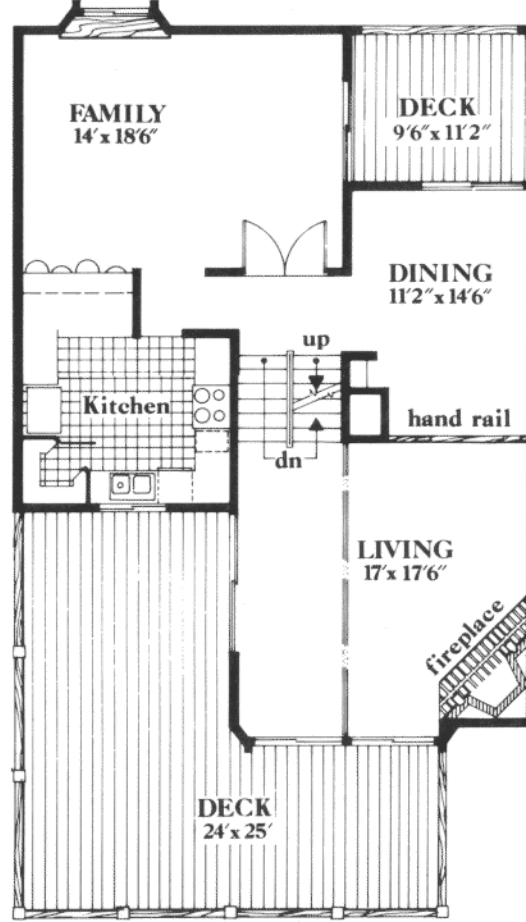
1935.4 square feet



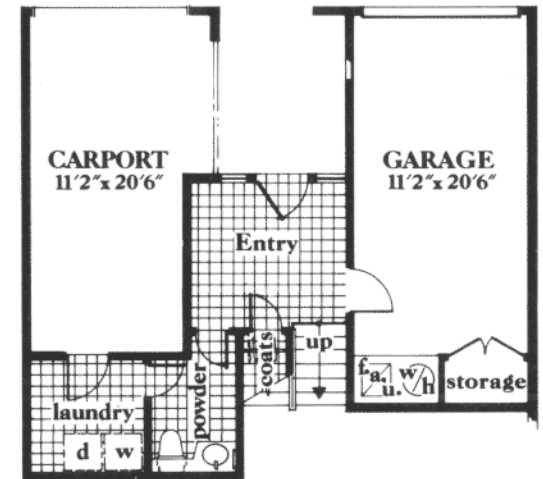
Third Floor



Second Floor



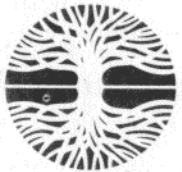
First Floor



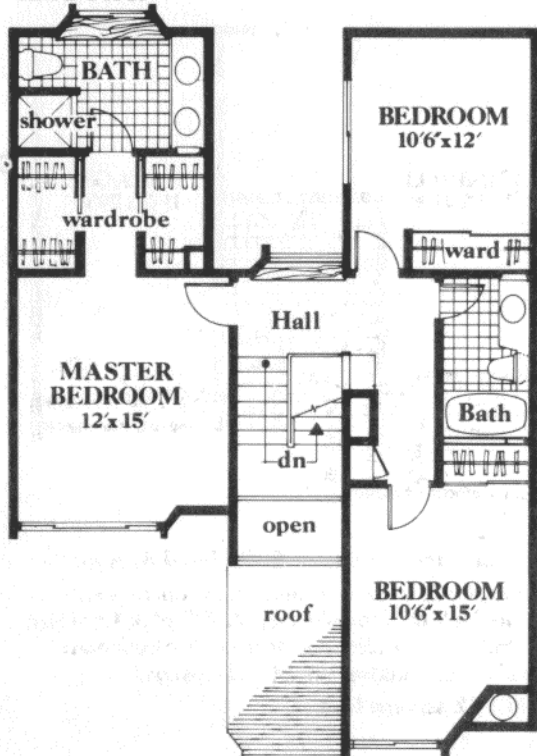
3 bedrooms. 2½ baths. Split-level design.

An expanded family room, which opens to a patio deck distinguishes the A-4 II plan from the A-4 plan. An additional deck on the bedroom level is still another structural change.

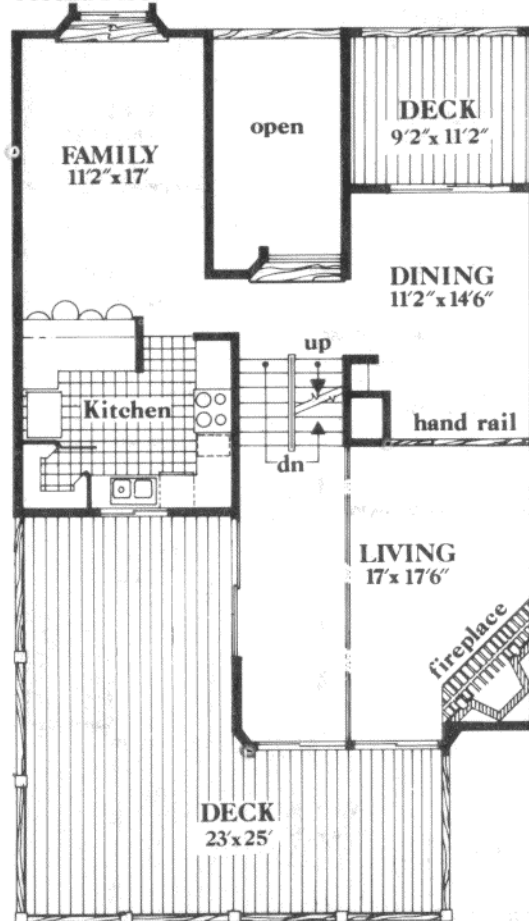
2072.42 square feet



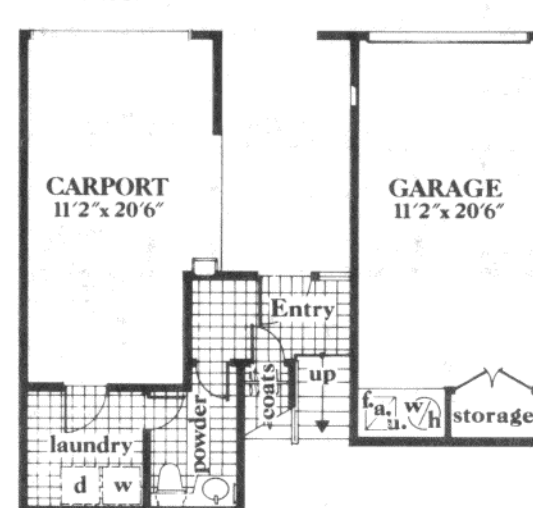
### Third Floor



### Second Floor



### First Floor



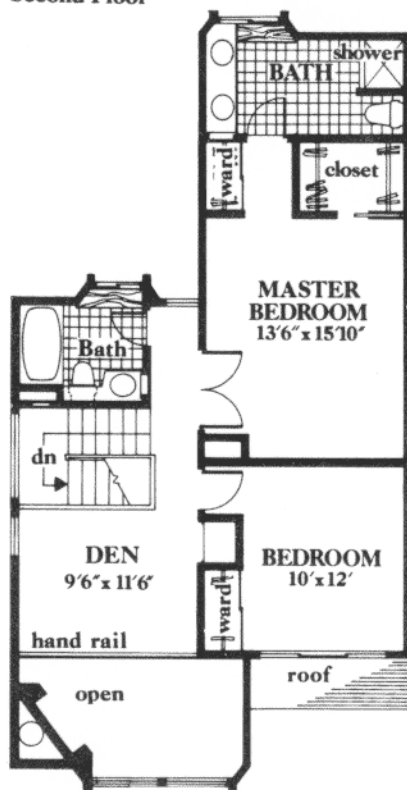
3 bedrooms. 2½ baths. Split-level design.

An enclosed garage and carport are both features of this plan. Ample storage area provided in the garage, while the laundry and utility room will be found in the rear of the carport area. Powder room and closet are on the entry level. Overlooking the living room and its angled fireplace is an attractive dining room which opens to its own deck for an added dining experience. The kitchen and family room are adjacent. The master bedroom has its own bath and vanity area, plus a large walk-through wardrobe closet. The unusually spacious second and third bedrooms, and second bath complete this plan.

1948.2 square feet



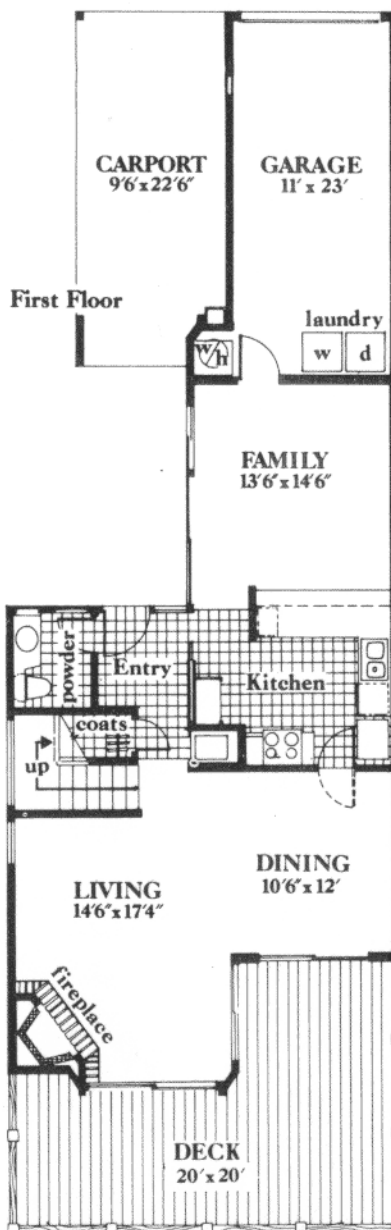
Second Floor



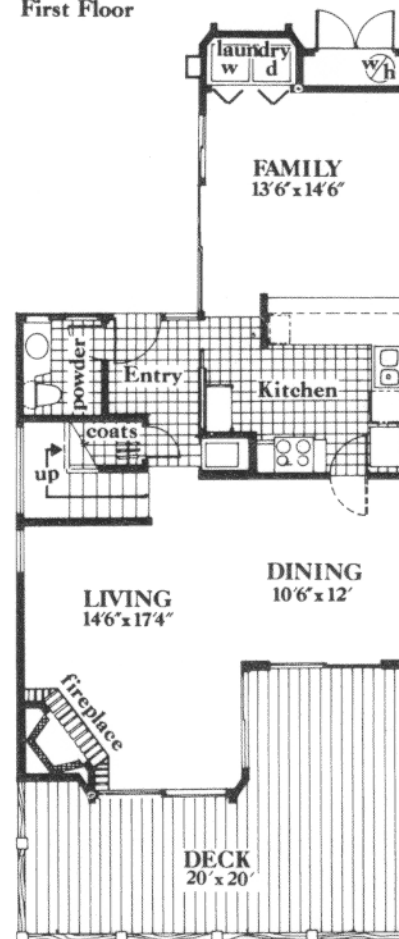
2 bedrooms and den. 2½ baths.

In the entry area of this plan are a powder room and guest closet. The entry also leads into the spacious living room which is dominated by a strong, angled fireplace. The dining area is adjacent to the living room and each room opens directly to a large deck area. The kitchen and family room may be entered conveniently through the garage. The enclosed garage also has a handy utility area. The master bedroom has a large walk-through wardrobe closet and a private bath and vanity area.

1658.8 square feet



First Floor



\*Plan B-1A

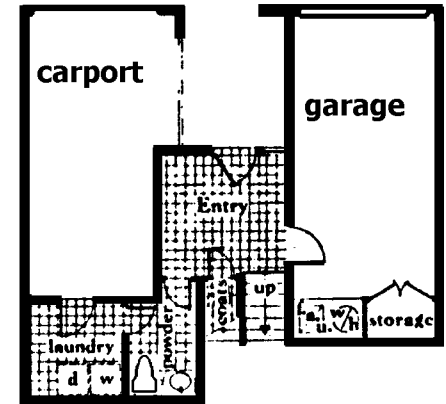
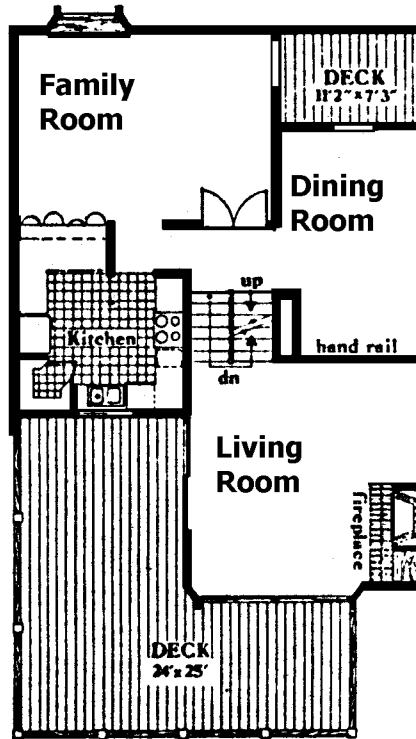
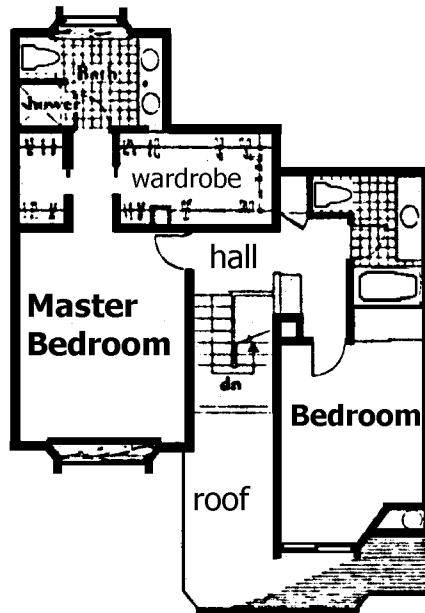
The difference between the B-1 plan and the B-1A plan is in the carport and garage area. In the B-1 plan the carport and garage are attached. The difference in square footage is due to the utility room in the B-1A plan not being included in the garage area.

1698.3 square feet



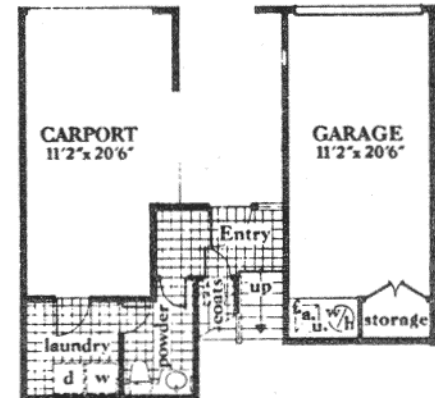
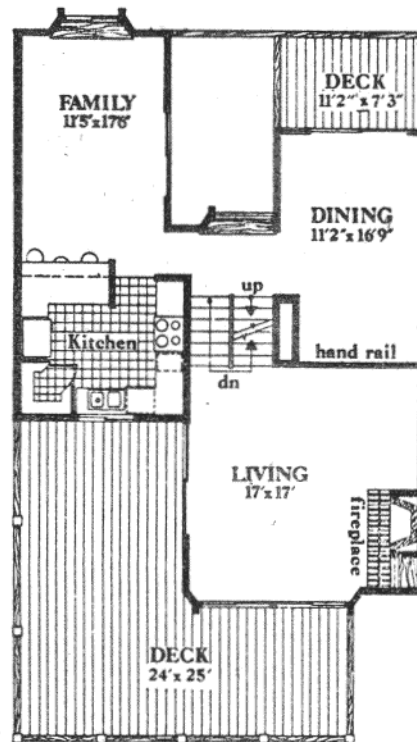
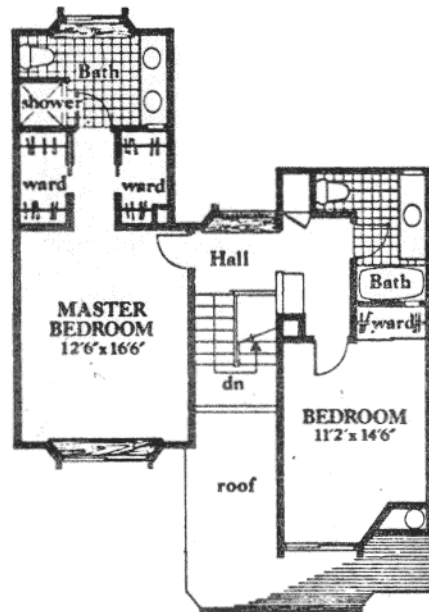
# Westlake Bay

## Monterey Bay—A2 unit II



2 bedrooms. 2½ baths. Split-level design.  
 The A-2 II plan differs from the A-1  
 with a larger family room and a larger  
 wardrobe area in the master bedroom.  
 2024.86 square feet

# Monterey Bay—A2



2 bedrooms. 2½ baths. Split-level design. Utility distinguishes the lower level of this home. The enclosed garage has an ample storage area, while the carport opens onto a large laundry room. A powder room and large closet are also on the entry level. The Monterey Bay has a very large living room with a corner fireplace which opens to a spacious exterior deck. A mezzanine-level dining room overlooks the living room and this large room also features access to an exterior deck. A well-planned kitchen opens to a comfortable and spacious family room. The master bedroom has large walk-through wardrobe closet and vanity area and bath. Second bedroom and bath complete this plan. 1840.7 square feet