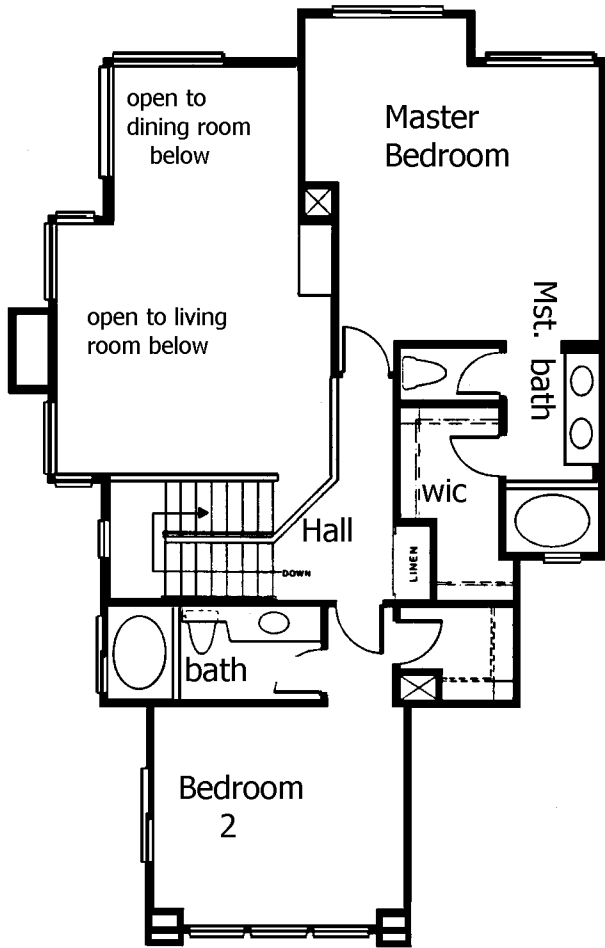


# ANTIGUA

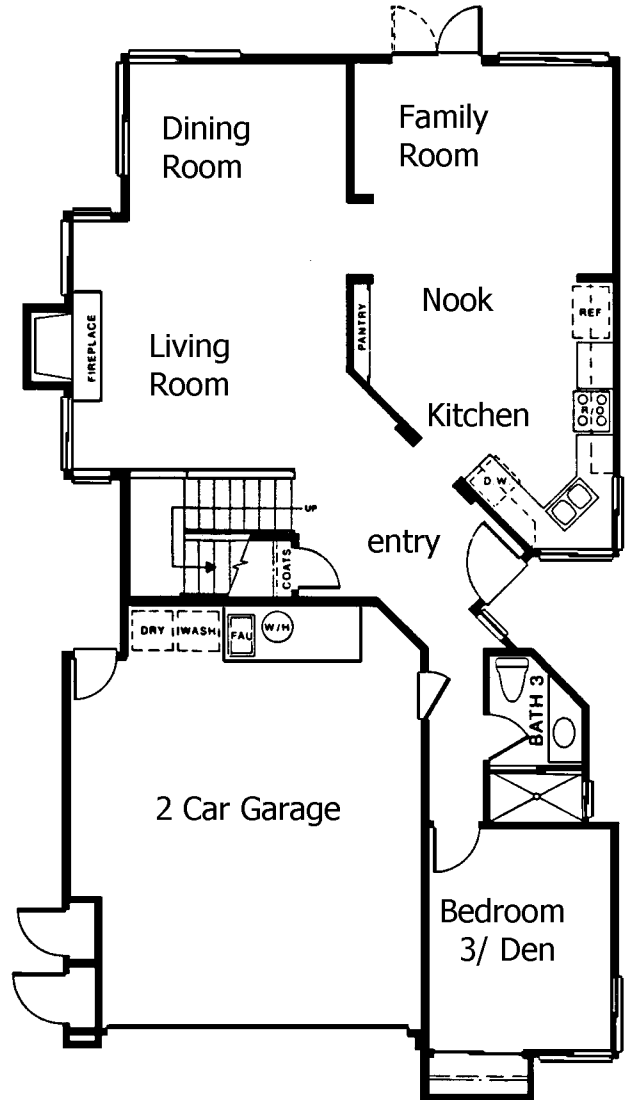
## PLAN TWO



• TWO STORIES • THREE BEDROOMS (OR TWO BEDROOMS PLUS DEN) • THREE BATHS • VOLUME LIVING ROOM AND DINING ROOM WITH FIREPLACE • FAMILY ROOM ADJACENT TO KITCHEN AND NOOK • TWO-CAR GARAGE • 1,889 SQUARE FEET



**Second Floor**



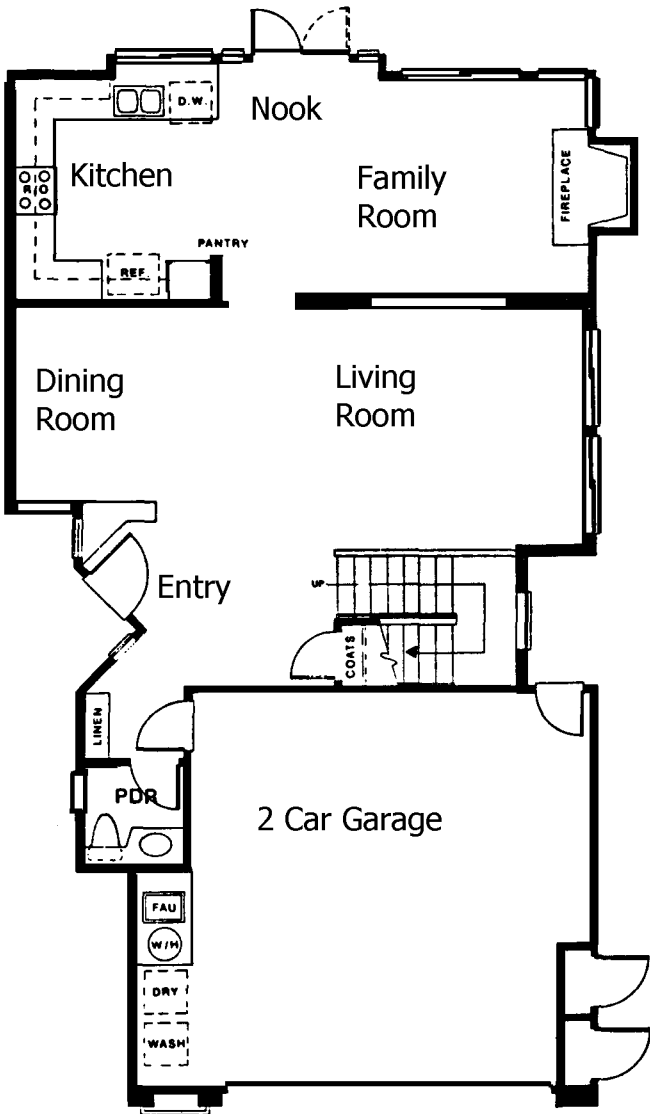
**First Floor**

# NASSAU

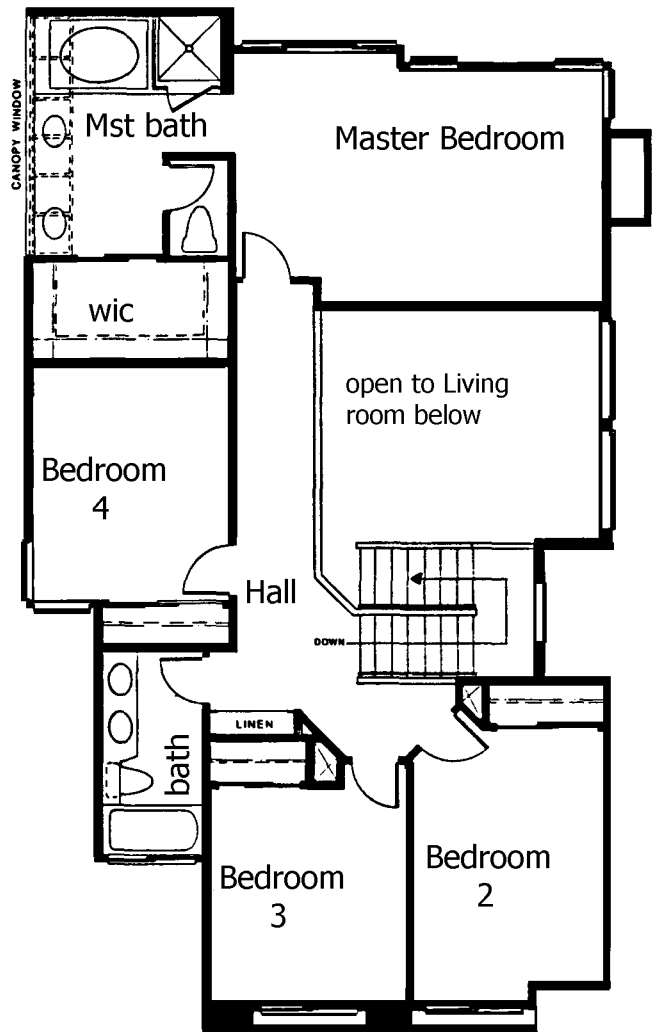
## PLAN THREE



- TWO STORIES • FOUR BEDROOMS • TWO-AND-ONE-HALF BATHS
- FORMAL LIVING ROOM AND DINING ROOM • FAMILY ROOM WITH FIREPLACE ADJACENT TO KITCHEN AND NOOK
- PRIVATE MASTER SUITE WITH CANOPY WINDOW BATH
- TWO-CAR GARAGE • 2,069 SQUARE FEET



**First Floor**

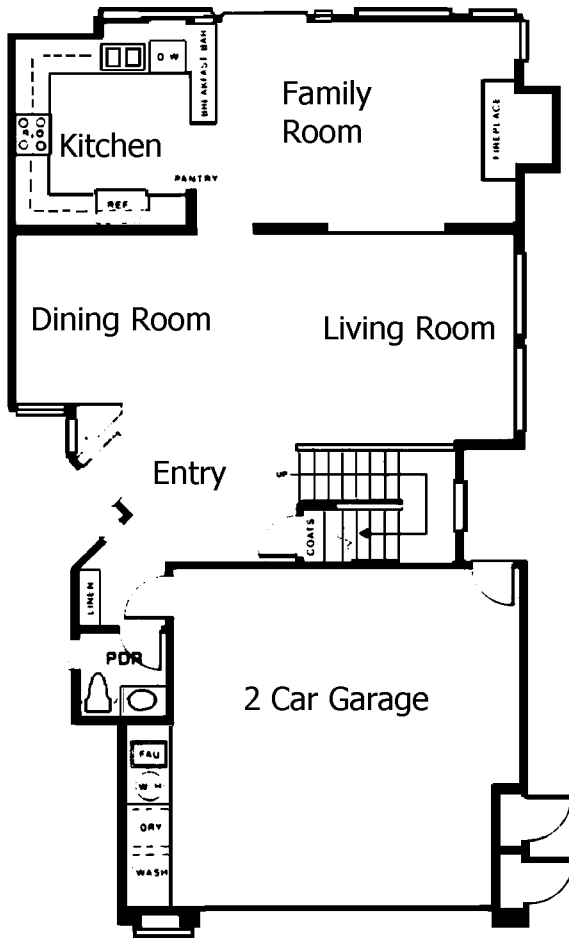


**Second Floor**

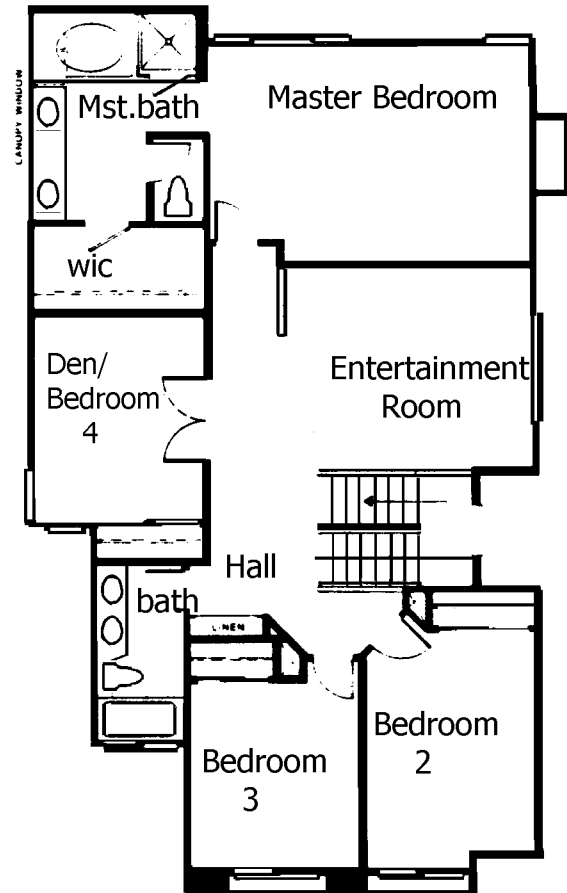
# MARTINIQUE

## PLAN FIVE

- TWO STORIES • FOUR BEDROOMS • TWO-AND-ONE-HALF BATHS
- FORMAL LIVING ROOM AND DINING ROOM • FAMILY ROOM WITH FIREPLACE ADJACENT TO KITCHEN
- PRIVATE MASTER SUITE WITH CANOPY WINDOW BATH
- HUGE ENTERTAINMENT AREA • TWO-CAR GARAGE
- 2,275 SQUARE FEET



**First Floor**

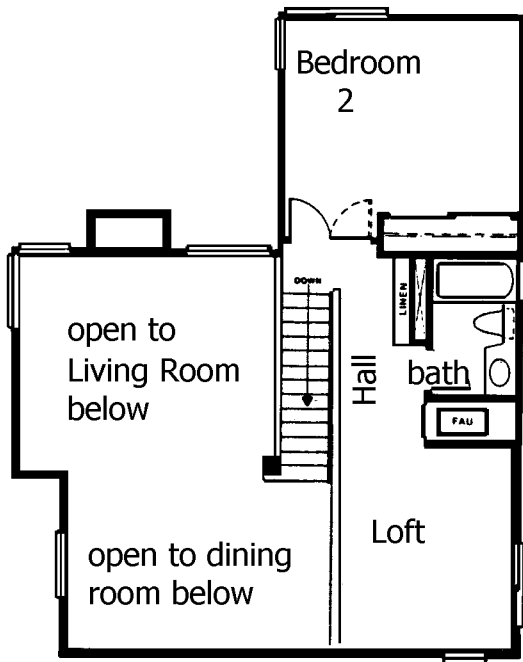


**Second Floor**

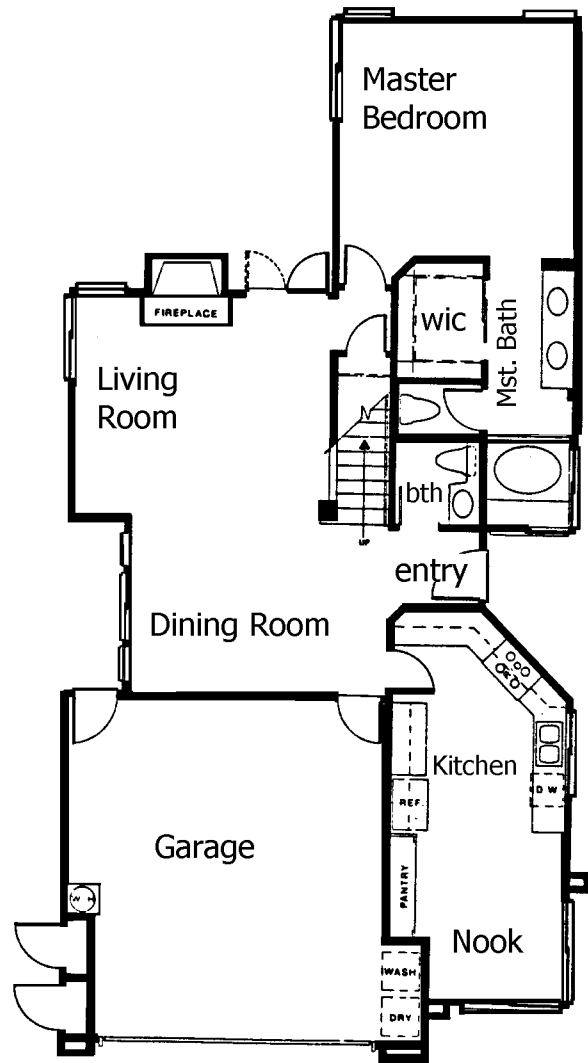
# JAMAICA

## PLAN ONE

- TWO STORIES • TWO BEDROOMS AND A LOFT • TWO-AND-ONE-HALF BATHS • VOLUME LIVING ROOM WITH FIREPLACE ADJOINING DINING ROOM • KITCHEN WITH NOOK
- CONVENIENT LOWER LEVEL MASTER SUITE
- TWO-CAR GARAGE • 1,552 SQUARE FEET



**Second Floor**



**First Floor**

# BERMUDA



## PLAN FOUR

• TWO STORIES • FOUR BEDROOMS • THREE BATHS • FORMAL LIVING ROOM AND DINING ROOM • KITCHEN WITH BREAKFAST NOOK • SEPARATE FAMILY ROOM WITH FIREPLACE • LUXURIOUS MASTER SUITE WITH FIREPLACE AND CANOPY WINDOW BATH • TWO-CAR GARAGE • 2,142 SQUARE FEET

