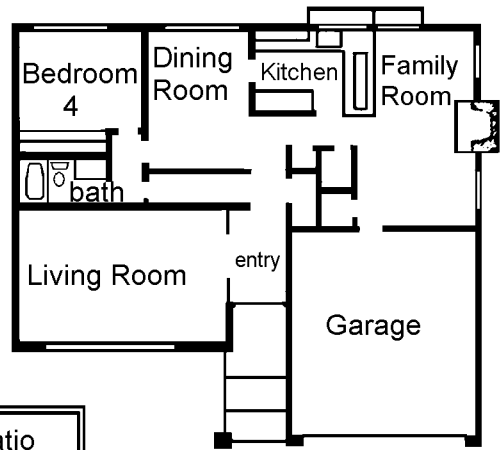


variety of ways. One way is the excellent choice of exterior elevations. As you approach, you may see a walled courtyard and huge window; there could be a graceful Spanish arch and a gently angled slumpstone chimney, or even a lovely combination of cedar siding and used brick. Once inside, a huge tiled foyer leads you to the magnificent living room on the right or through double doors to the eighteen foot long family room. Adjoining the family room, a luminous ceiling lights a kitchen which features a large pantry and the pass-through service bar. Sliding glass doors and windows bring your patio right inside for a real "garden kitchen" effect. Here, as in all Hillrise homes, you may choose from Salemwood, Decowood, or Tempowood cabinets. The latter style allows you to remove the center panel of the doors and wallpaper, paint, or decorate it in any way you wish. Again, double doors open to the master suite that offers thirteen lineal feet of closets and has its own private bath. Sliding glass doors lead to the rear yard, and aluminum louvers allow the balmy night air to lull you to sleep in safety without opening your exterior doors.

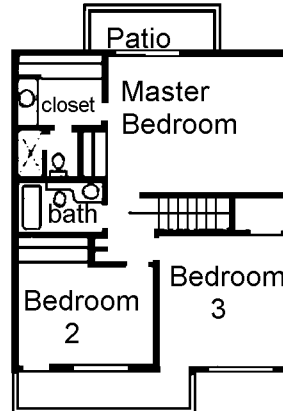


the Lassen

exterior styling is offered in the McKinley plan. Whether you desire a covered walk supported by a limestone pilaster, dramatic French shuttered windows, or rough hewn wood paneling with a massive entry, you'll find two story elegance here. Wrought iron railings lead to the spacious stepped-down living room and also decorate the stairway. The continuity is continued as the family room, formal dining room, and kitchen work as an entire unit. Take your choice — formal entertaining in the separate dining room, or casualness in the family room — both are served efficiently by the thoughtfully designed kitchen. Warmth is further reflected in the family room's wood burning fireplace. Above, the owner can treat himself to the ultimate in luxury in his own master suite. The suite has a private bath and dressing room and is completed by sliding glass doors that open onto a large balcony. The other upstairs bedrooms share another balcony. Truly, the McKinley tastefully combines warmth, efficiency, and dramatic styling.

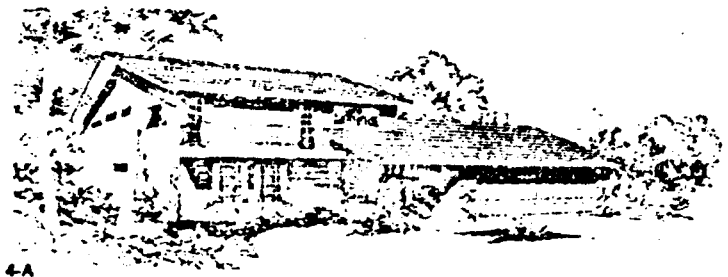


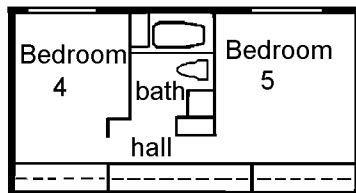
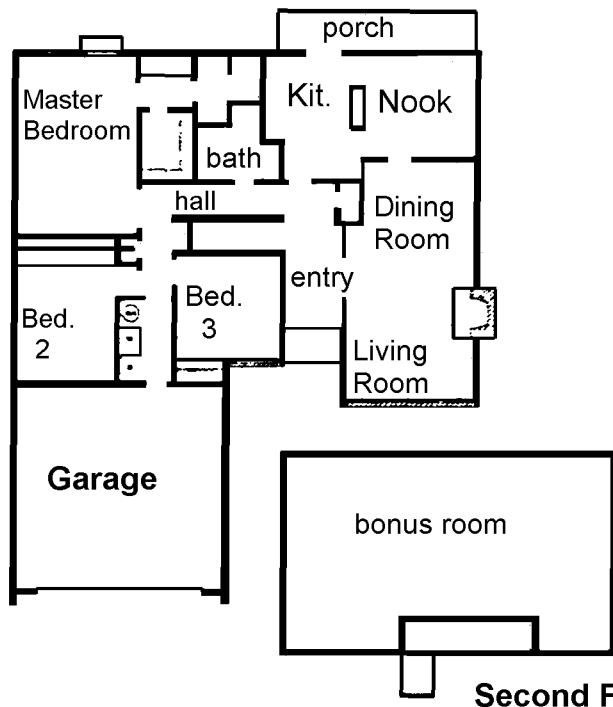
First Floor



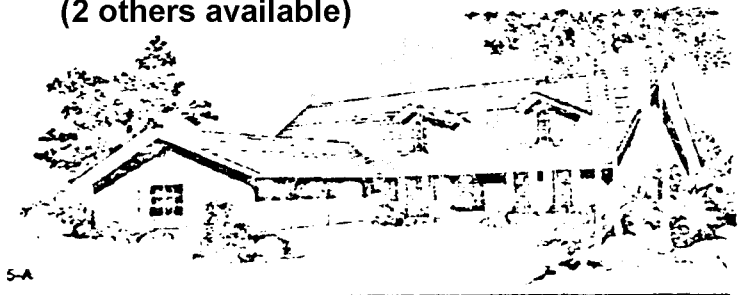
Second Floor

the McKinley





**Second Floor Alternate plan
(2 others available)**



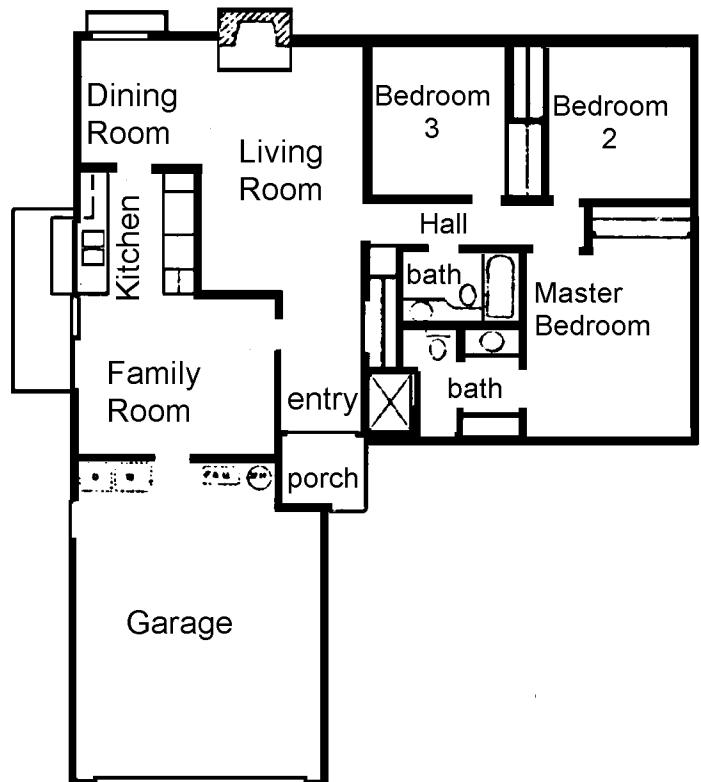
The Rainier's plan is really a home of "moods." One mood is set by a closed courtyard, and severe modern architecture; another by gabled windows with used brick exterior; and still another by rough hewn trim and a covered porch, fronted by a large Spanish arch. This plan is loaded with tasteful features and choices. A tasteful dining room is flanked by a breakfast nook with sliding glass doors leading to the garden. Both of these rooms are convenient to the efficiently designed kitchen. Three bedrooms and two baths complete the lower floor. Now, test your "moods" on the four available options on the upper level. The first is finished walls, ceilings, etc., and vinyl asbestos flooring. All plumbing and electricity are "stubbed in," permitting easy "do-it-yourself" finishing. Completed second story options include a fourth and fifth bedroom and bath; a rumpus room with wet bar and half bath; or a huge master suite with sitting and sleeping areas, a dressing room, bath with exercise area.

Let your mind wander over all these features and options and you'll agree the Rainier is a home to satisfy your every mood.

the Rainier

the Shasta

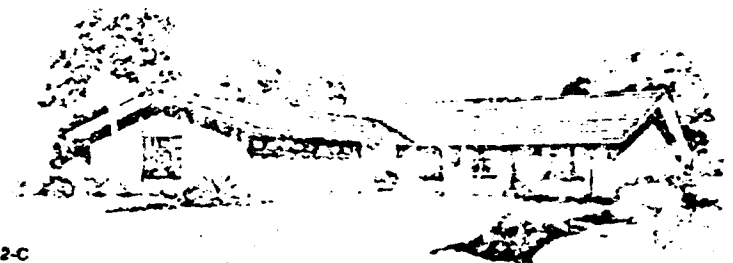
This home is truly a "leisure" residence with three distinct activity areas. As you enter from the covered porch, directly ahead, the living-dining complex beckons the owner to enjoy its gracious formality. To the left of the generous entry is the family room center for more casual living. This room opens to the side yard through sliding glass doors and shares the efficiently designed kitchen with the dining area. A luminous ceiling softly lights the kitchen which is convenient in every way. It's easy to serve from, pleasant to cook in, and has pantry storage. A third leisure area is the bedroom wing which is separate from the rest of the house. The separate bedroom grouping makes this entire part of the home quiet and peaceful. When you want to "get away from it all," you must only shut the master suite's double doors and relax to your heart's content. As you can see, in this home, casual everyday living, formal entertaining, or luxurious relaxing are just steps away and all under the same gently sloping roof.



2-A

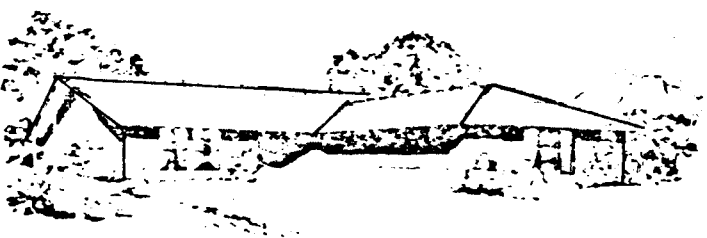
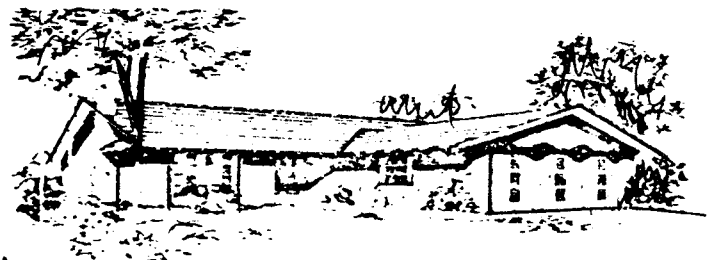
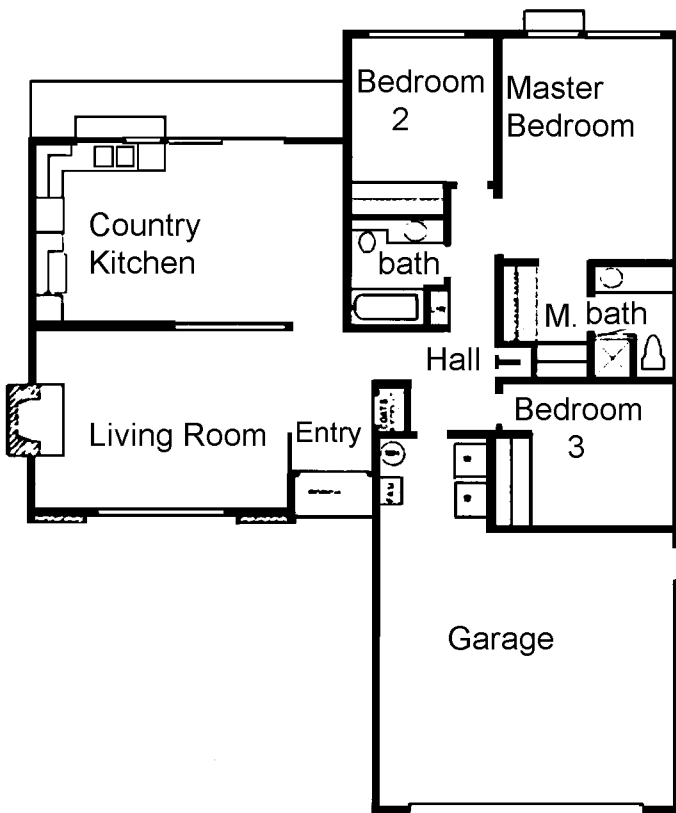


2-B



2-C

As you enter through the handsome double doors, you will notice immediately the spacious feel of this lovely Hillrise Home. The high, sloping ceilings and large foyer, accented with a wrought iron railing, welcome you to its expansiveness. Here you may see optional wood beams or the contemporary acoustical finish overhead. A finely crafted fireplace invites you to relax and enjoy the beautiful view through high front windows. The outdoor service bar with gold anodized sliding glass doors and window is just one feature of the huge country kitchen. There's enough room for dining in comfort with space for a t.v. recreation area at the other end of the room. The kitchen has an eye-level oven range, built-in dishwasher and a large pantry. The step-saving central hall system leads to the bedroom wing where the third bedroom is easily convertible into a handsome den. Another plus is the separate service area, which contains the home and water heating units plus the laundry appliances in a convenient compact area. Choose from either stone accented exteriors or one with rich cedar siding.



37AG
the Whitney