

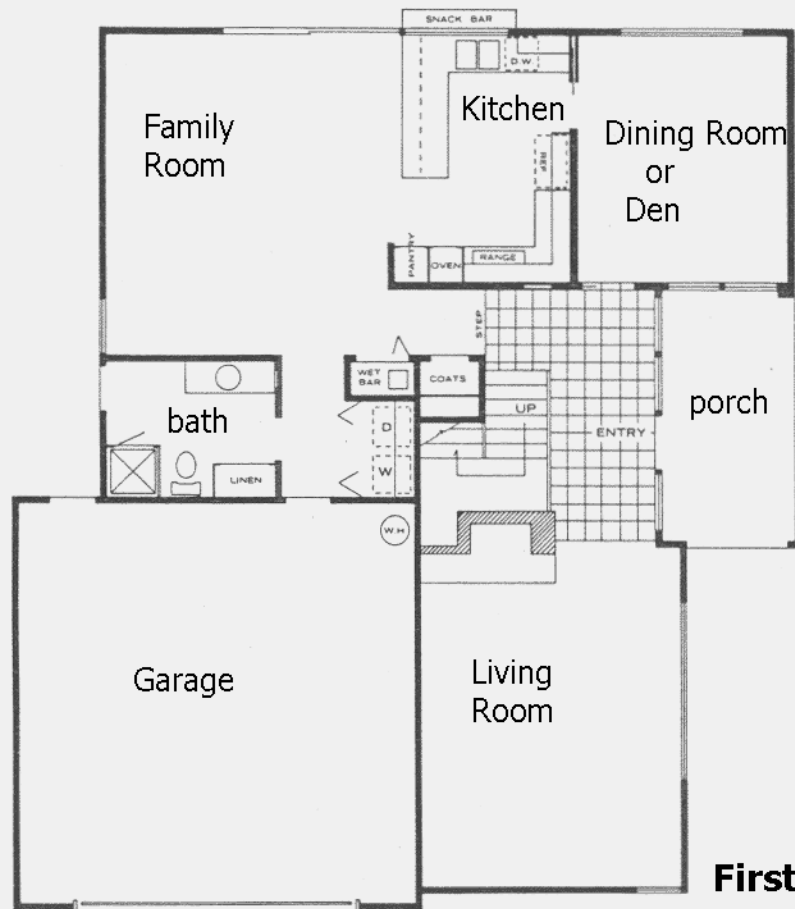
PROXMOOR Estates

Three Bedrooms • Two Baths • Fireplace • Family Room • Master Suite • Two-Car Garage with Indoor Access

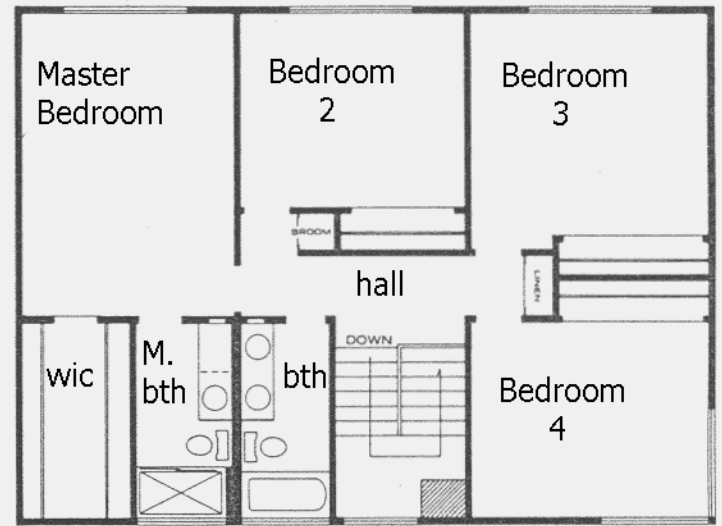
Plan 30

The subtle gentility of a shaded porch and tiled entry draws you in for a sweeping view of the soaring living room and cozy fireplace. On one hand discover a large family room with adjoining kitchen. On the other hand, if peace and quiet are in order, the private bedroom wing awaits. The master suite has its own sliding glass door access to the garden, plus walk-in closet, vanity area and bath. In all, this is a perfectly balanced plan for the way you want to live.





First Floor



Second Floor

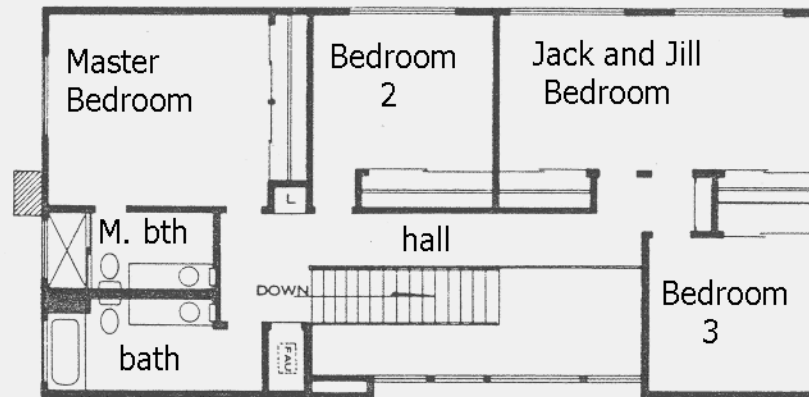
*Also Available with 3-Car Garage

Mayfair Home Series
PLAN 220

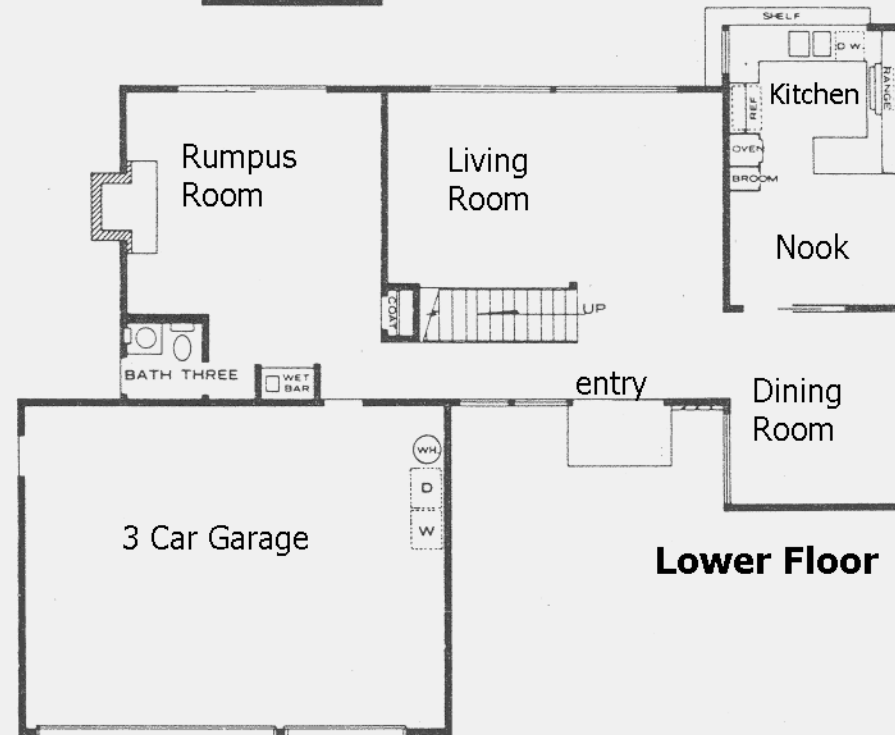
Approximately 2490 sq. ft. Living Area

MAYFAIR HOMES Must Have The Right To Make Modifications As Deemed Necessary.

Architectural Design By R. J. Marvick & Associates



Upper Floor



Lower Floor

Mayfair Home Series
PLAN 210

Approximately 2510 sq. ft. Living Area

MAYFAIR HOMES Must Reserve The Right To Make Modifications As Deemed Necessary.

Architectural Design By R. J. Marvick & A



Upper Floor

Lower Floor

Mayfair Home Series
PLAN 200

Approximately 2305 sq. ft. Living Area

MAYFAIR HOMES Must Have The Right To Make Modifications As Deemed Necessary.

All plans copyrighted

Architectural Design By R. J. Marvick & Associates



Mayfair Home Series

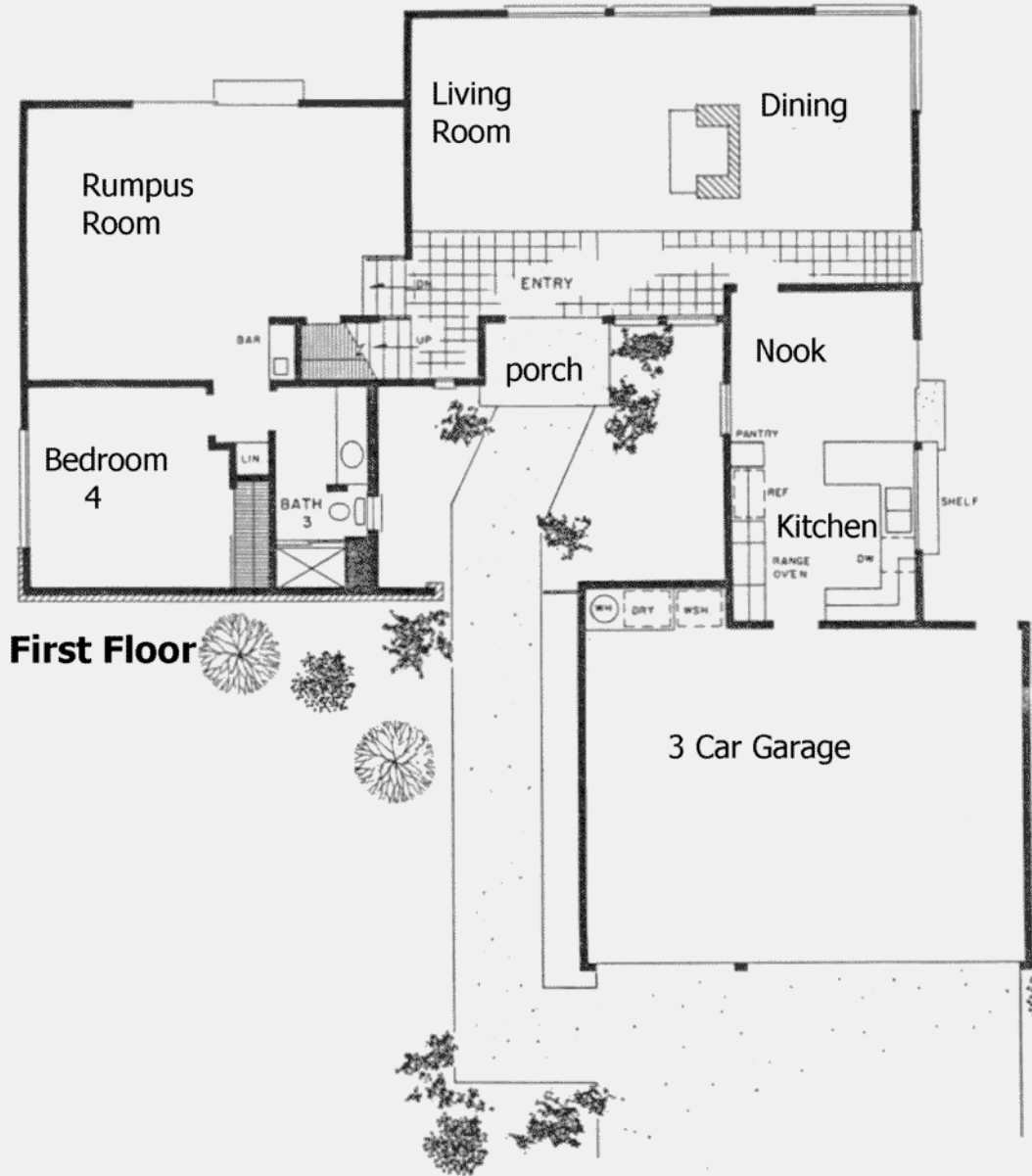
PLAN 140

Approximately 1750 sq. ft. Living Area

MAYFAIR HOMES Must Reserve The Right To Make Modifications As Deemed Necessary.



Second Floor



First Floor

PLAN 8

Mayfair Homes, Foxmoor Hills

PLAN 8

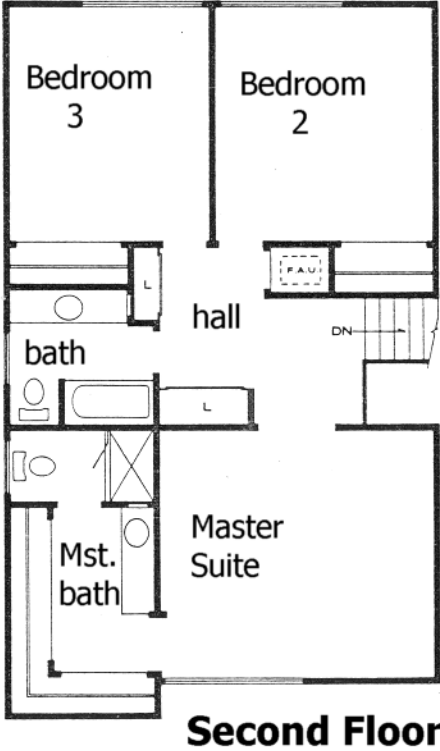
Approximately 2260 sq. ft. Living Area

MAYFAIR HOMES Must Provide The Right To Make Modifications As Deemed Necessary.

All plans copyrighted

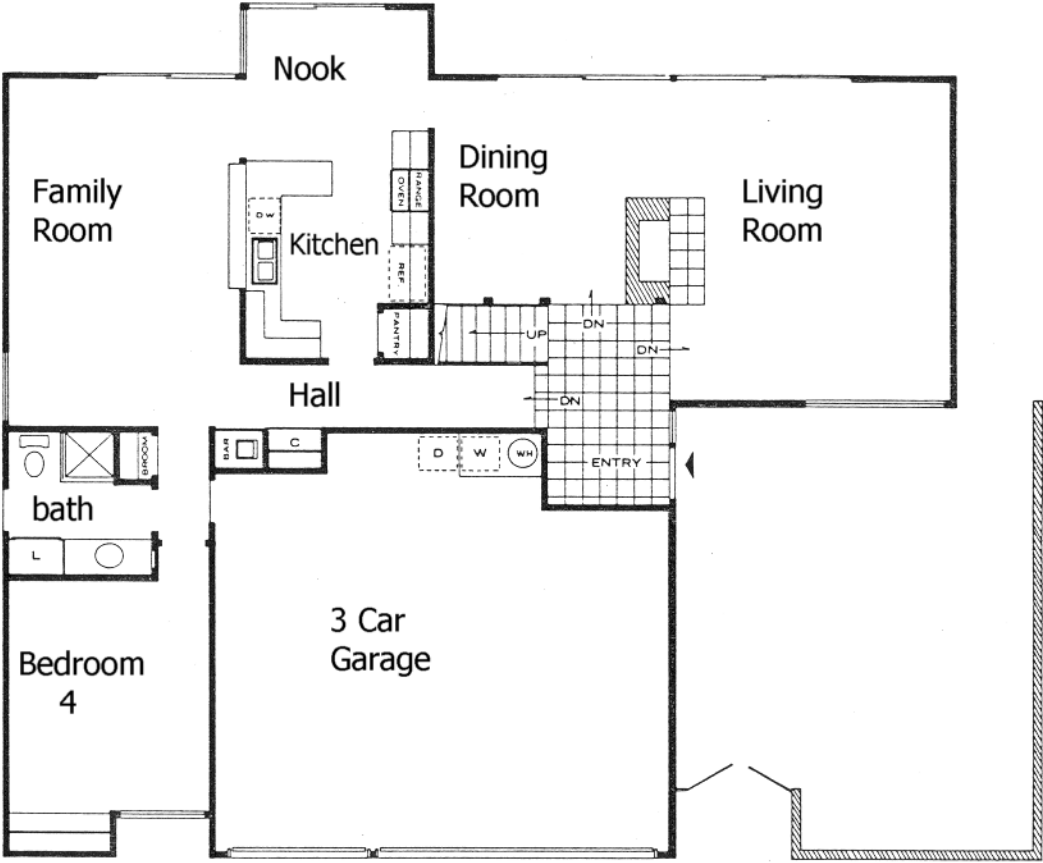
Architectural Design by R. J. Marvick & Associates

Mayfair Home Series Plan 7-A

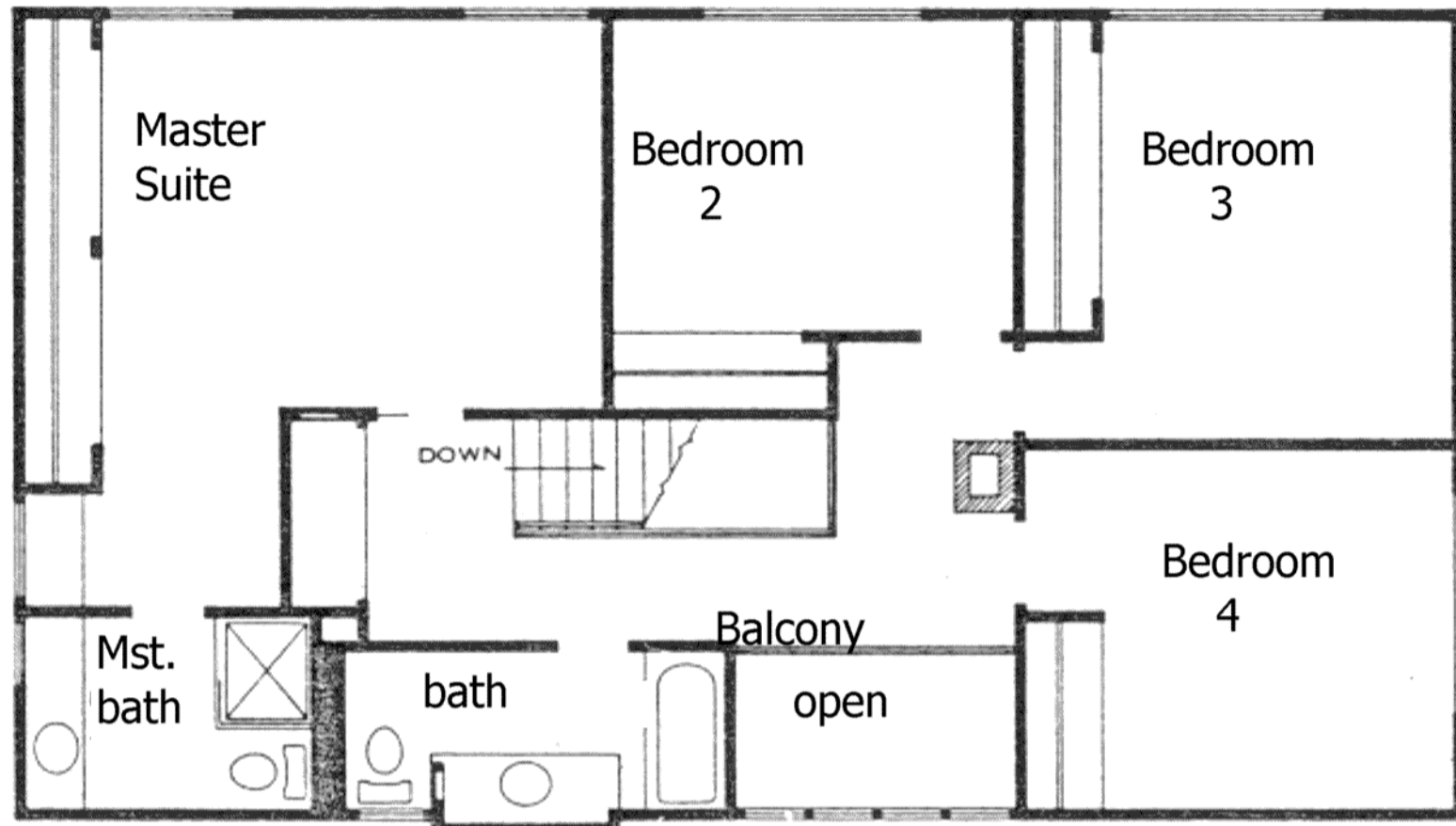


PLAN 7

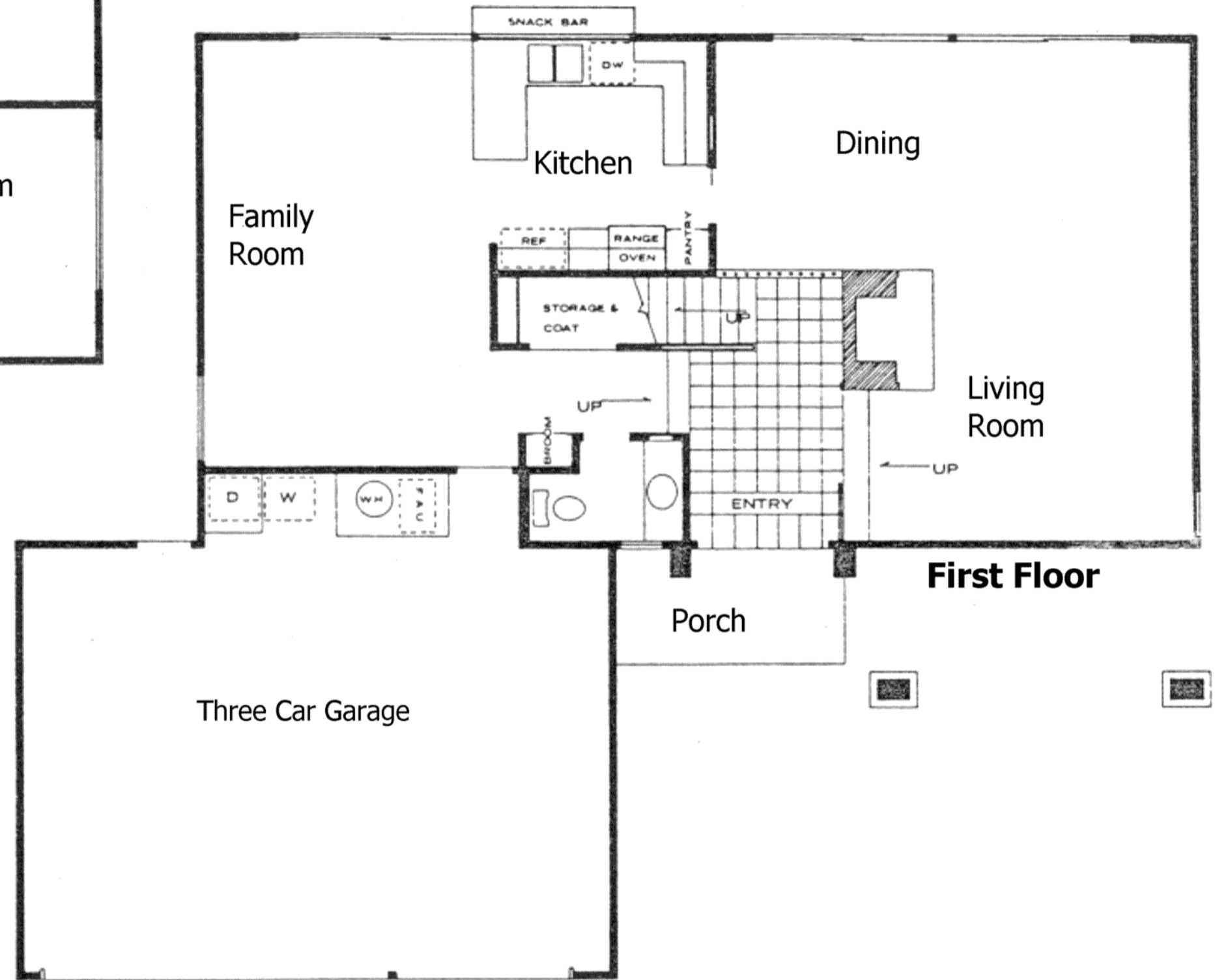
Approximately 2405 sq. ft. Living Area



First Floor



Second Floor



First Floor

Mayfair Home Series

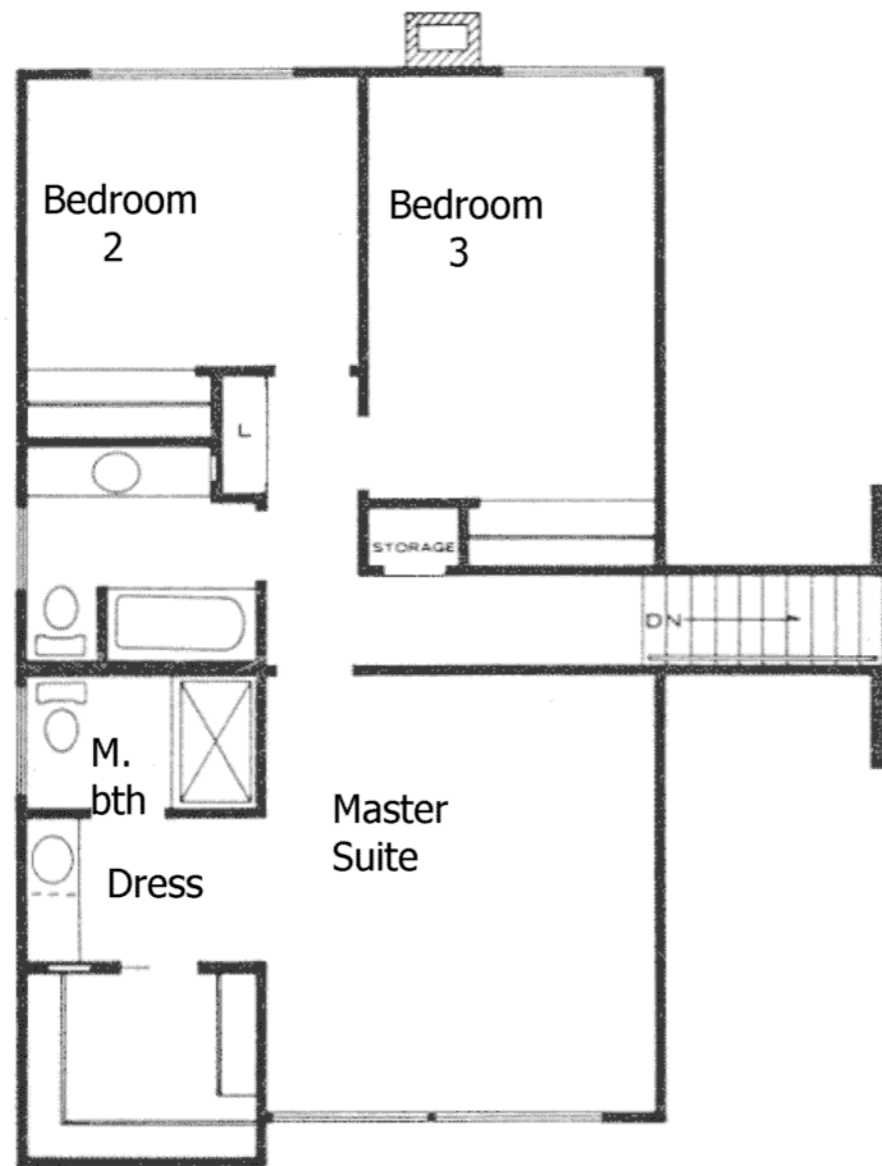
PLAN 6

Approximately 2228 sq. ft. Living Area

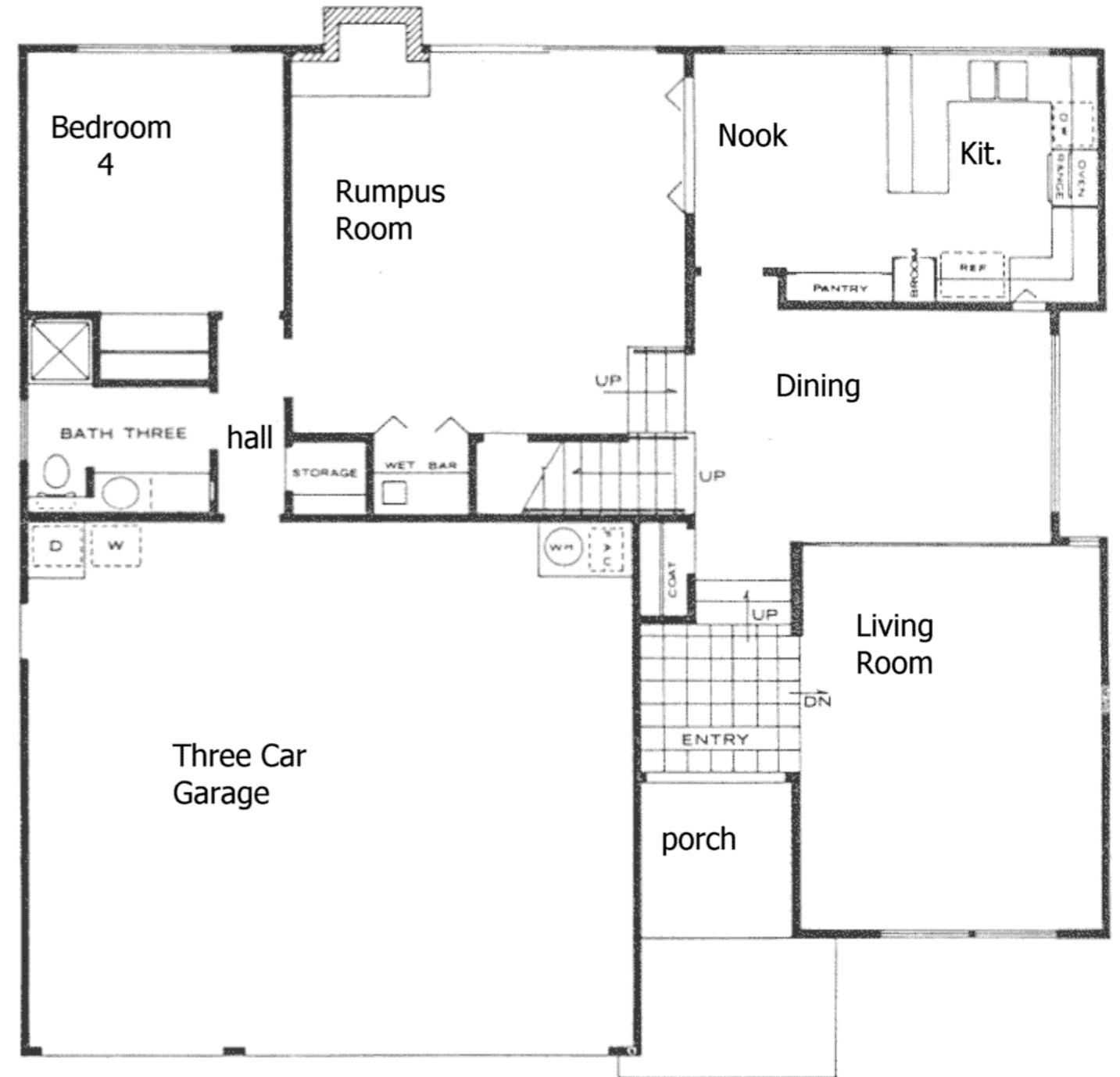
MAYFAIR HOMES Must Reserve The Right To Make Modifications As Deemed Necessary.

All plans copyrighted

Architectural Design By R. J. Marvick & Associates



Second Floor



First Floor

Mayfair Home Series

PLAN 5

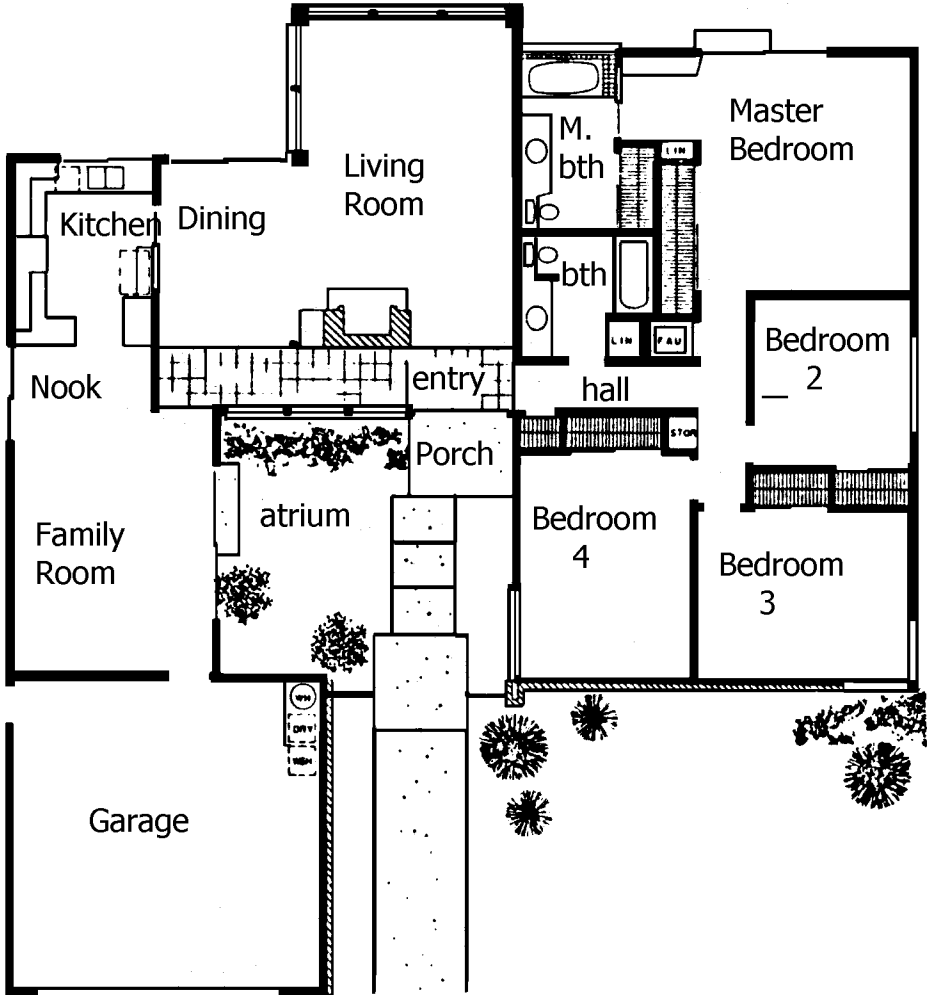
Approximately 2300 sq. ft. Living Area

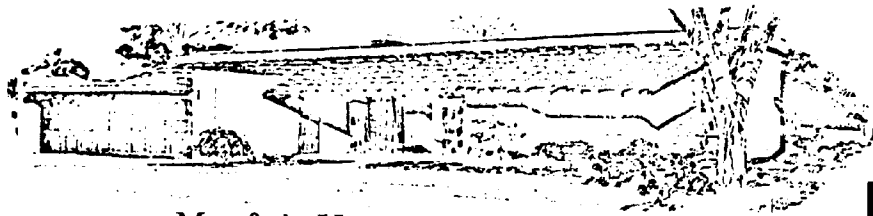
MAYFAIR HOMES Must Reserve The Right To Make Modifications As Deemed Necessary.

Foxmoor Homes

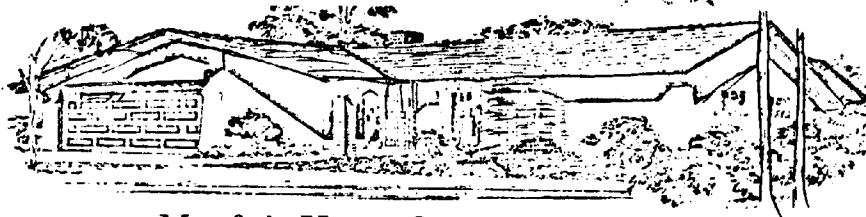
PLAN 2

Approximately 2048 sq. ft. Living Area





Mayfair Home Series PLAN 1-C



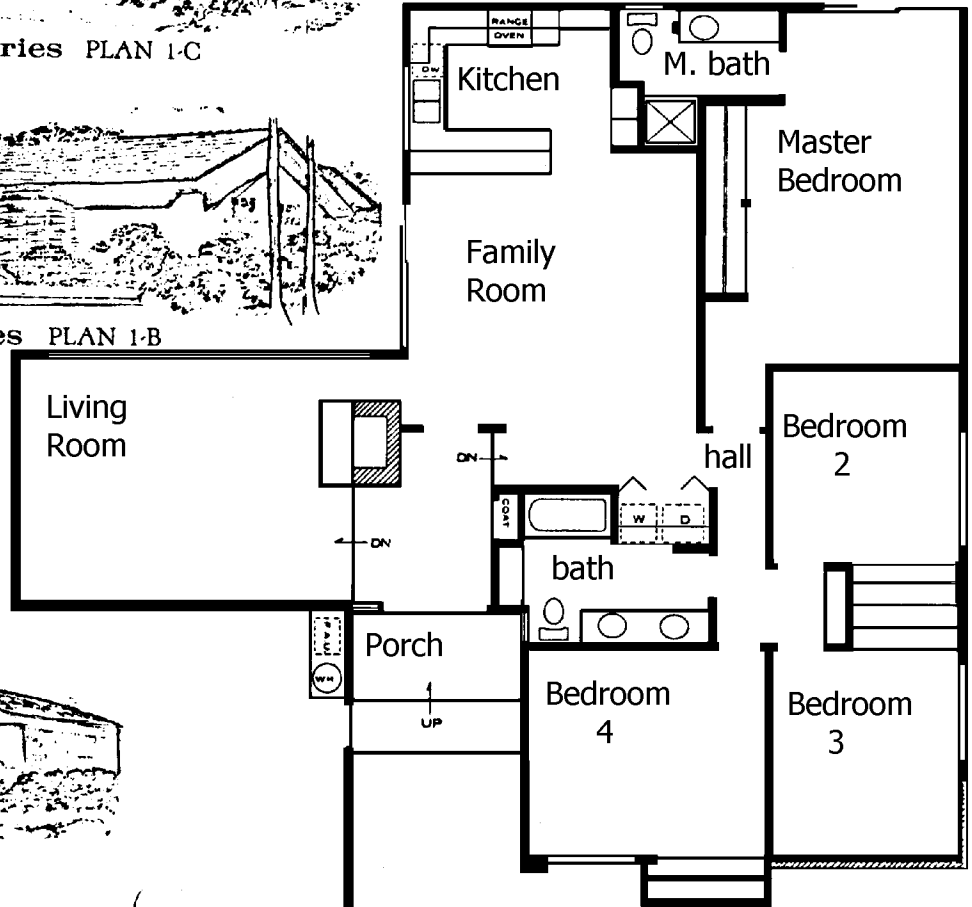
Mayfair Home Series PLAN 1-B

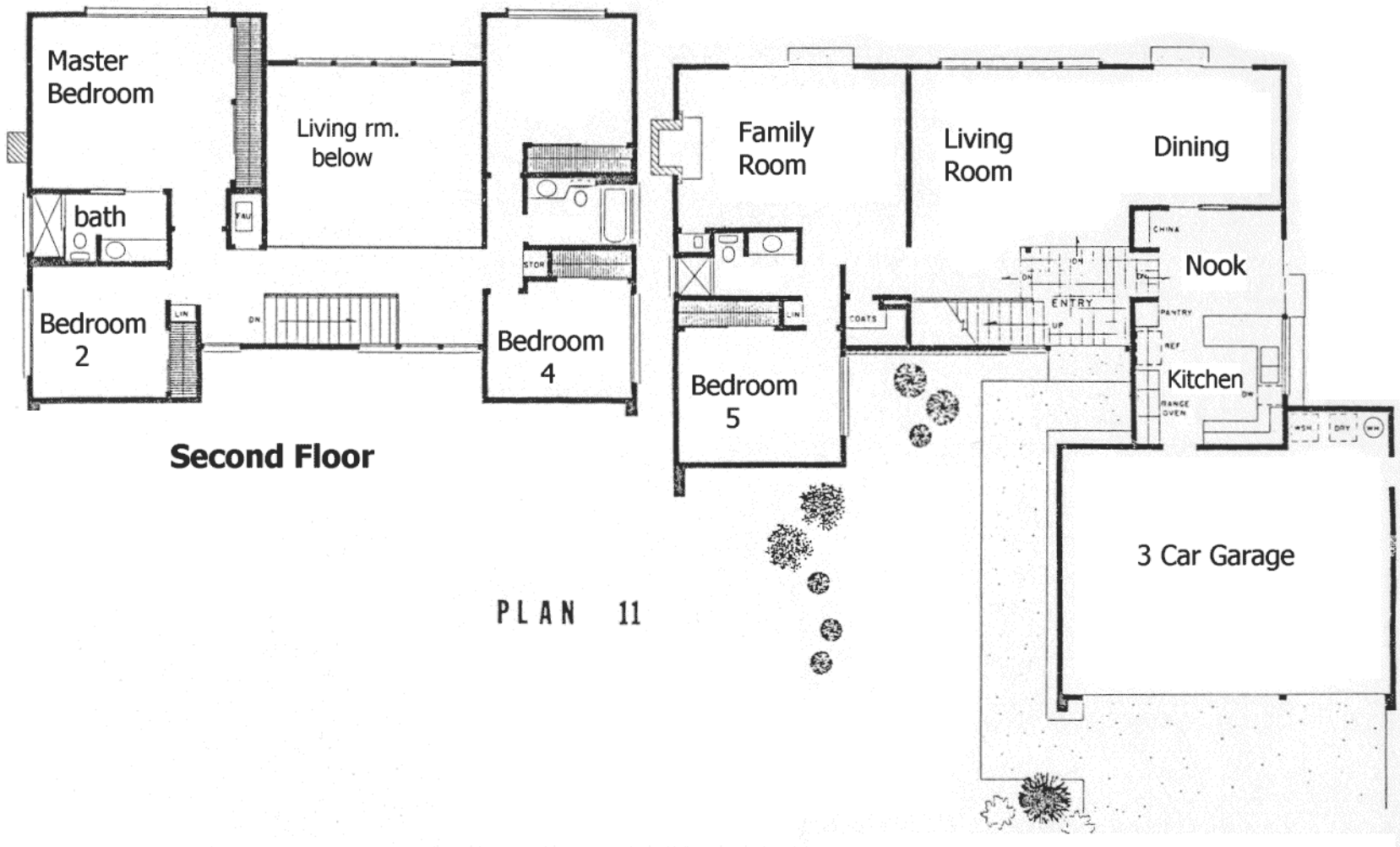


Mayfair Home Series PLAN 1-A

PLAN 1

Approximately 1879 sq. ft. Living Area





Second Floor

PLAN 11

Mayfair Homes, Foxmoor Hills

PLAN 11

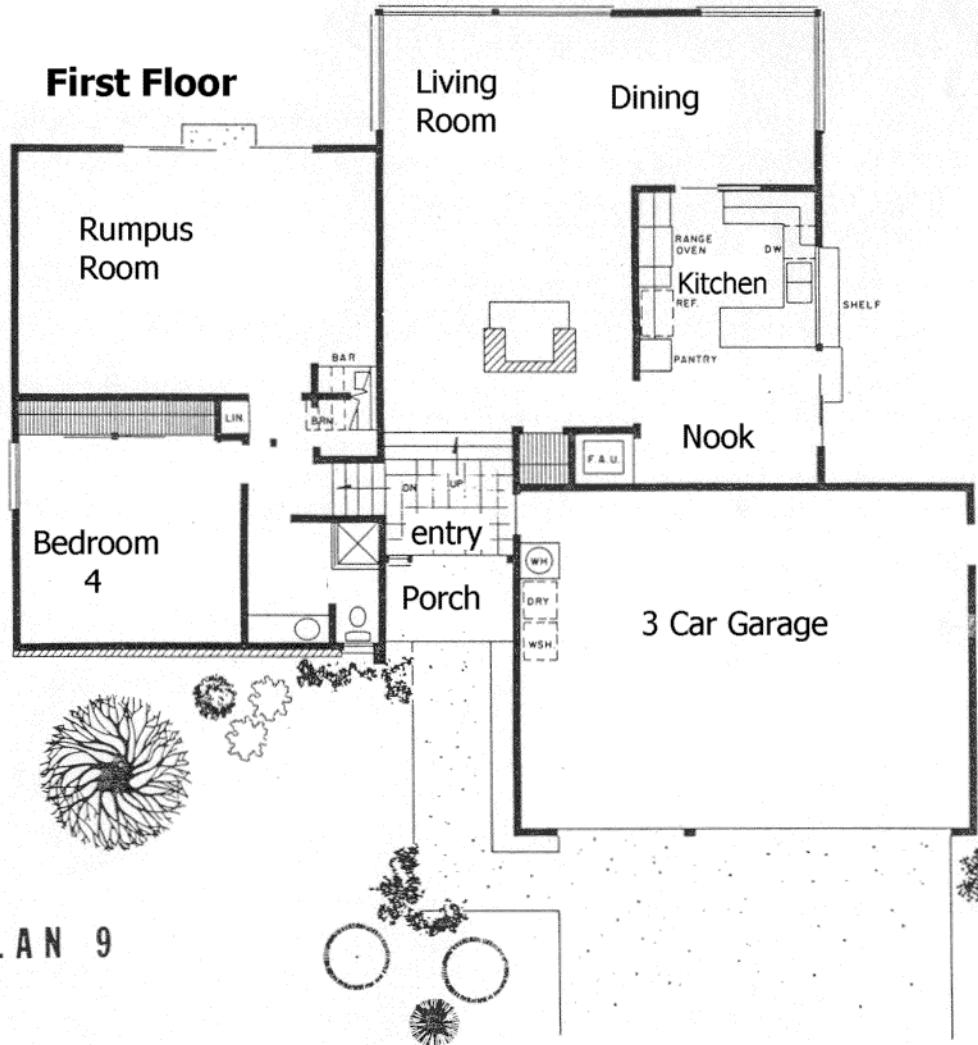
Approximately 2470 sq. ft. Living Area

MAYFAIR HOMES Must ve The Right To Make Modifications As Deemed Necessary.

Architectural Design by R. J. Maryvick & Associates



Second Floor



First Floor

PLAN 9

Mayfair Homes, Foxmoor Hills

PLAN 9

Approximately 2365 sq. ft. Living Area

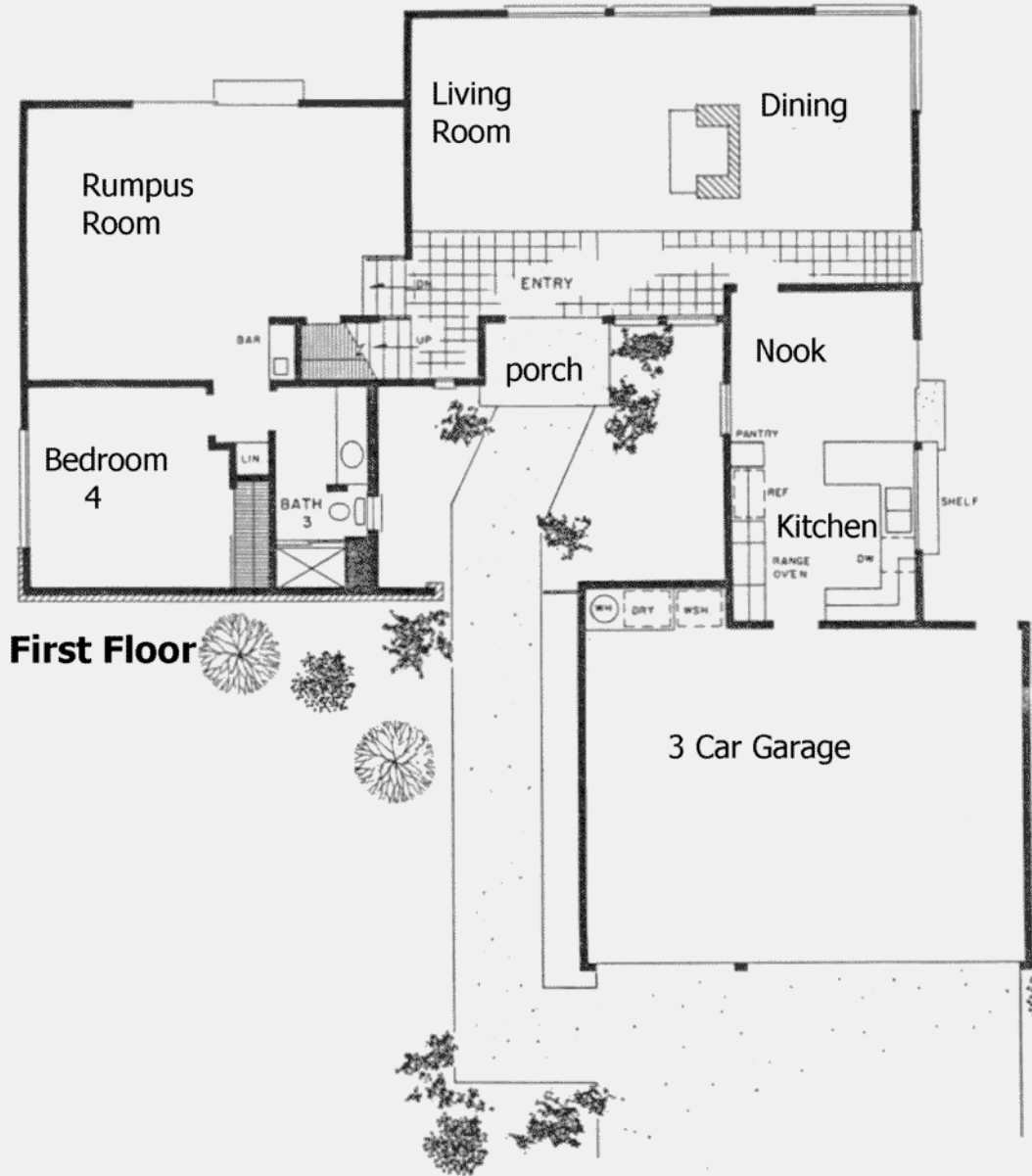
MAYFAIR HOMES Must give The Right To Make Modifications As Deemed Necessary.

All plans copyrighted

Architectural Design by R. J. Marvick & Associates



Second Floor



First Floor

PLAN 8

Mayfair Homes, Foxmoor Hills

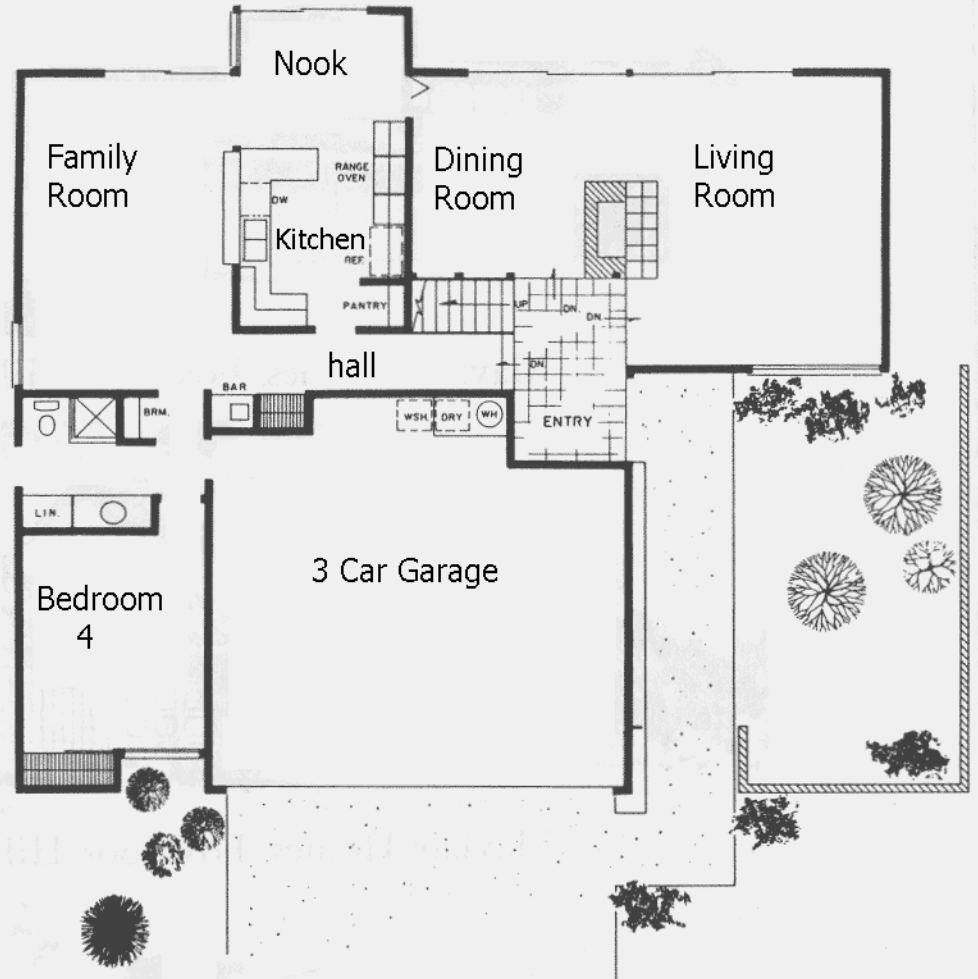
PLAN 8

Approximately 2260 sq. ft. Living Area

MAYFAIR HOMES Must Provide The Right To Make Modifications As Deemed Necessary.

All plans copyrighted

Architectural Design by R. J. Marvick & Associates



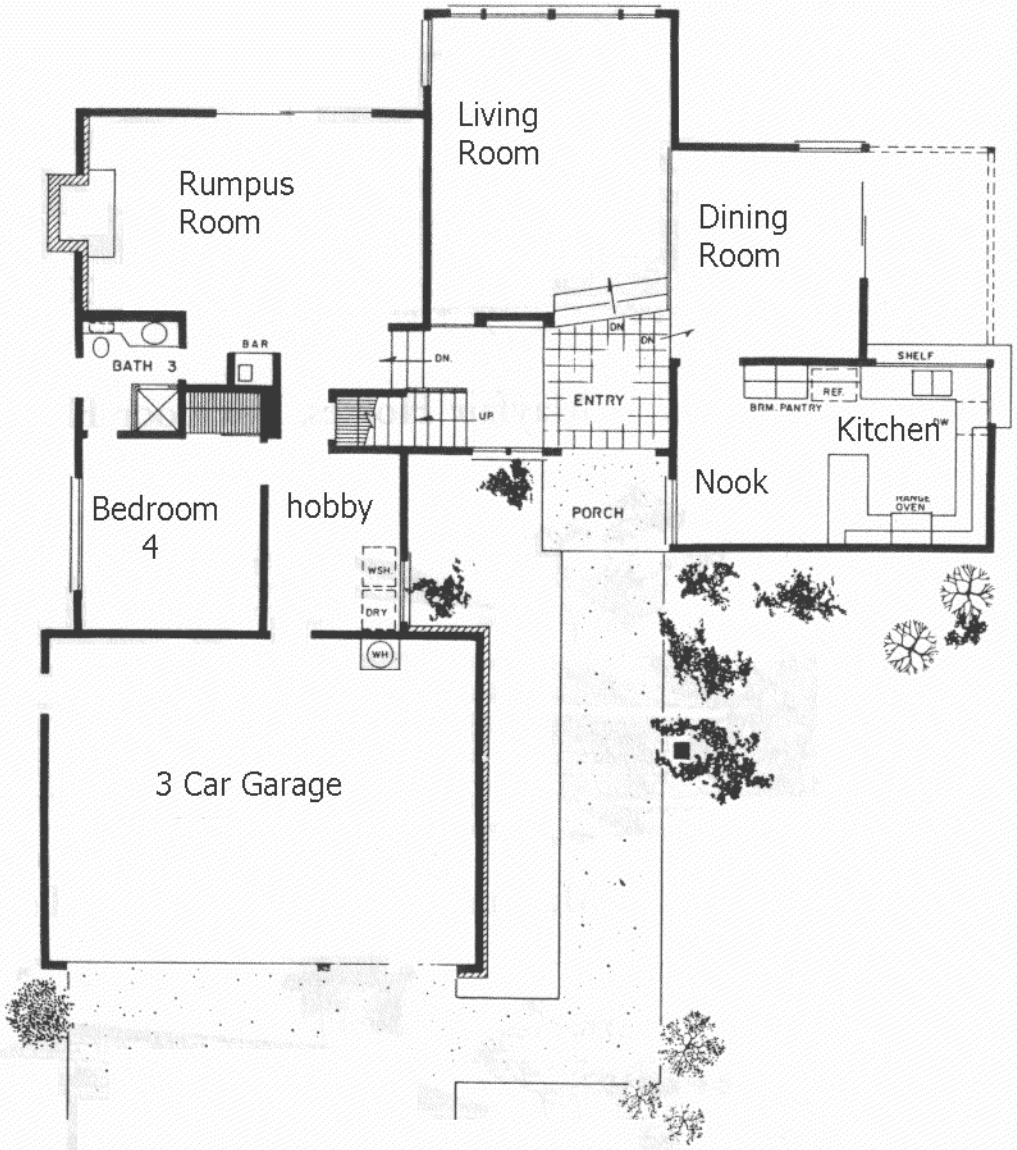
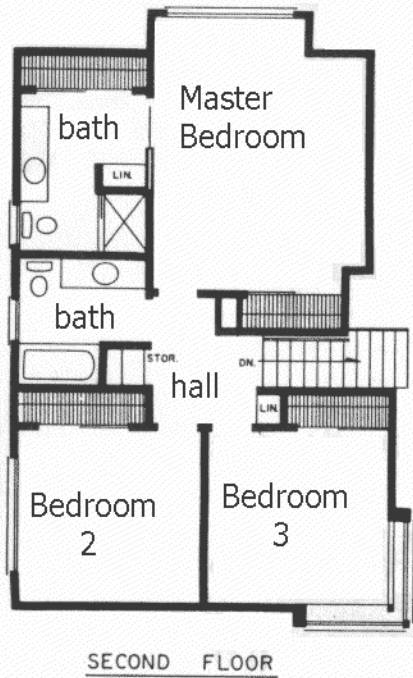
PLAN 7

Approximately 2405 sq. ft. Living Area

MAYFAIR HOMES Must Reserve The Right To Make Modifications As Deemed Necessary.

Mayfair Homes, Foxmoor Hills





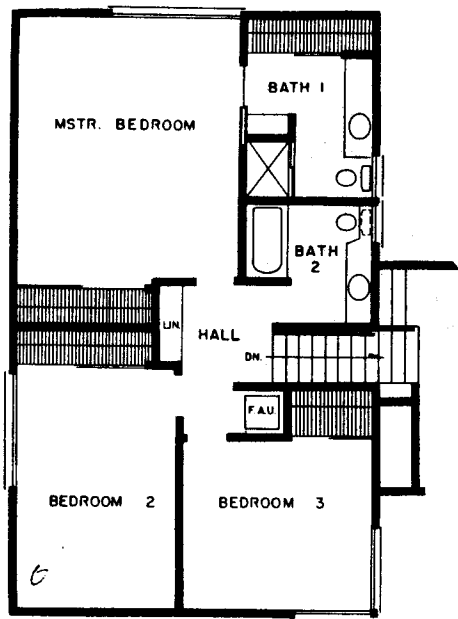
PLAN 4

Approximately 2396 sq. ft. Living Area

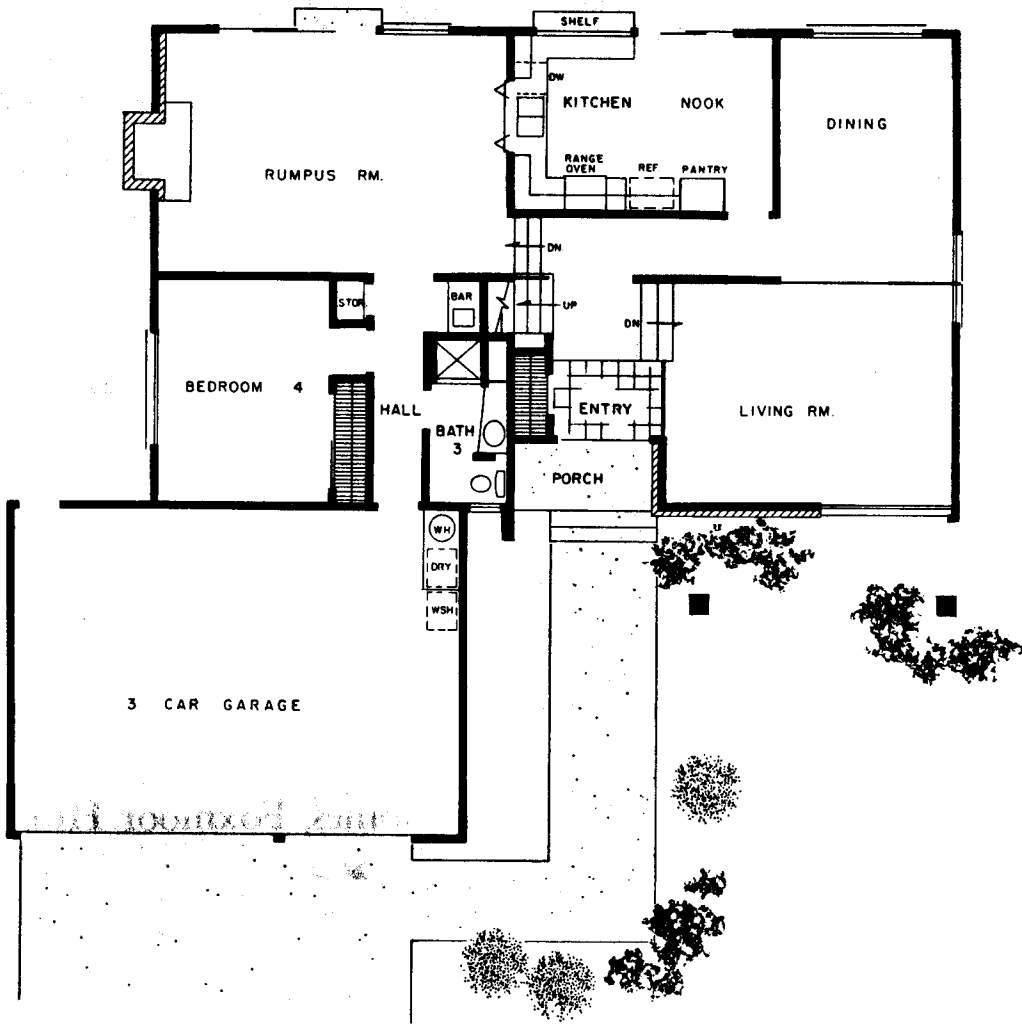
MAYFAIR HOMES Must Reserve The Right To Make Modifications As Deemed Necessary.

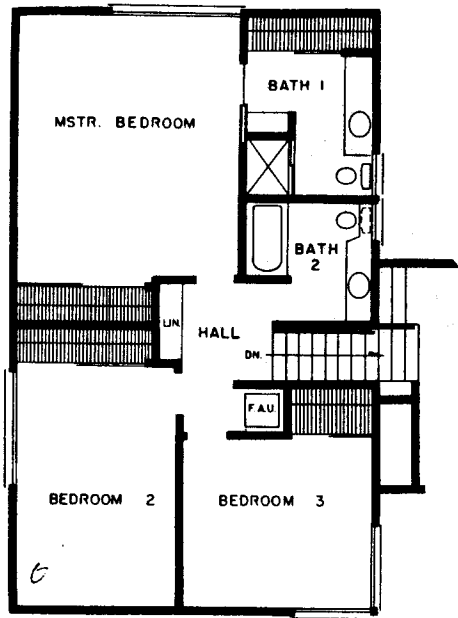
Mayfair Homes, Foxmoor Hills



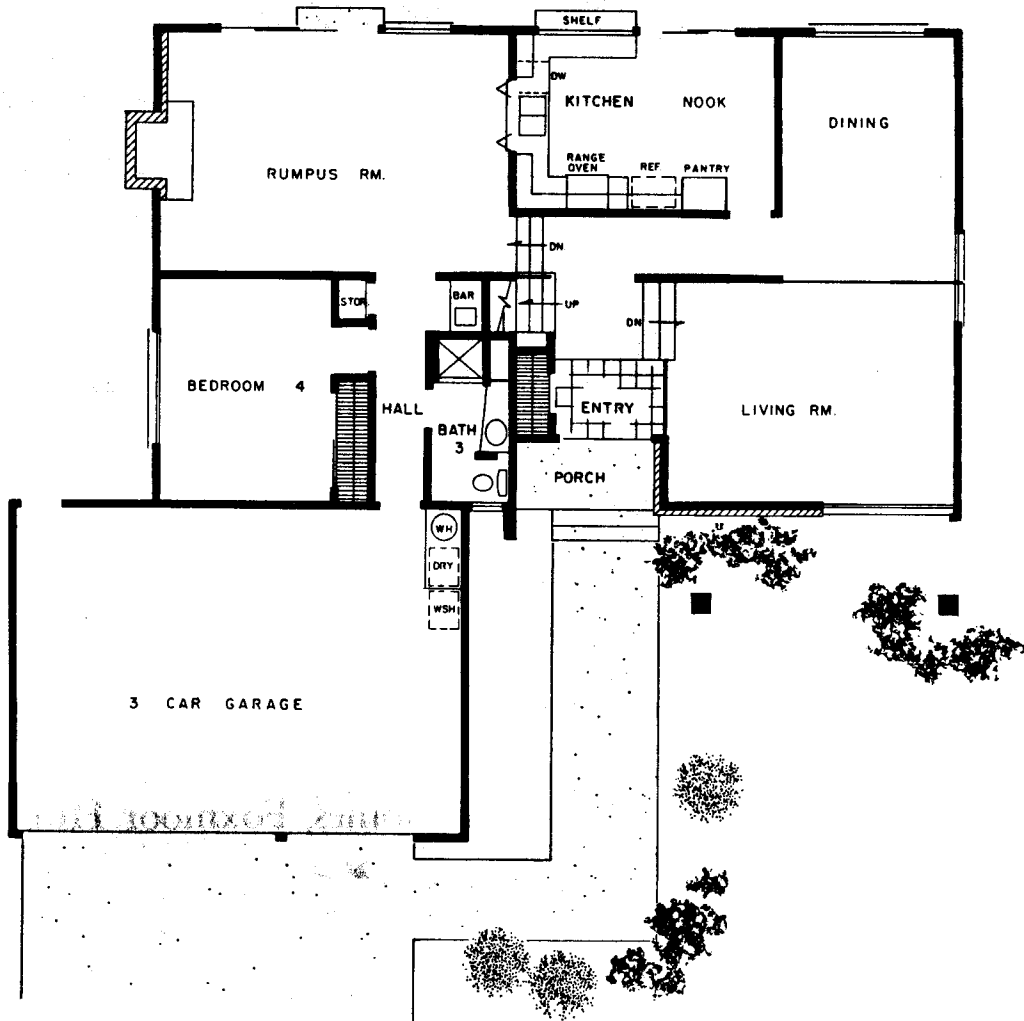


SECOND FLOOR





SECOND FLOOR



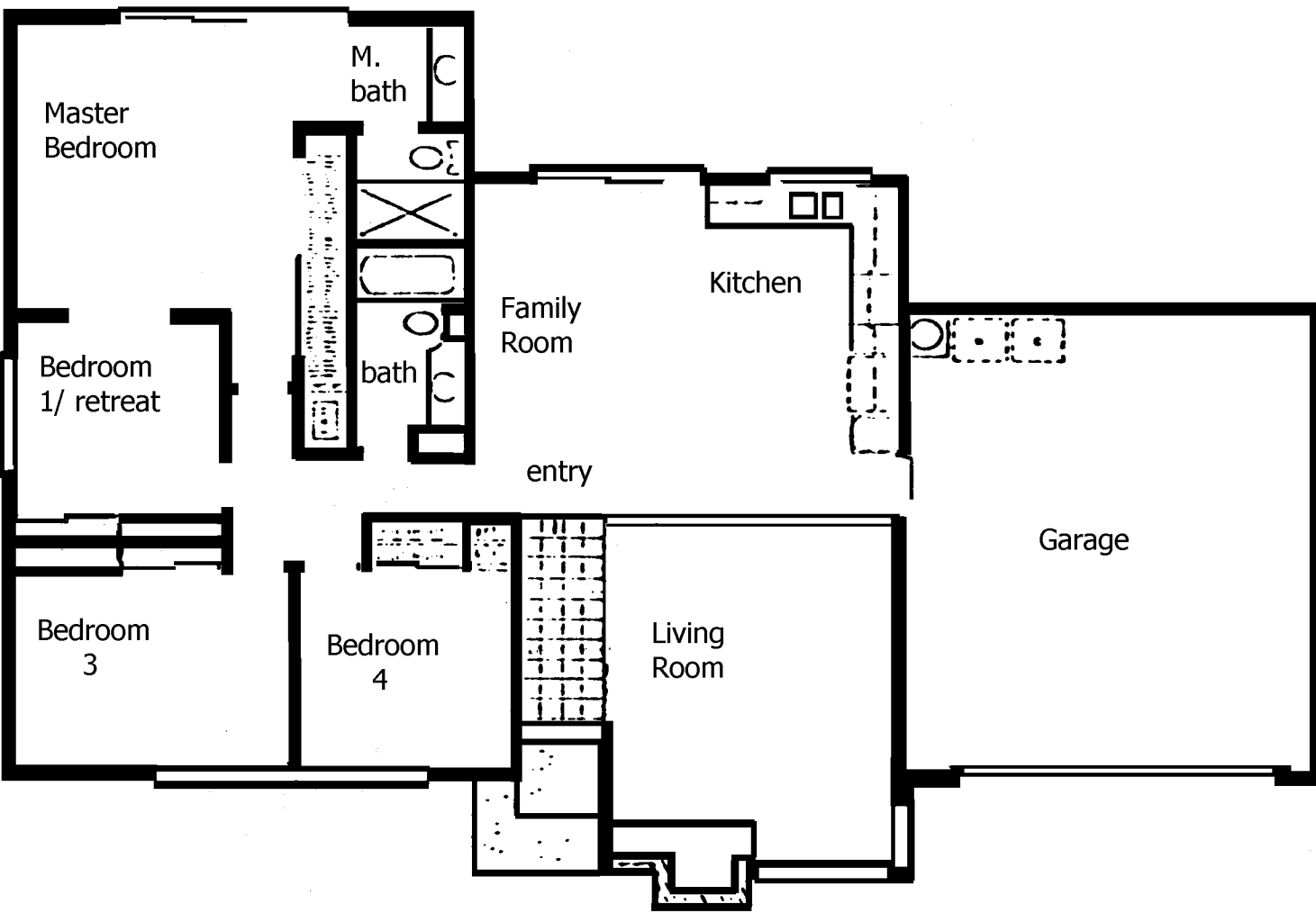
WINDY HILL Estates

PLAN 60

Four Bedrooms • Two Baths • Fireplace • Family Room • Master Suite with Separate Retreat • Two-Car Garage with Indoor Access

From the vaulted, tiled entry, step into a new level of elegance. This is a spacious, gracious home, complete with comforts and conveniences: a spacious living room with fireplace; a Country Kitchen and family room with sliding patio door. Even an option to use one of the four bedrooms as a quiet retreat since it adjoins the master suite. If you love being special, you enjoy the way this home gives you that good feeling!

Plan 60

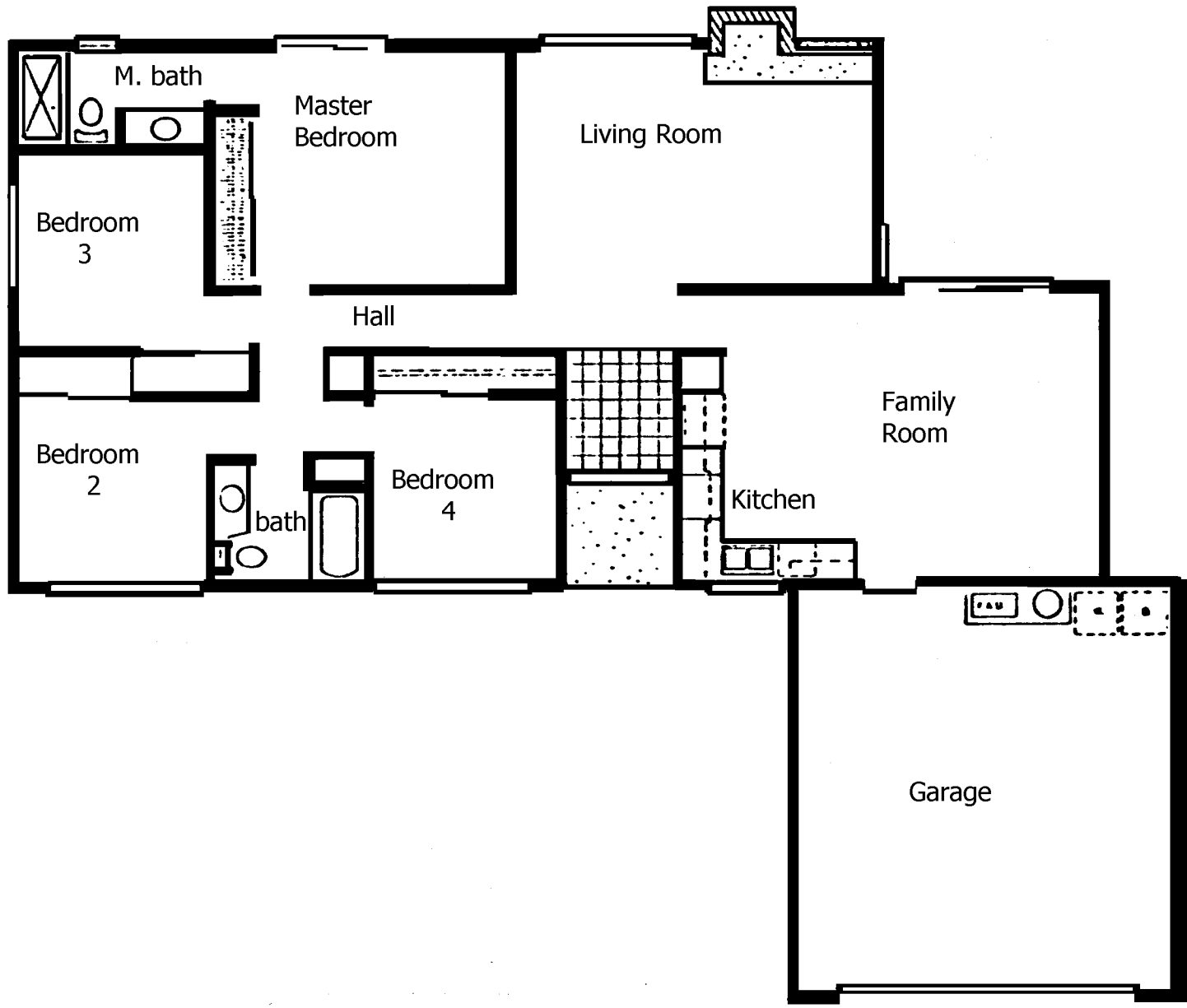


PLAN 44

Four Bedrooms • Two Baths • Fireplace • Family Room
Master Suite • Two-Car Garage with Indoor Access

Here's a wide, well-planned home your family won't outgrow. Four spacious bedrooms and a roomy Country Kitchen that joins with a pleasant family room for good food and good company. The vaulted ceiling living room has a broad, welcoming fireplace wall for cheerful evenings. The master suite has its own private bath as well as sliding glass doors to the garden area. If you're moving up to more living, this is the home that will provide

Plan 44



Three Bedrooms • Two Baths • Fireplace •
Master Suite • Two-Car Garage with Indoor

Whatever your ideas, this imaginative floorplan is
your family's individuality. Each room has something
to offer—the living room with its friendly fireplace,
a dining area full of natural light, the kitchen with
nook, the master bedroom complemented
by walk-in closet, dressing-vanity and master bath.
The second bedroom has its own bath and the third can
be converted to a den/study or sewing room, yet is
ready for guest arrival in moments. A home
with potential, just waiting for your imagination
to work wonders!

Plan 35

