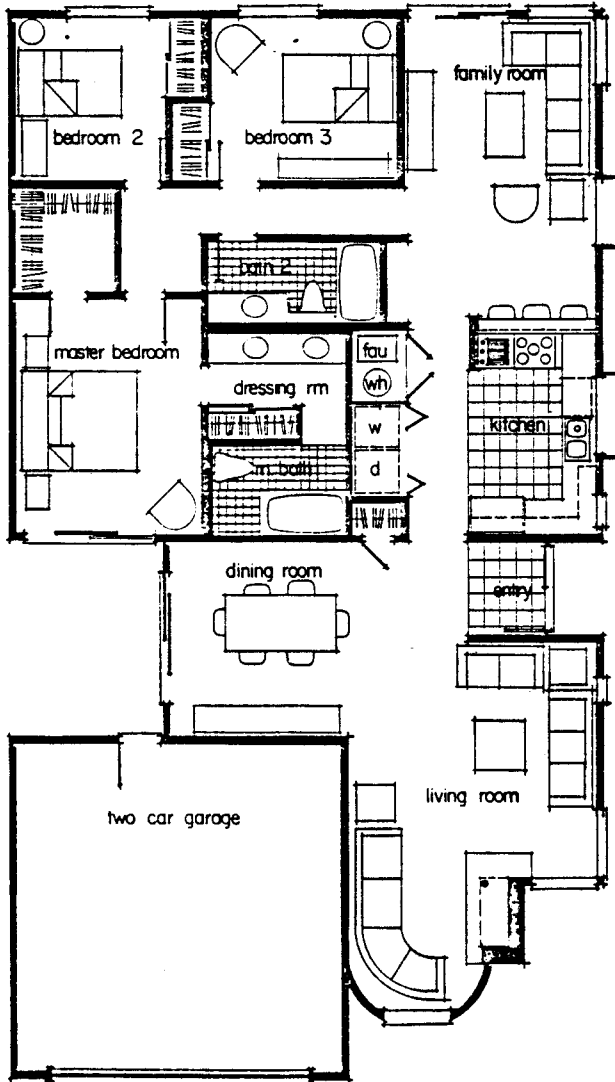


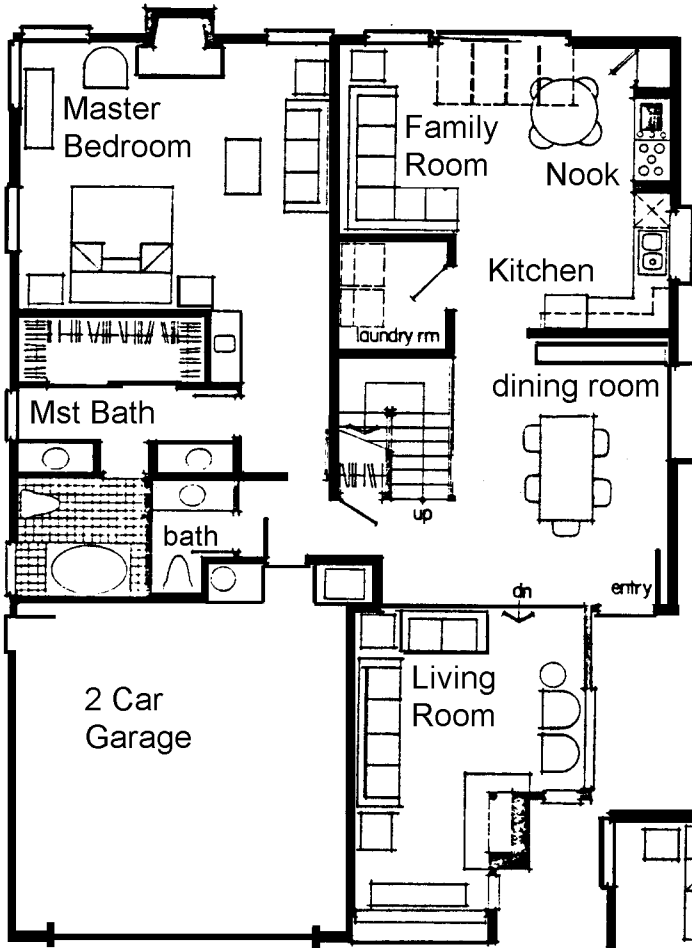
The Fontainebleau




Chateau Springs

Executive Series

The Versailles

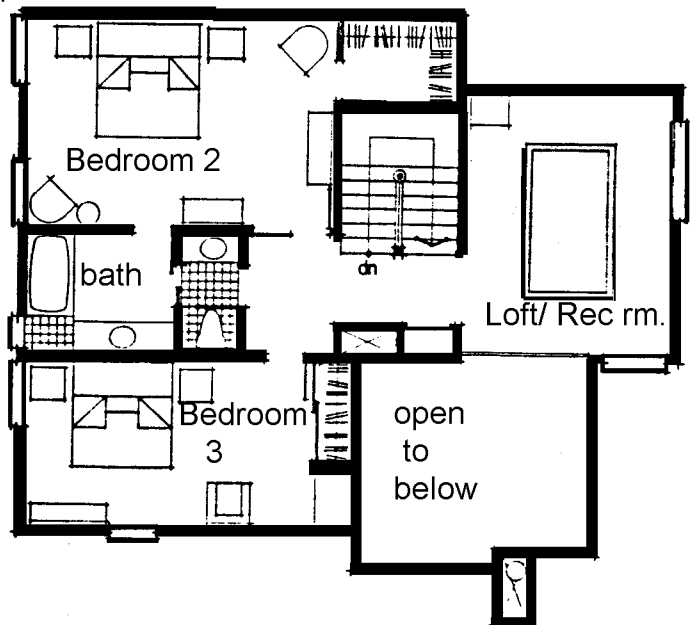


The Versailles brings to the sophisticated buyer luxury in a unique two-level home. This home is designed for a growing family's needs. Its potential for expansion is accented by a loft/recreational room on the upper level. Here, you may add sleeping or recreational furniture to suit your specific needs.

From the spacious dining room you step up to the corner fireplace and cathedral ceiling of the living room. To the opposite end of the dining room is the open kitchen surrounded by nook and family room. Thus, it is not only convenient for serving but for socializing while preparing handy meals or snacks. Also near the kitchen is a separate laundry.

Almost a third of the first floor is devoted to the master suite with its private fireplace and personal lounge area. Pamper yourself in the master bath — it's unbelievably luxurious.

Upstairs you'll discover two more bedrooms, a bath and that multi-purpose loft. Children have ample room for studies and play when you move up to the Versailles. But, don't forget the parents — their suite is a private retreat.

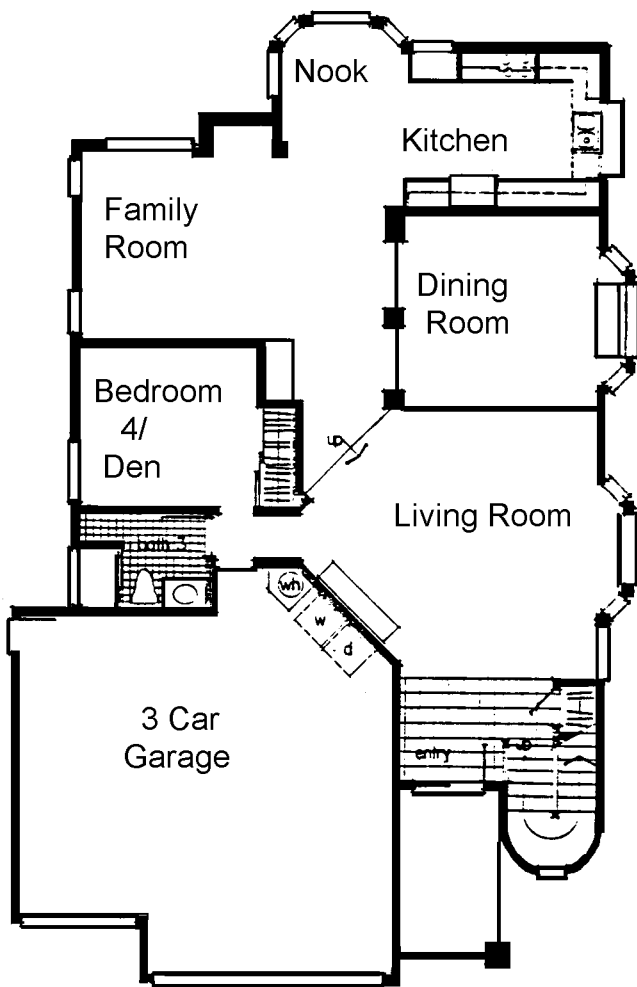
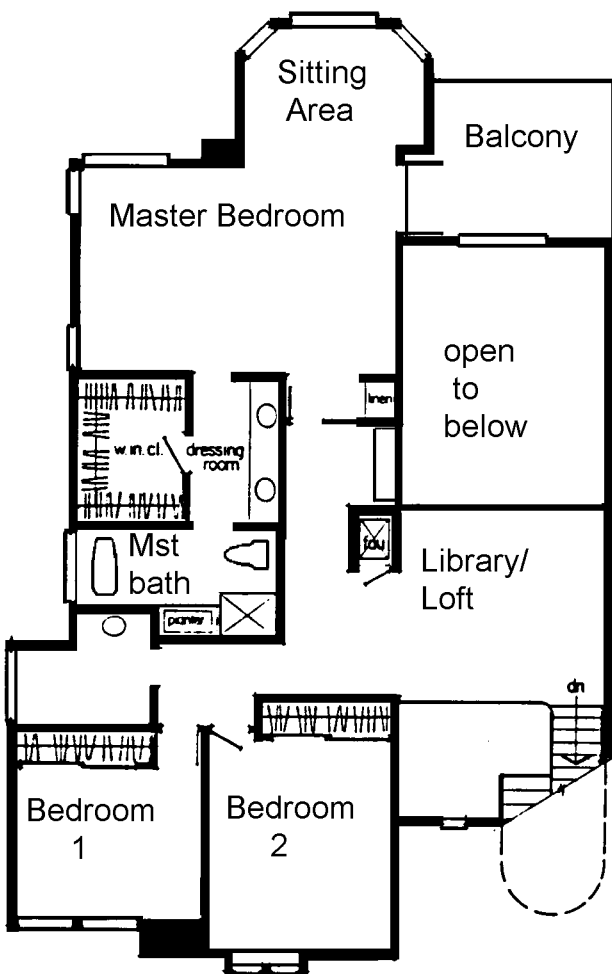



Chateau Springs
Executive Series

The Orleans

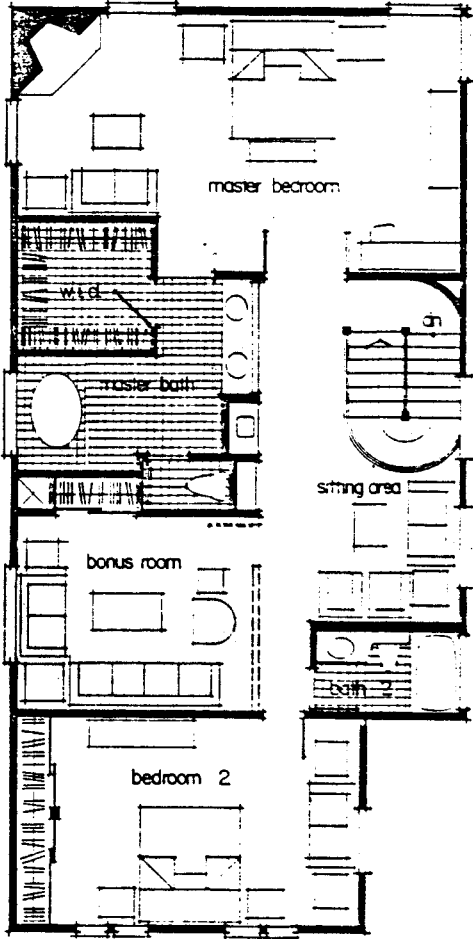
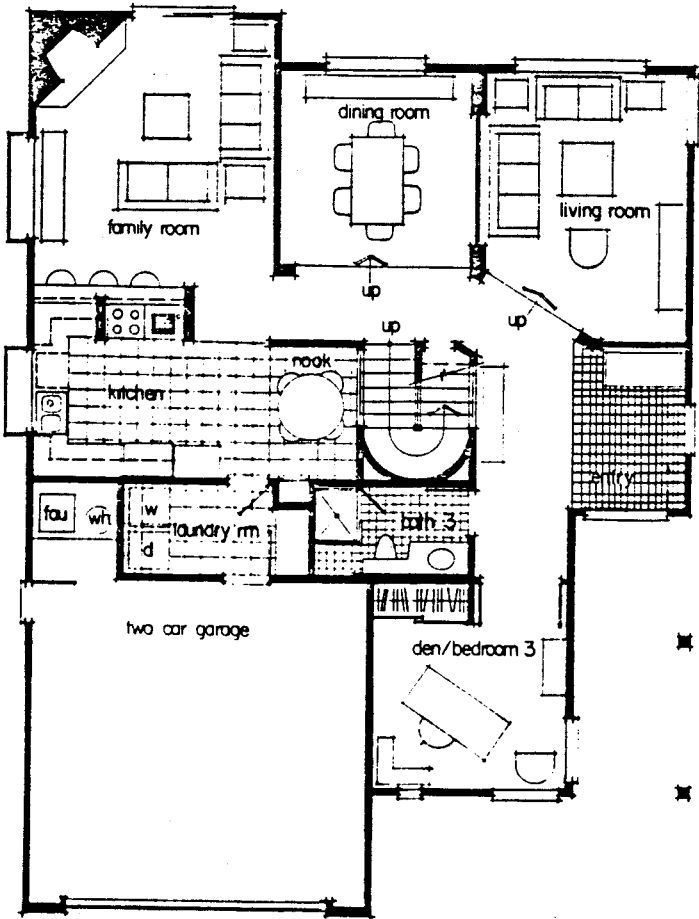
A prominent Los Angeles designer took one look at the plans for the Orleans and said, "These are the most imaginative I have ever seen." Your reaction will be the same as you enter its warm and spacious rooms, and uniquely designed living room. The dining room ceiling soars two stories high to give that regal feeling while entertaining formally. The family room enjoys a wood-burning fireplace and is conveniently situated by the gourmet kitchen and nook. A den with adjoining bath may also serve as a fourth bedroom.

On the second floor are a master suite, two bedrooms, two baths and library/loft. But, the master suite is a real show-stopper. It not only enjoys a private bath with separate shower and tub, but boasts a dressing area, walk-in closet, separate sitting area and private balcony. Surelv, it was this suite that captured the imagination of the Los Angeles designer. It will capture yours too.




Chateau Springs
Executive Series

The Normandy




Chateau Springs
Executive Series

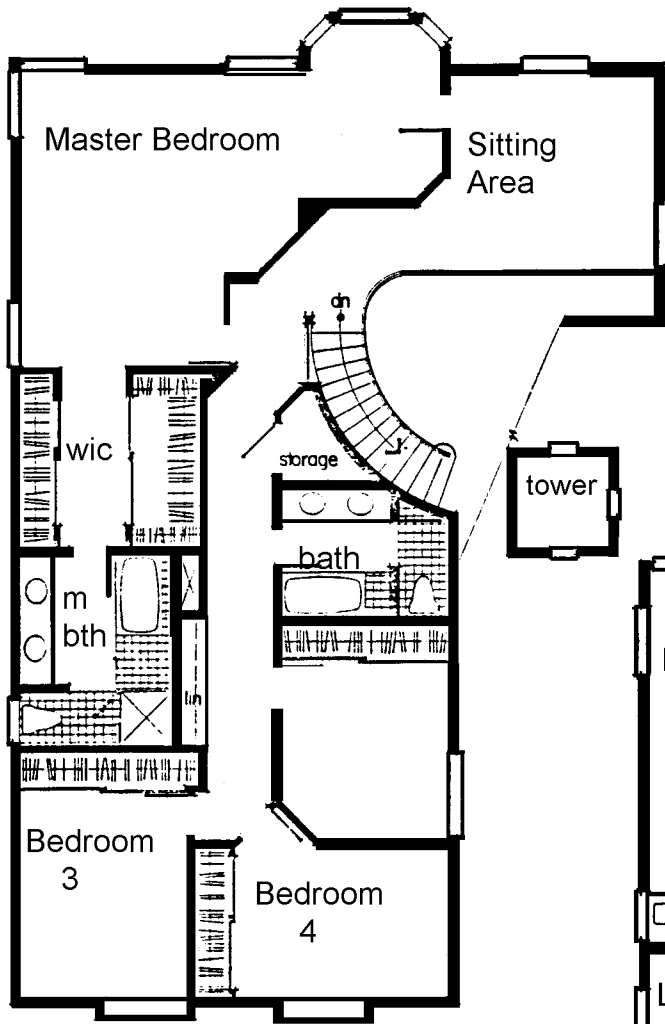
The Ile De France

An arresting meld of curves and angles create the provocative Ile De France's identity. Its timeless beauty will be yours in a choice of five exciting elevations.

The sweeping staircase is a classic and sure to bring compliments from visitors as you make your regal appearance, or sponsor the tossing of a bride's bouquet. You'll feel like royalty in the grandeur of your incomparable master suite, complete with walk-through closet, private bath, separate tub and shower, sitting area, and 180-degree-view retreat. Meals prepared in the well appointed kitchen may be enjoyed casually in the nook or served formally in the dining room beneath its vaulted ceiling.

You'll gain a four star reputation with refreshments served from your wet bar which boasts a cozy counter. The spacious family room is convenient to the bar for entertaining, and its woodburning fireplace invites you to relax by its sparkling embers.

For you, the connoisseur, the Ile De France is exclusively designed. It makes your statement — *the good life is enjoyed in this home.*



Chateau Springs

Executive Series



The Ile De France A

