



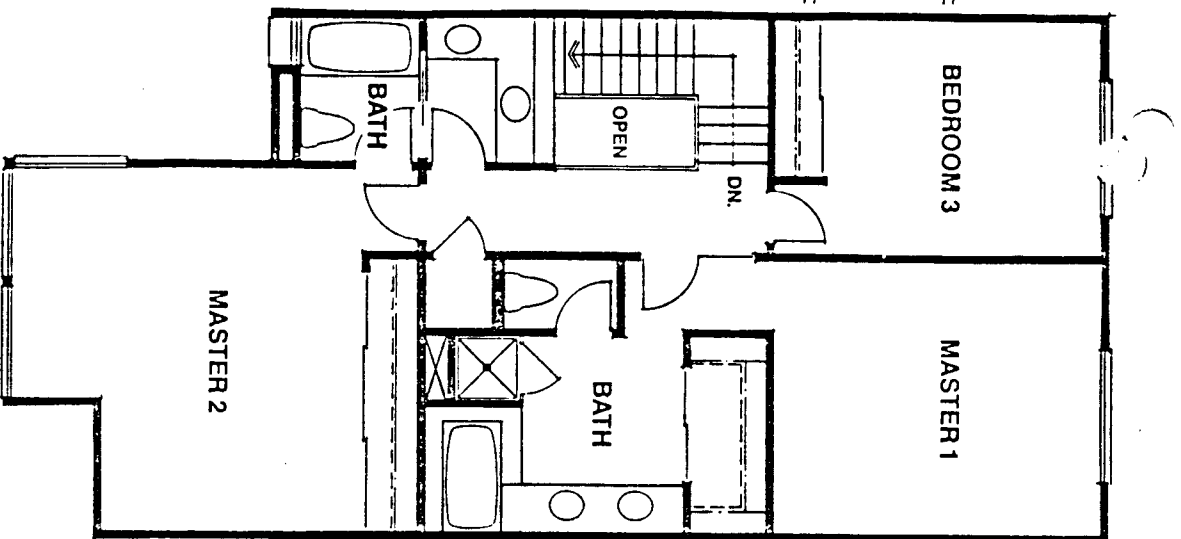
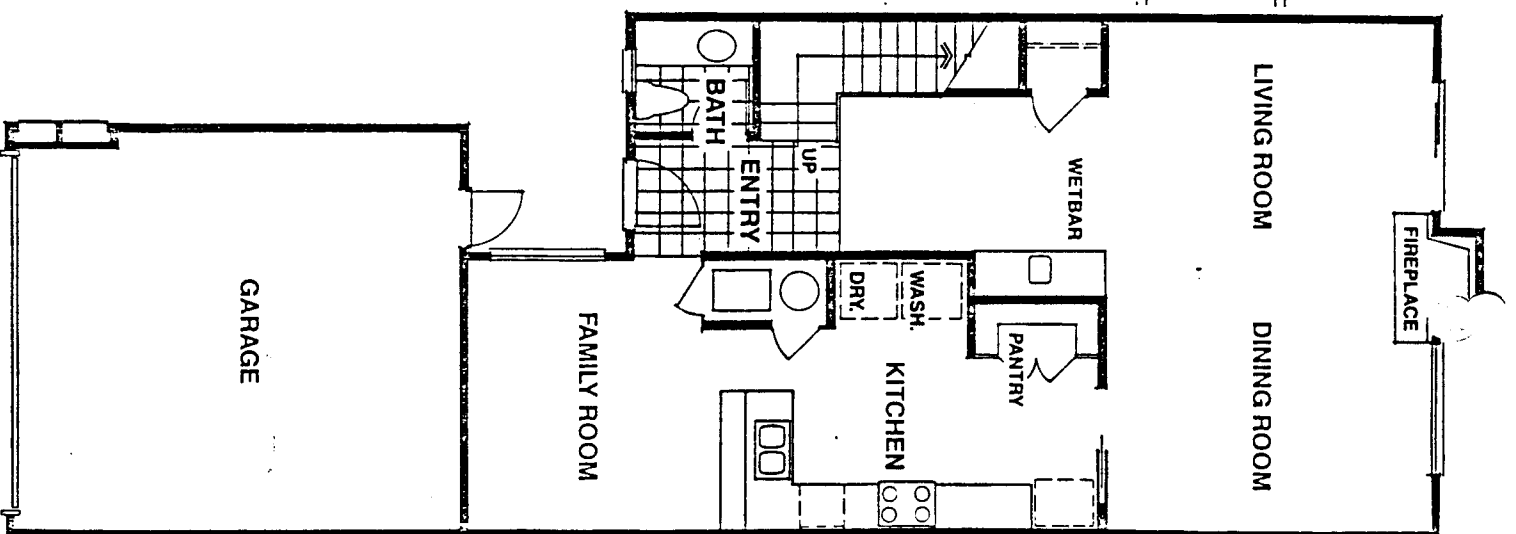
# Fontainebleau

## PLAN 1930

The emphasis is on family living and opportunities for gracious, Old World entertaining in this outstanding example of Dale Poe quality and innovation. Note the atrium which dominates the entryway and the huge living room-dining room combination, tied together by the warmth of a woodburning fireplace. There's a wet bar, of course, and a large, well-appointed gourmet kitchen which opens on to a spacious family room. And that is only the beginning.

Upstairs, two complete master suites, third bedroom and two complete baths. Loads of closet and storage space, too, for larger families.

Here is a home of quality deserving of your close and thoughtful inspection.



TRAC # 812 - phase 2

AG 9H



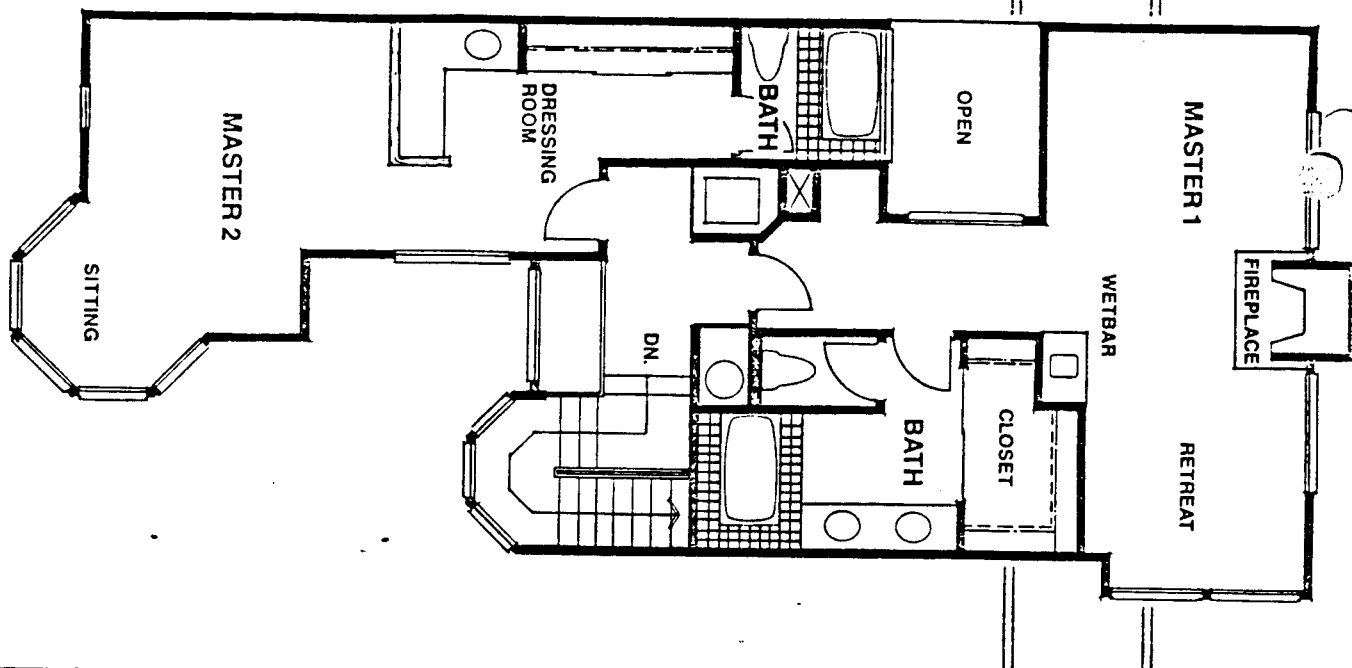
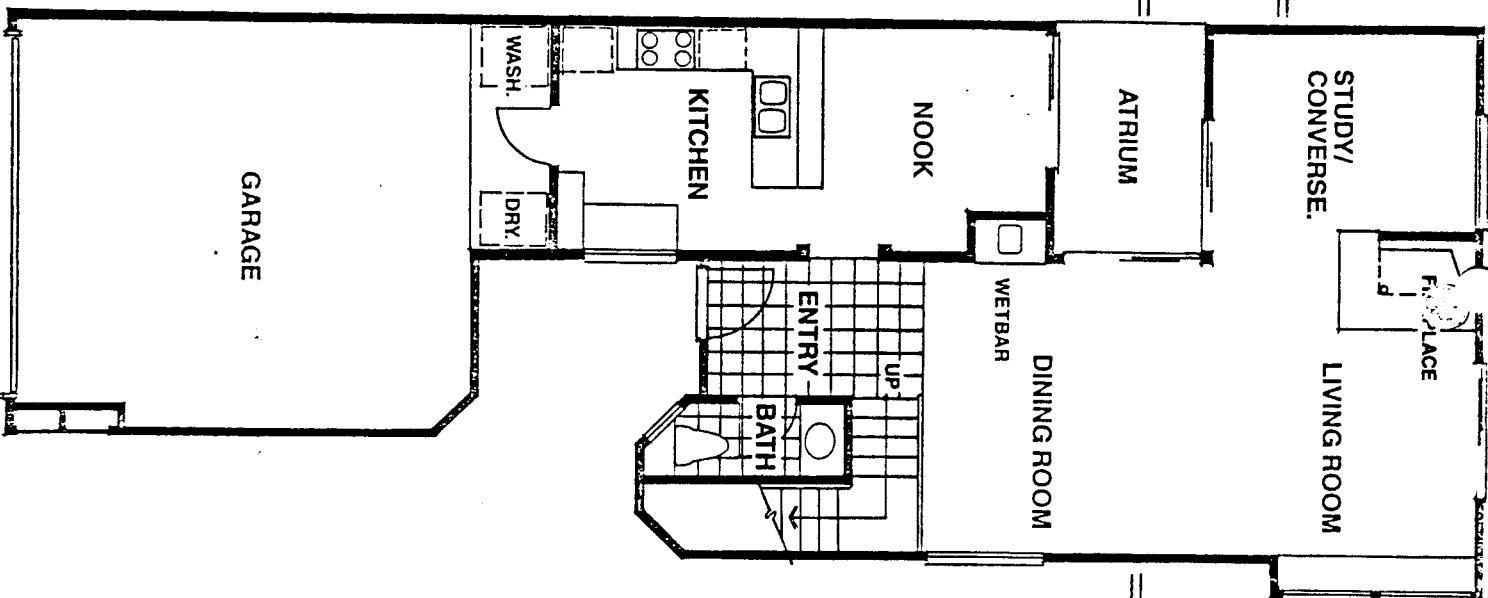
# Riviera

## PLAN 1850

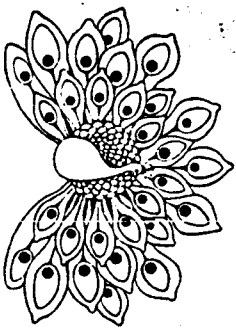
If you think this is an elegant reproduction of French Provincial style when you see the downstairs with its open-to-the-roof entryway, sun drenched atrium and the stylishly designed living room-study combination, and its kitchen, with family breakfast nook, wait until you mount the winding stairs.

Not one, but two, magnificently appointed master suites; one with its own fireplace and wet bar, plus a cozy sitting area; the other, almost equally large with a separate dressing area. Both have their own complete baths, of course.

This spacious masterpiece must be seen to be fully appreciated. It's typical of the timeless quality you expect from Dale Poe.



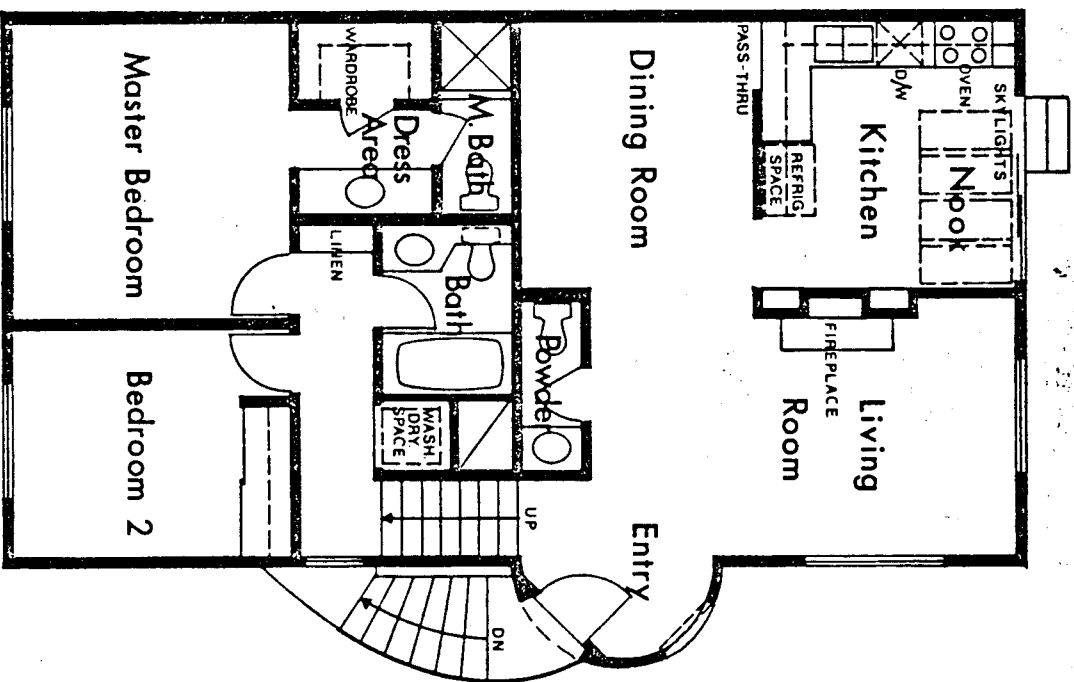
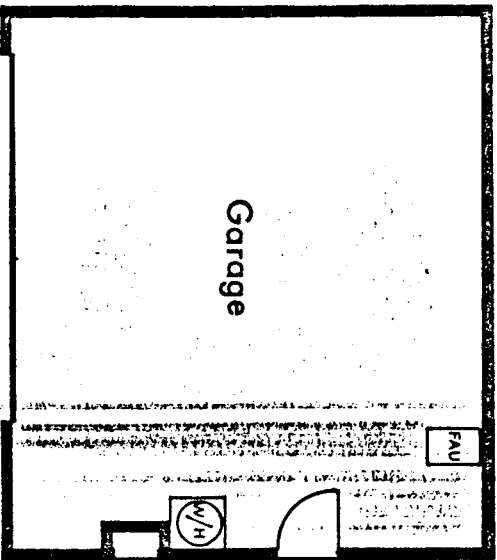
TRAPT #812 - Phase 2  
A G 9 F



1056K

The living room, with massive stone fireplace, offers a coziness hard to find. The master bedroom and bath are adjoined by a mirrored master closet. Luxurious living in the size of a home people are looking for.

Here is luxurious, comfortable living in a setting of magnificent French countryside. This rich, two bedroom, two and one-half bath home encompasses both spaciousness and the perfect blending of country elegance. The unique garden kitchen features a skylight and plenty of custom quality tile.



DALE POE DEVELOPMENT CORPORATION

TIMELESS QUALITY

In the interest of continuous improvement, modifications in plans, exterior design, materials and specifications may be made without notice at the sole discretion of the seller.



Chateau Park Technomex  
# # 813

AG 9 B

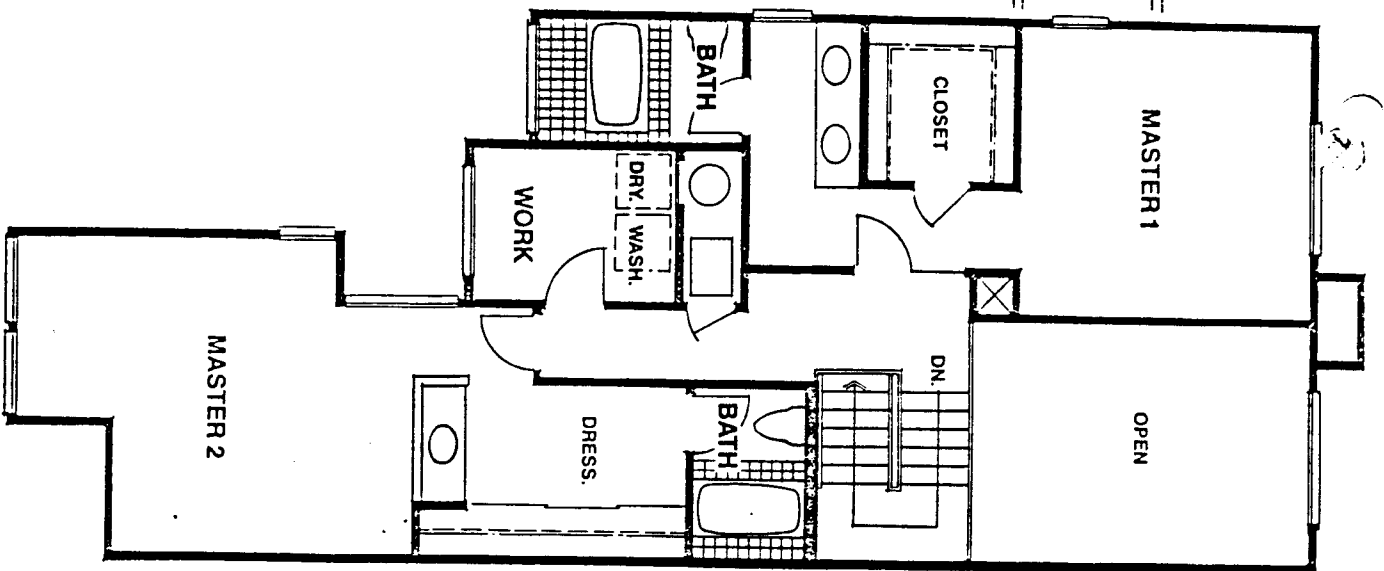
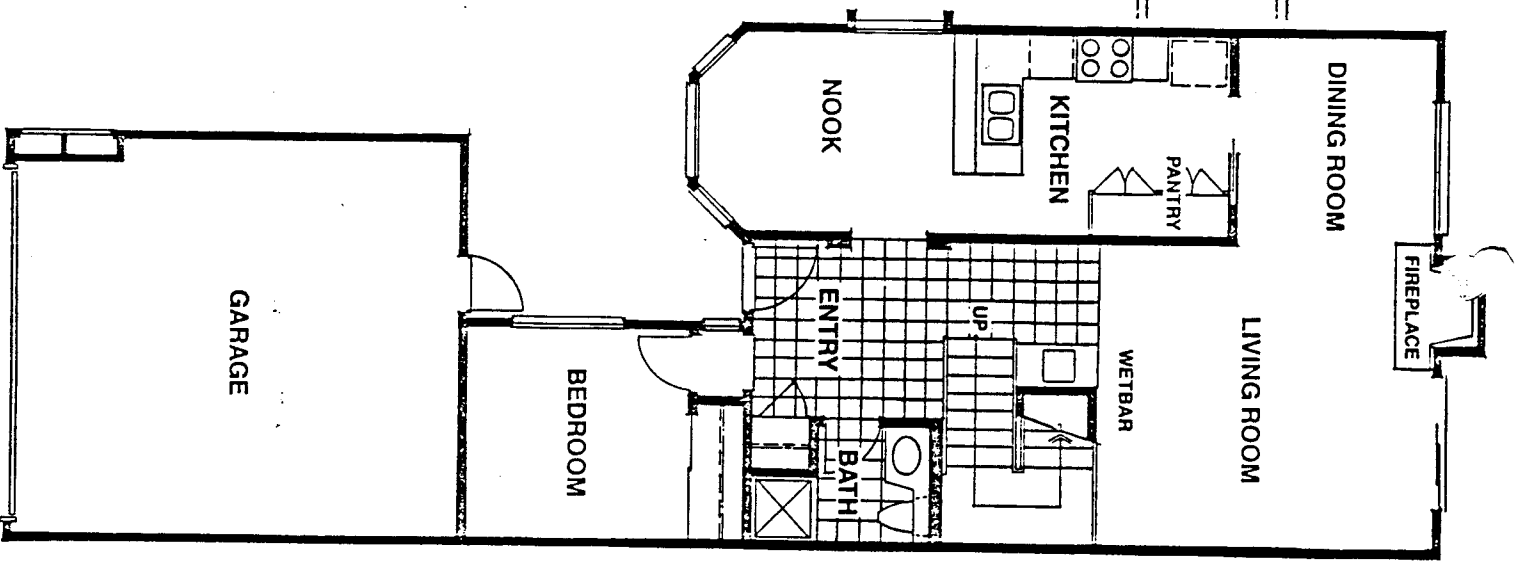


# Le Loure PLAN 1880

The moment you enter this spacious home, you instinctively know you are about to have a very special experience. The tiled entryway with a wet bar on the side, invites you to enter the spectacular living room with its massive fireplace at one end and the full sized formal dining room immediately adjacent. A step-saving kitchen gives way to a huge breakfast nook...more than adequate for handling early morning and late evening family get-togethers. And, thoughtfully tucked away by itself, also at ground level, a third bedroom. Upstairs are two complete master suites, each with abundant closet space and, of course, their own baths. You will appreciate the genius, too, of placing the laundry area on this second level...away from party gatherings and just steps away from hamper, dressers and closets.

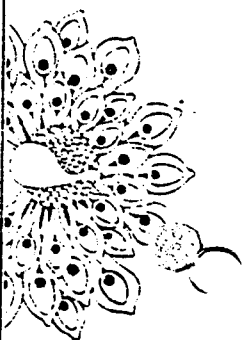
This is a residence of true distinction, a source of pride for those fortunate enough to be able to call it home.

Another Community of Timeless Quality  
by Dale Poe Development Corp.



TRAC T # 812 - Phase 2

AG 96

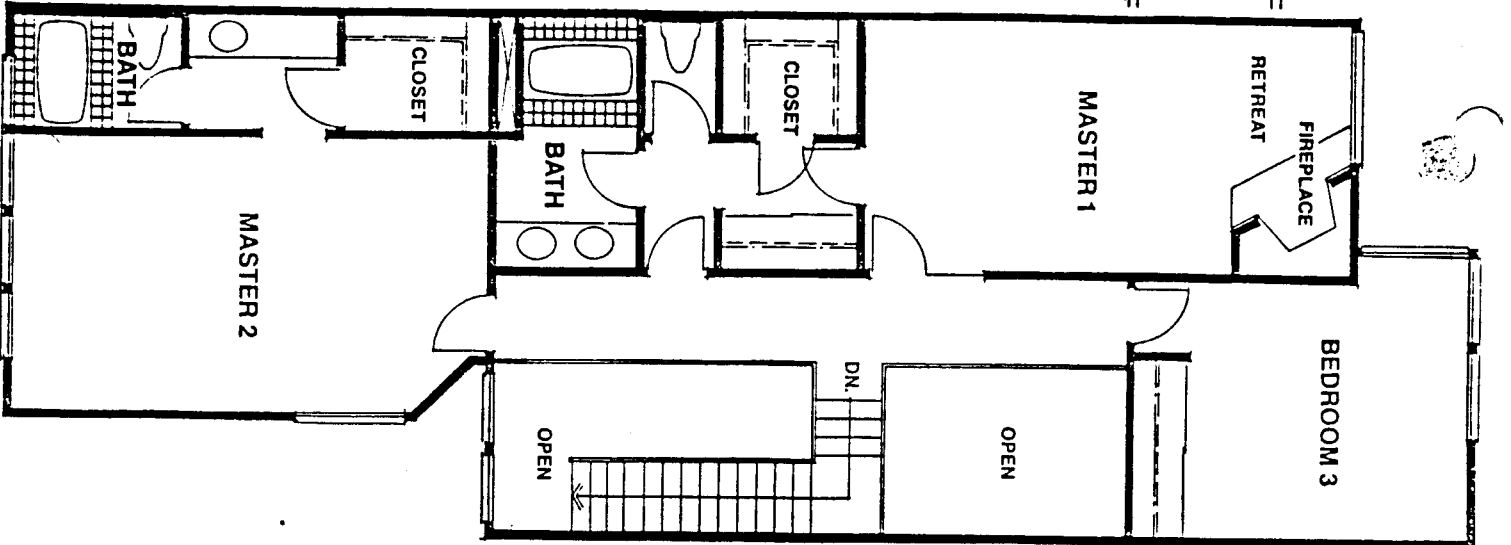
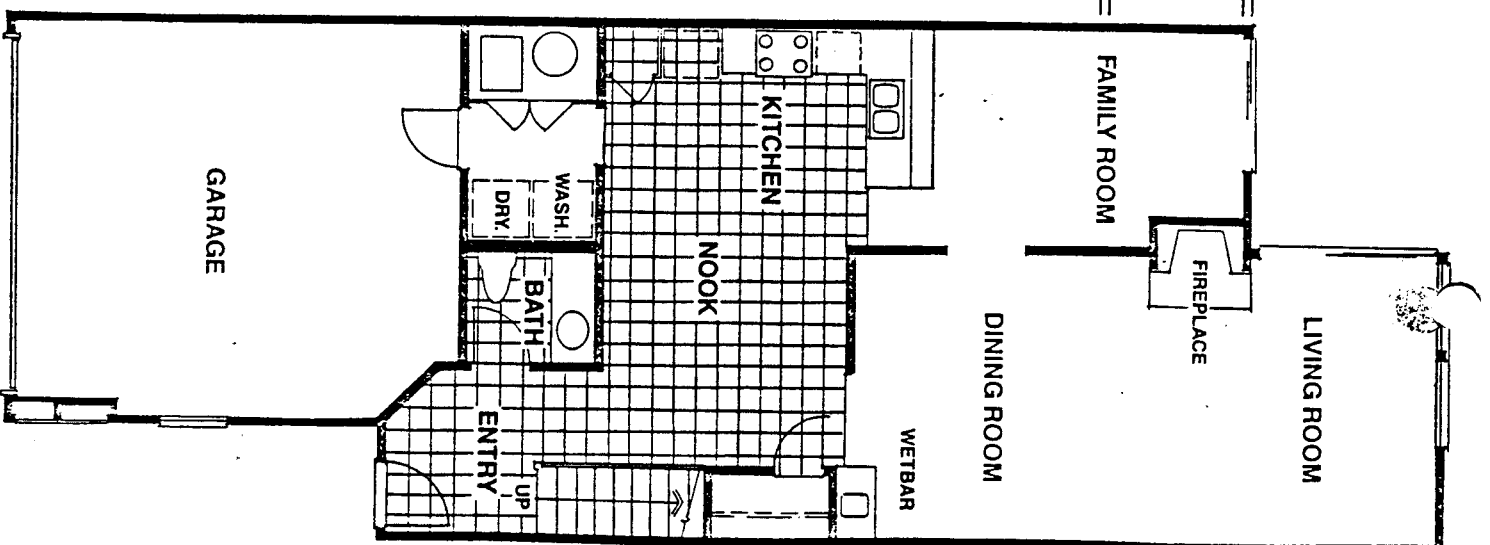


# Le Chateau PLAN 2178

The full grandeur and elegance of country French living strikes you as you enter our largest residence. The open entryway stretches to the very roof and leads almost immediately to a generous atrium with a wet bar to one side. There is a massive kitchen-dining nook combination that calls to mind the pastoral lifestyle suggested in so many places in this home. There is a large living room and separate dining room and an unusually large family room immediately adjacent.

The second floor is dominated by two magnificent master suites, one with a cozy sitting area and its own fireplace; the other featuring a luxurious master bath—walk-in closet combination that was designed with the utmost convenience in mind. There is also a sizeable third bedroom for larger families or for the accommodation of overnight guests.

This is a truly magnificent home, distinctive in every respect.



TRACET #812 - phase 2

AG 9 I