

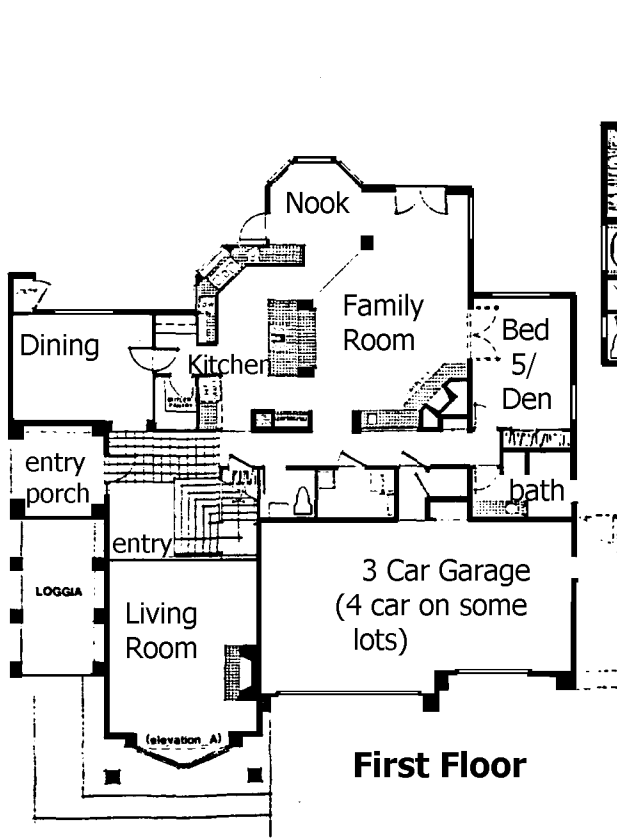
Colonnade  
Plan - 3

*Majorca*

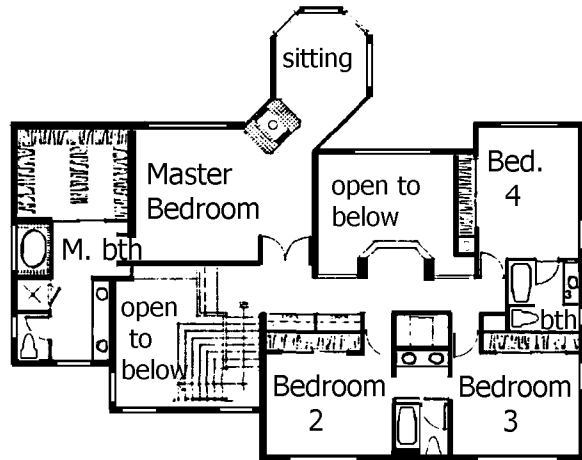
# Marquina

Marquina Plan 142 has five bedrooms, four and a half bathrooms, dining room, family room with wet bar and breakfast room.

Marquina is a beautiful, elegant marble displaying a vivid black background contrasted by stark white markings.



**First Floor**



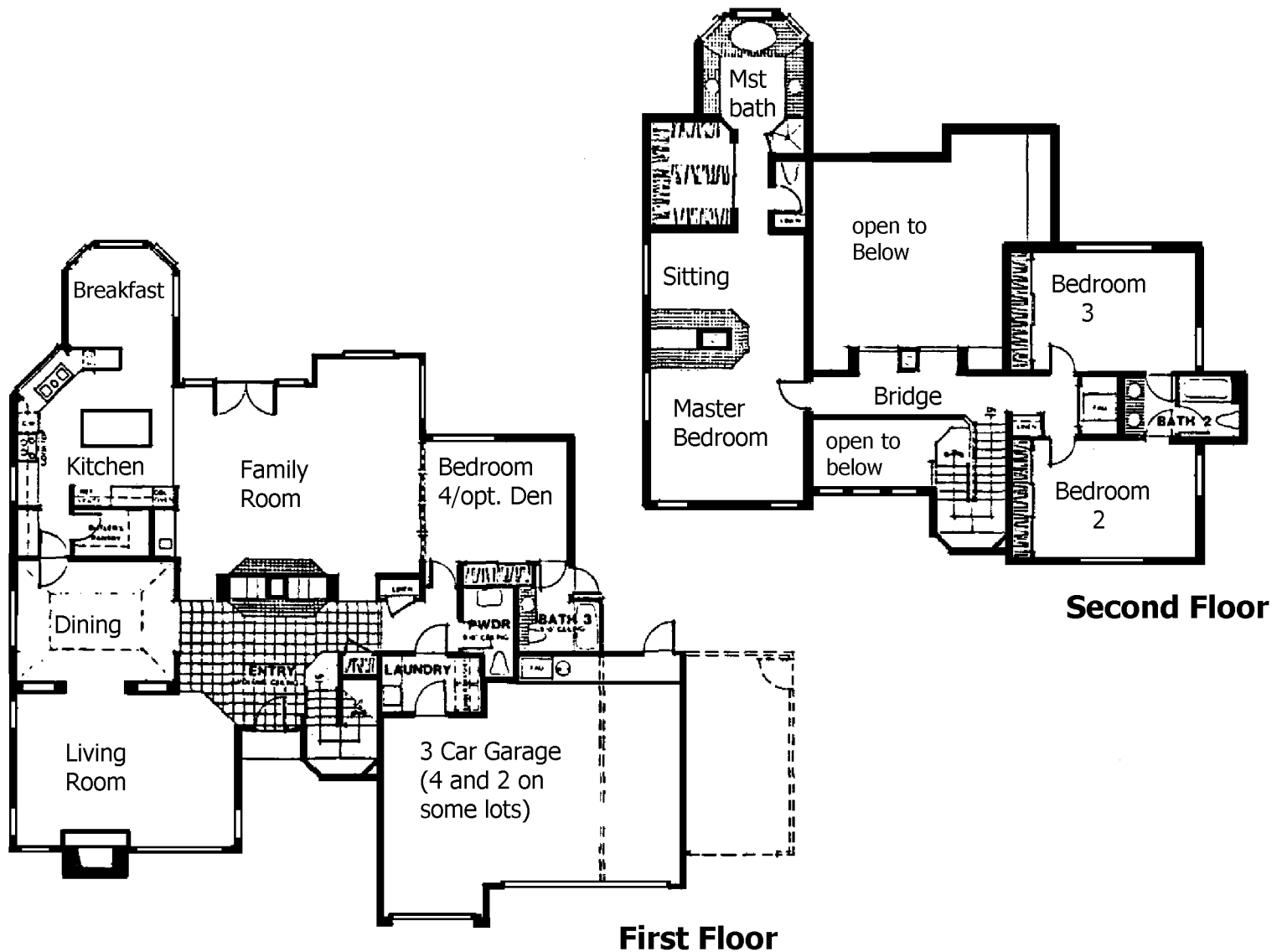
**Second Floor**



# Carrara

Carrara Plan 141 has four bedrooms, three and a half bathrooms, dining room, family room with wet bar and breakfast room.

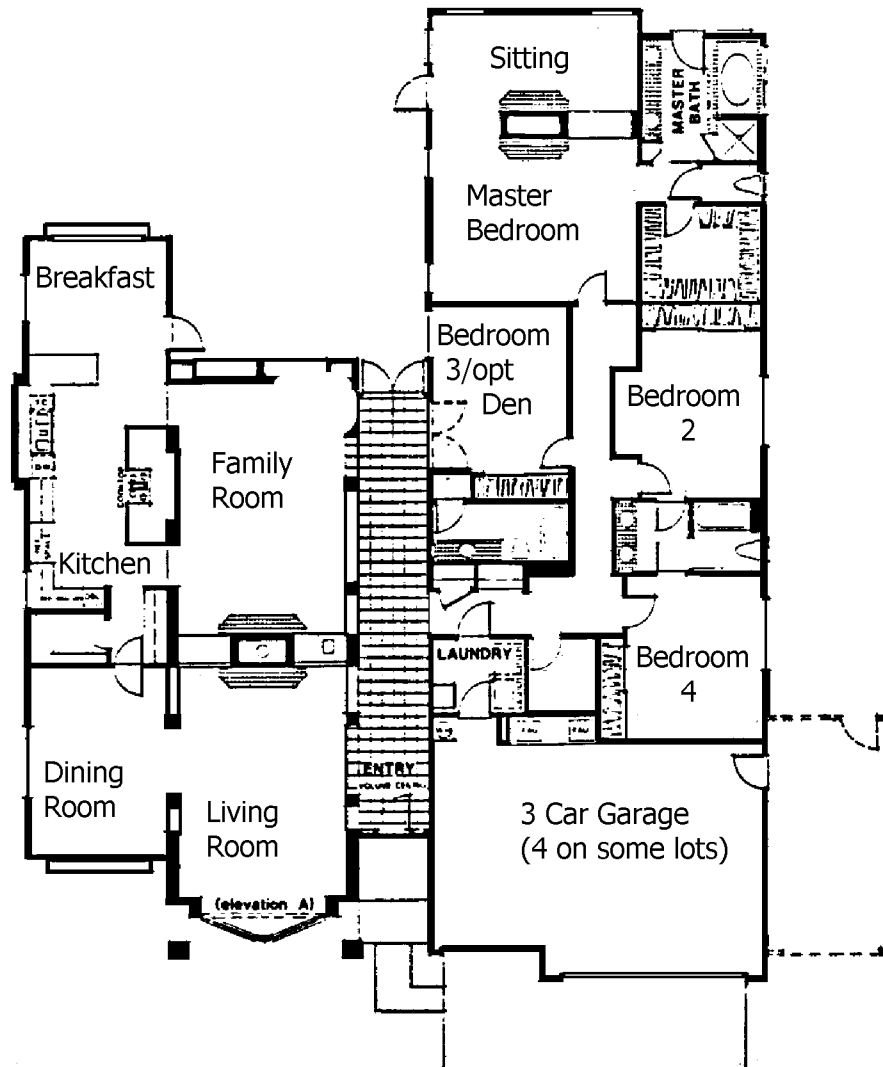
Carrara is a stunning aristocratic white marble usually found with warm gray veining.





# Breccia

Breccia Plan 140 has four bedrooms, three and a half bathrooms, dining room, family room with wet bar and breakfast room. Breccia is a rich classic marble often seen in shades of warm brown/terra cotta with creamy white accents.



A.

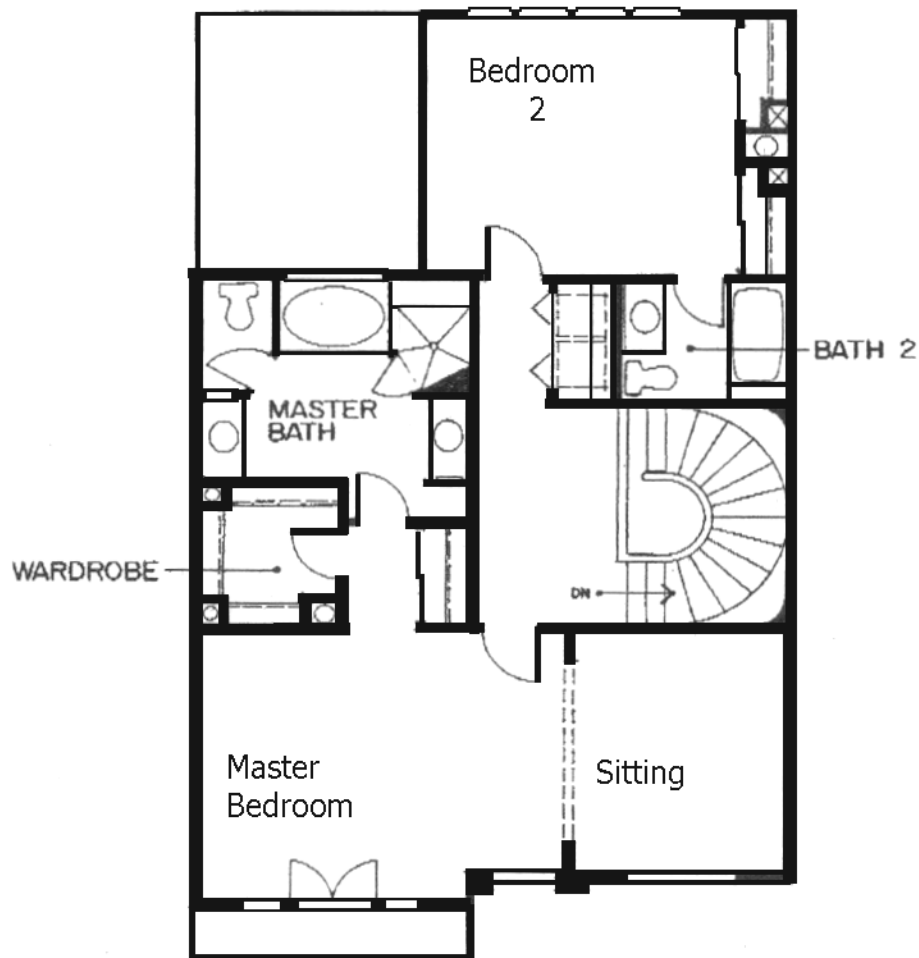


B.

BRIGHTON (B)

OPTION A

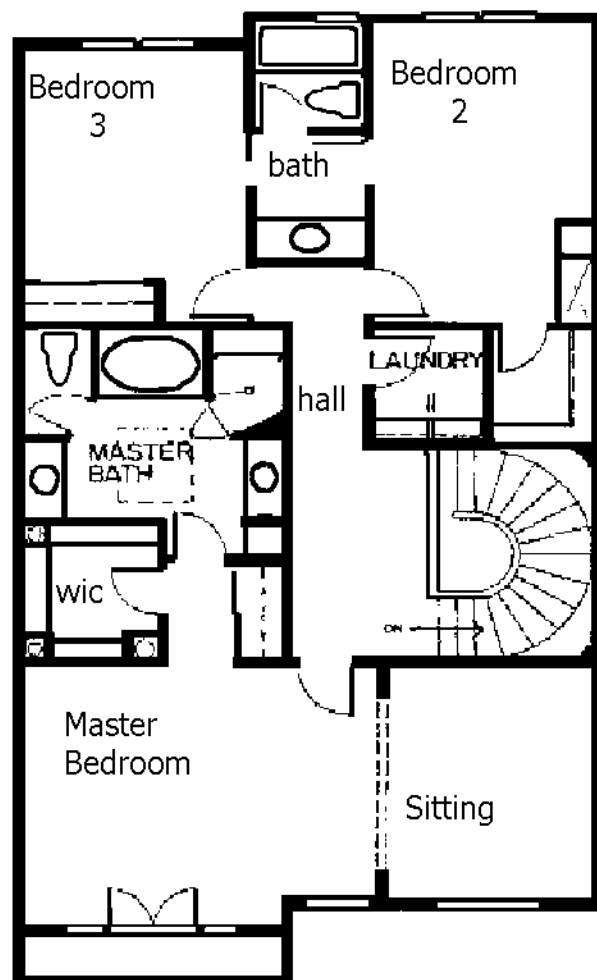
2,341 square feet



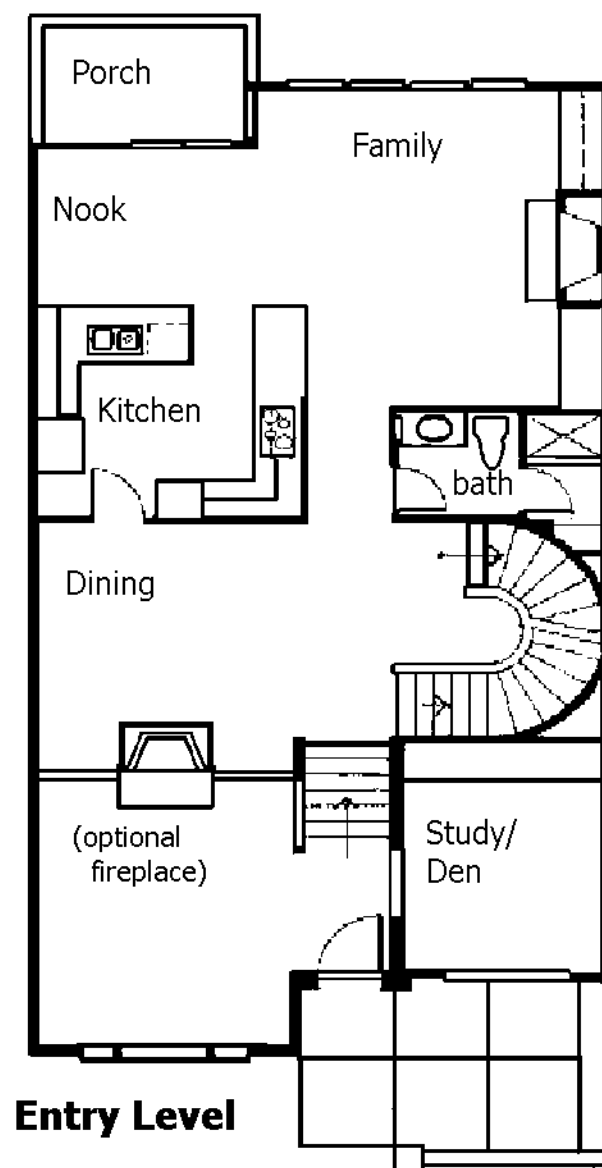
**Second Level (alt)**

## BRIGHTON (B)

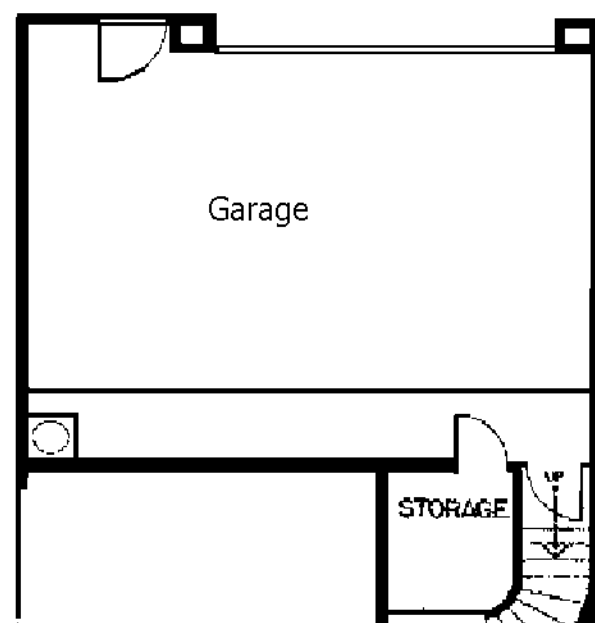
*3 bedrooms, 3 baths, study/den,  
2,412 square feet*

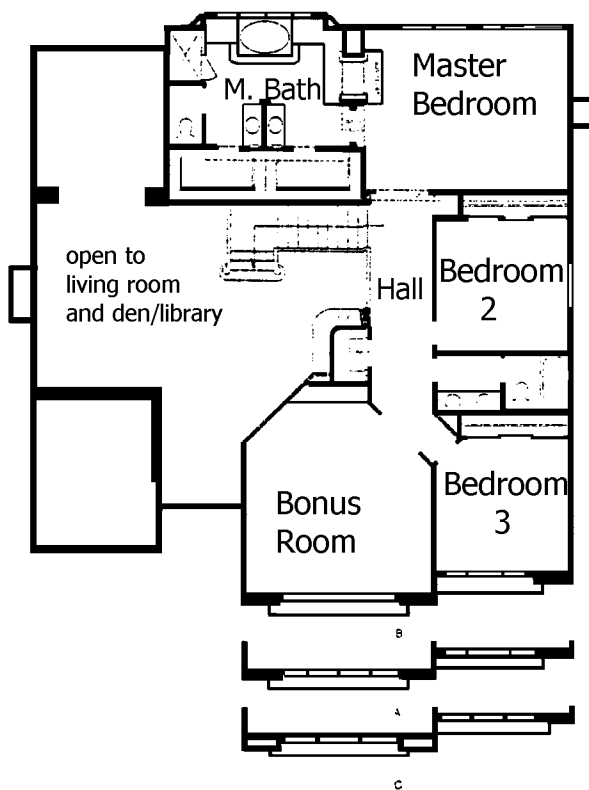
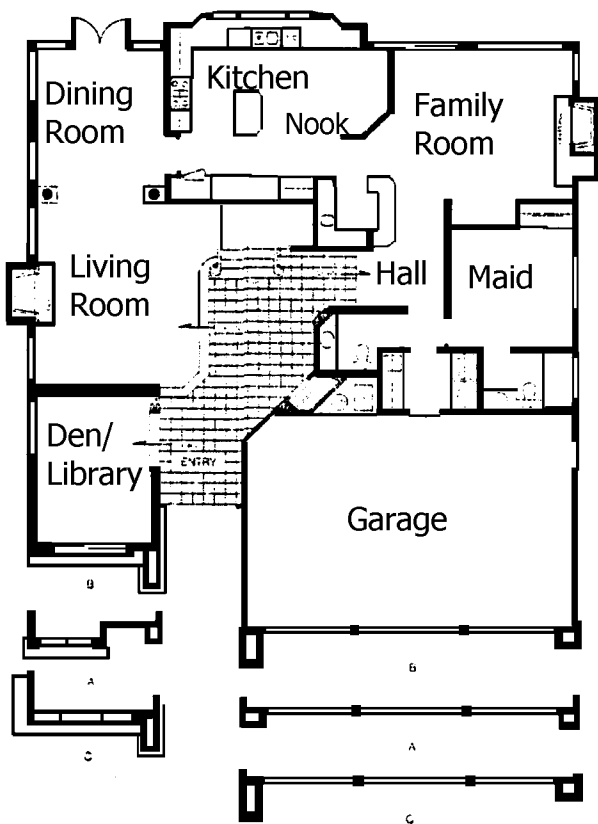


**Second Level**



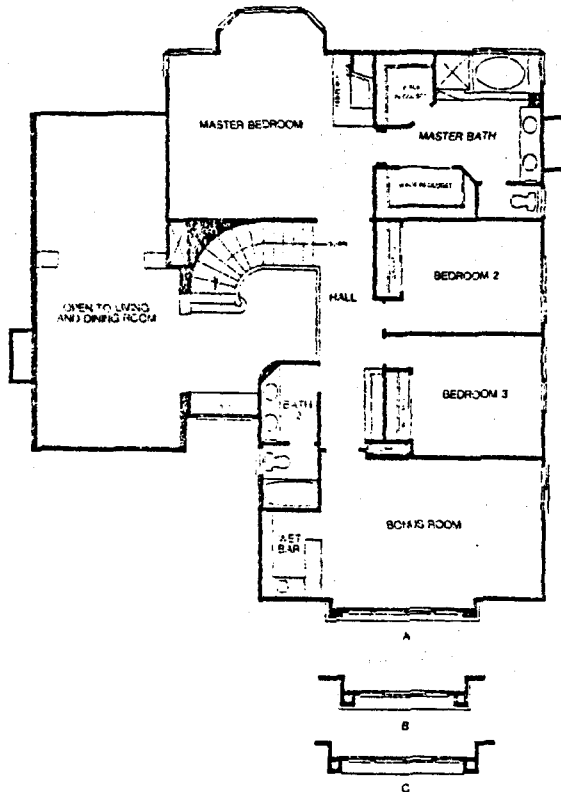
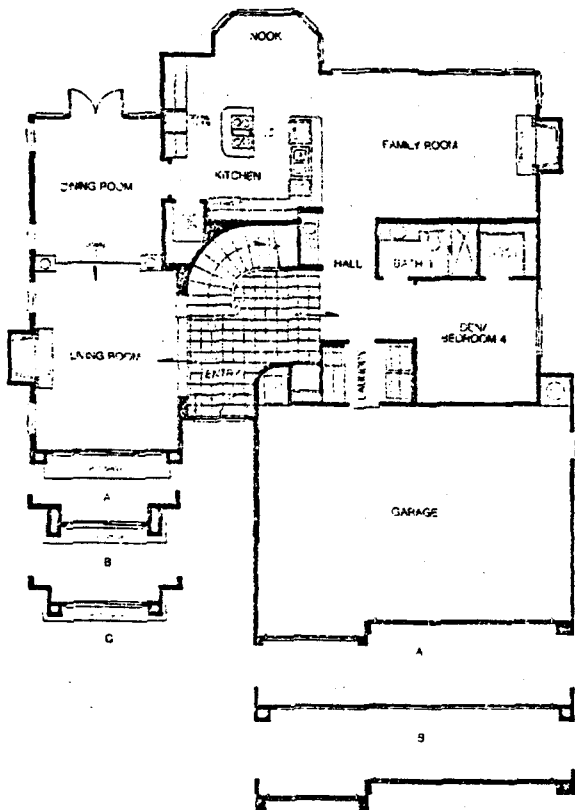
**Entry Level**





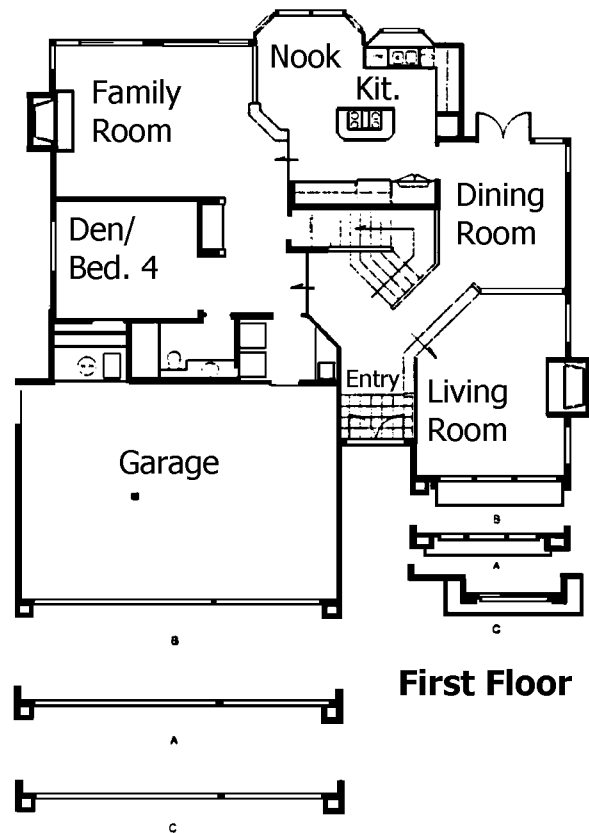
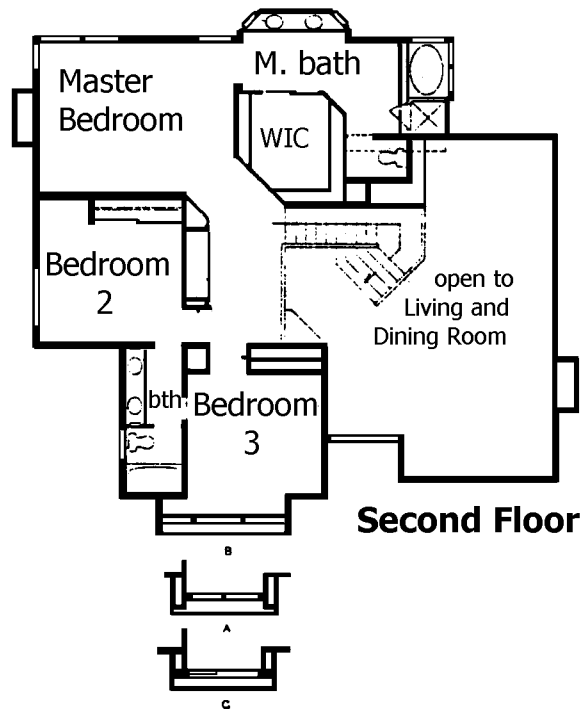
Colonnade Homes

Monaco



*Necca*





*Colonnade*  
*Plan 1*

*Mantua*