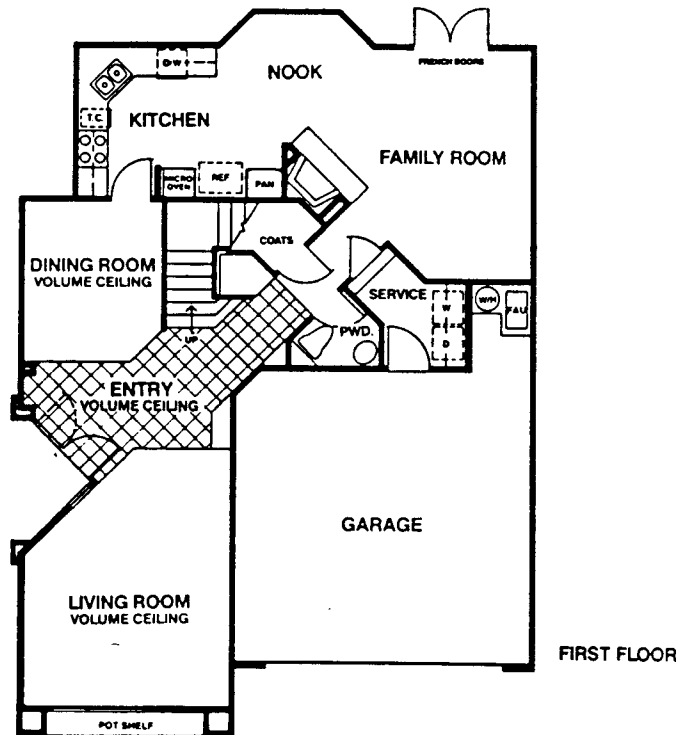


PLAN TWO

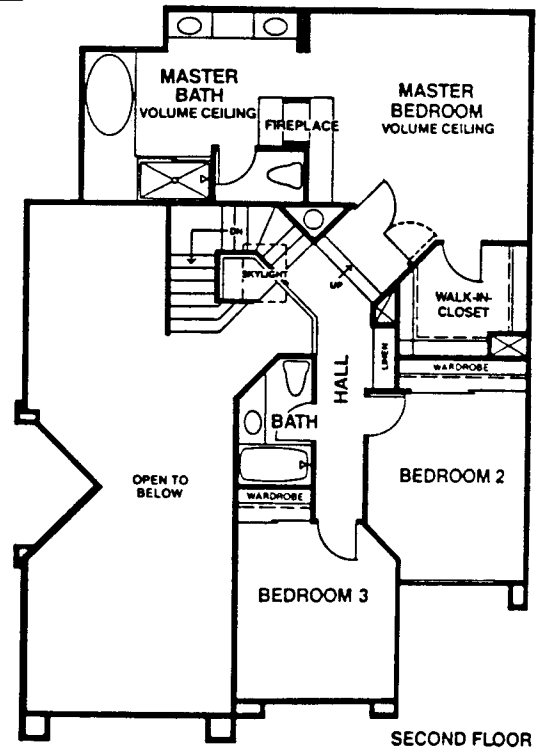


3 bedrooms, 2 1/2 baths
2,024 square feet

The use of volume ceilings in the entry, dining room, living and master bedroom impart a sense of expansiveness throughout this house. The bedrooms are all located on the second floor to afford the maximum amount of privacy. The skylight above the dramatic curved staircase is an attractive feature. The staircase leads to the unique step-up double door entry to the master suite, which features a wood-burning fireplace, master bath and walk-in closet. Another fireplace in the family room and a bright breakfast nook are two additional features of this home.



*In an effort to continuously improve the product, the builder reserves the right to alter, change or modify floorplans, materials and specifications without notice. Square footage is approximate.



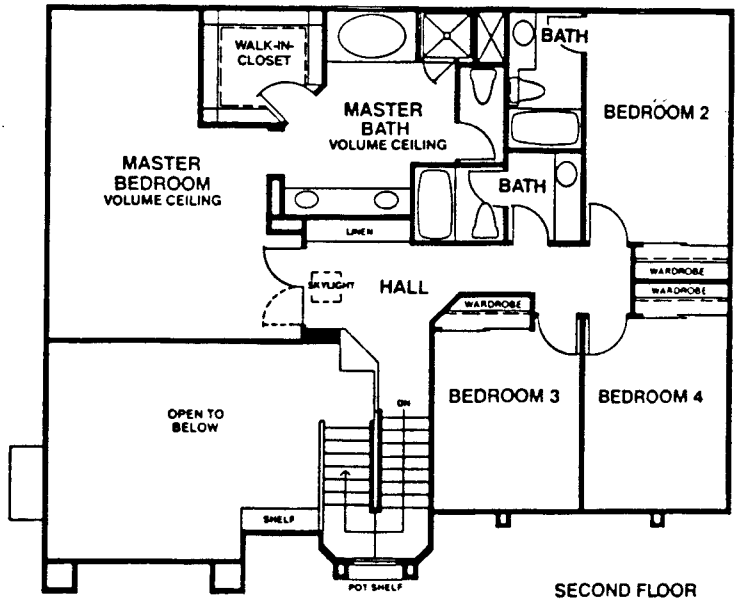
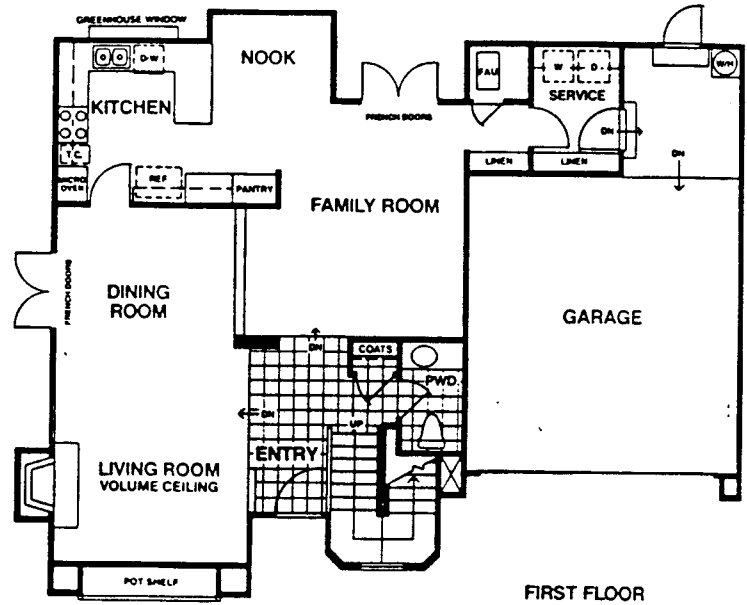
PLAN FOUR



4 bedrooms, 3 1/2 baths
2,406 square feet

Certain to become a focal point for the family is the combination of nook and family room, both of which are adjacent to the gourmet kitchen. The dining room is an impressive attraction for entertaining guests. The living room features a wood-burning fireplace and a wall-length pot shelf as well as a dramatic volume ceiling. The master suite is almost one-quarter of the upstairs area. It offers a double-door entry bathed in light from the overhead skylight, plus walk-in closet and master bath. The other three bedrooms are also located upstairs.

*In an effort to continuously improve the product, the builder reserves the right to alter, change or modify floorplans, materials and specifications without notice. Square footage is approximate.

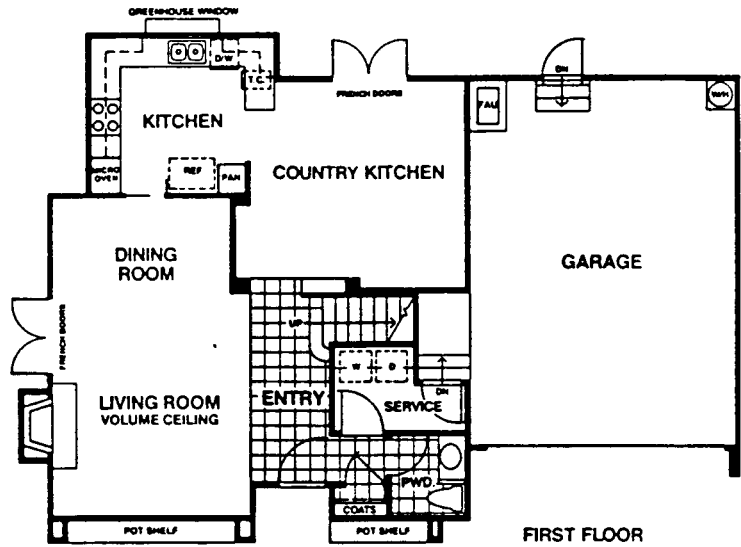


PLAN THREE



or 4 bedrooms, 2 1/2 baths
1,045 square feet

The large entry leads to the dramatic living room, which features a wood-burning fireplace and nearly two full walls of windows. A fully equipped gourmet kitchen overlooks the "country kitchen," which may serve as either a breakfast area or a family dining room. Upstairs, the master suite offers a large master bath and walk-in closet. One of the two additional bedrooms has a dramatic volume ceiling, while the comfortable den can become an optional fourth bedroom. The skylight over the hallway is an attractive touch.



*In an effort to continuously improve the product, the
builder reserves the right to alter, change or modify
plans, materials and specifications without notice.
Square footage is approximate.

